



KITCHEN CABINET

The one stop service for all your housing project needs




The one stop service for all your housing project needs

 **Add1:** No. 7 Xiebian Liangbian Industrial Zone, Dali Town, Nanhai District, Foshan City, Guangdong Province, China

 **Add2:** Guangmei Highway Dasen Industrial Park, Huzhen, Boluo County, Huizhou City, Guangdong Province, China

 **Email:** market@williamarchi.com Whatsapp: +86 13088859386

 **Tel:** 0086 0755-23696342

 **Web:** williamarchi.com



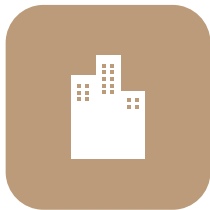


ABOUT US

WILLIAMARCHI LIMITED

COMPANY PROFILE

WilliamArchi is a company engaged in the research and development, manufacturing and sales of cabinets products. Relying on production base in Foshan and a strong team of engineers and designers, WilliamArchi specializes in providing customers with Kitchen cabinets, cabinets panel and provide cabinets hardware accessories and other high-quality products. At present, the construction projects we serve mainly include municipal construction projects, commercial construction projects, and residential construction projects.



1500+m²
office



30000m²
factory



100+
team



100+
countries

FACTORY PROFILE

WilliamArchi provides customized cabinets products including lacquer kitchen cabinets, wood veneer kitchen cabinets, melamine finished kitchen cabinets, UV kitchen cabinets, Wooden Kitchen cabinets, PET kitchen cabinets, HPL kitchen cabinets, PVC kitchen cabinets, Stainless steel kitchen cabinets and aluminum kitchen cabinets etc., Over the years, WilliamArchi has been firmly practicing the business philosophy of "winning the trust of customers with professional services and high-quality products", and has become a leader in the cabinets industry.



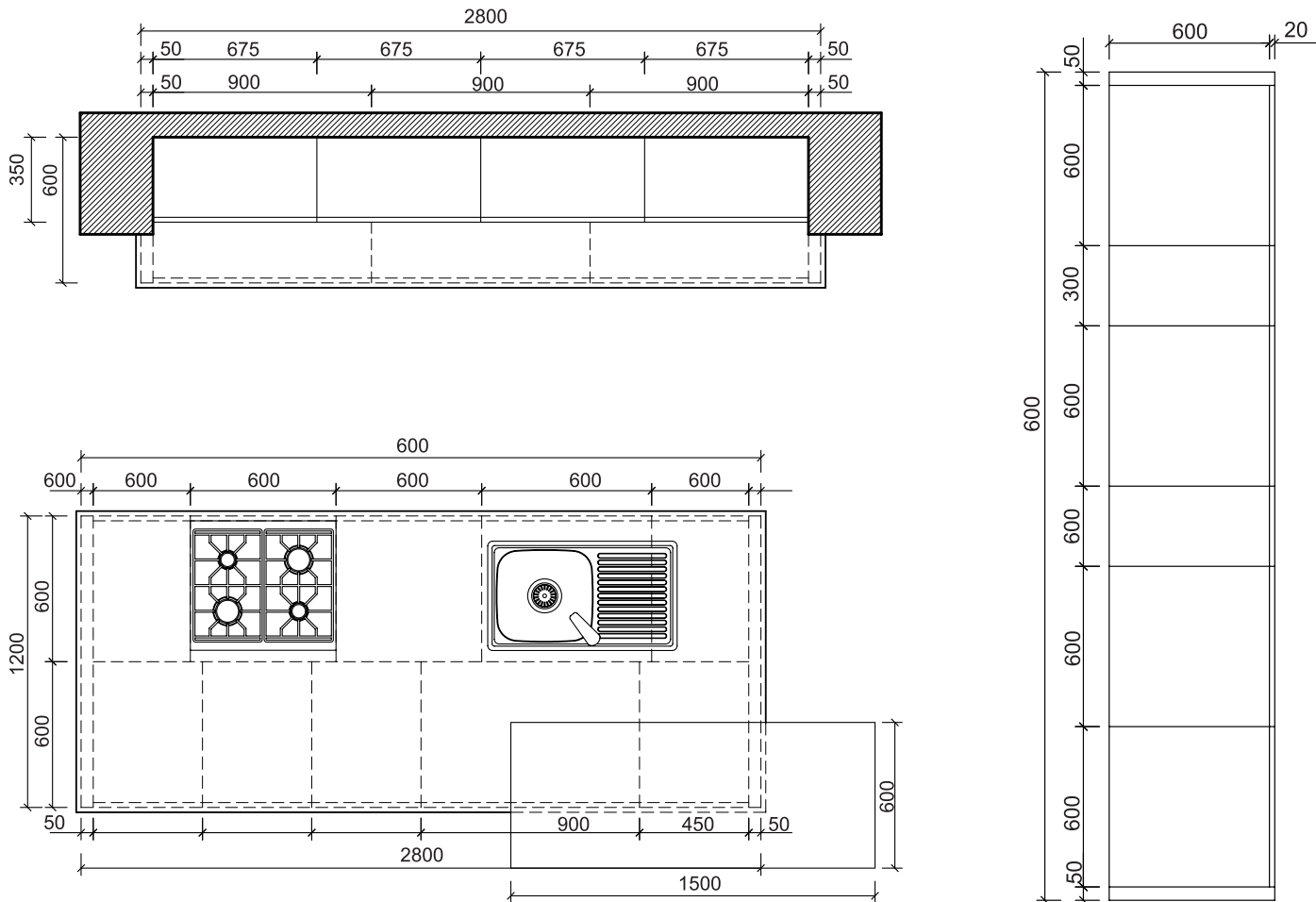
CONTENTS

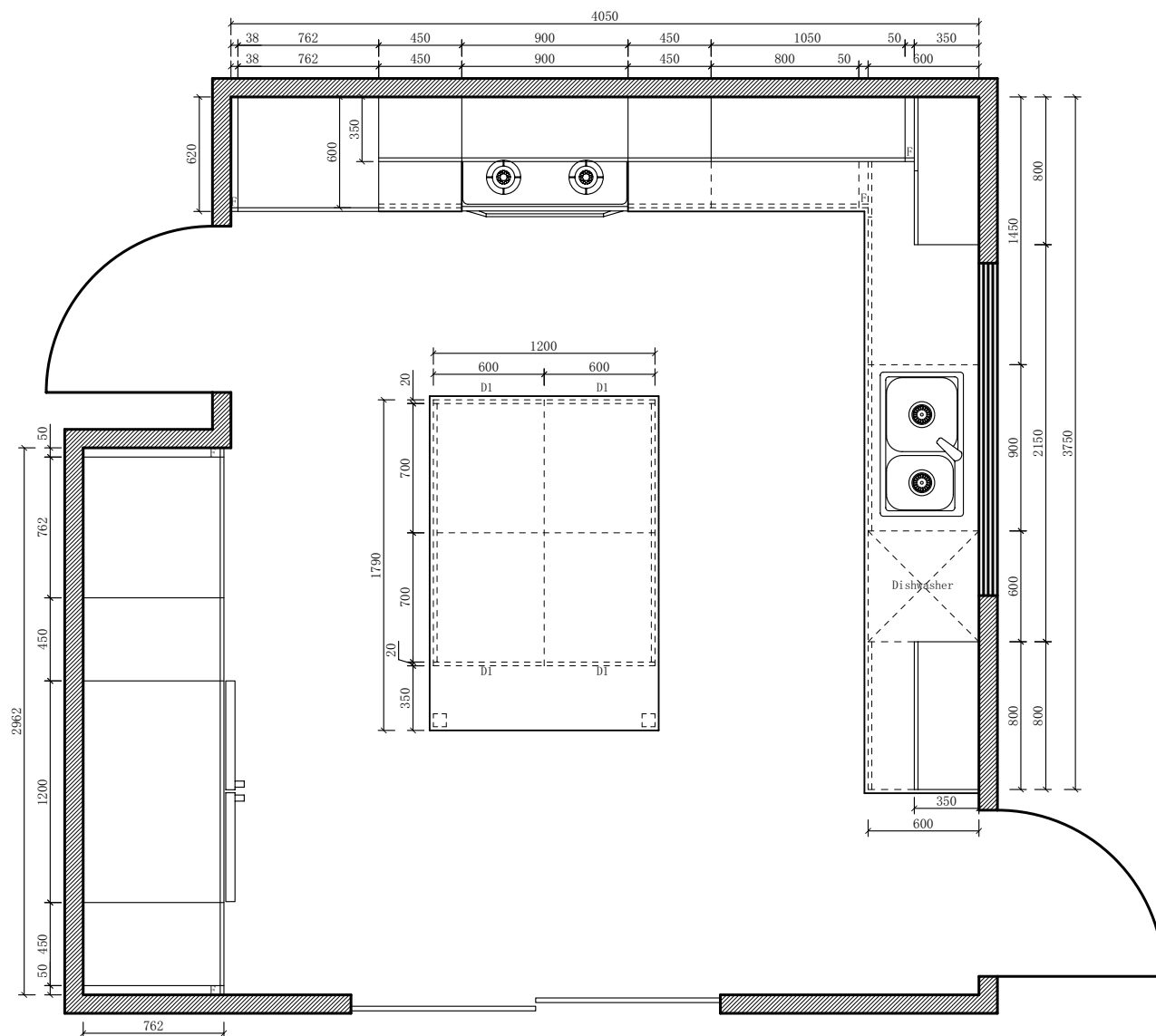
SOLID WOOD KITCHEN CABINET	05
• American style unit cabinet	15
LACQUER FINISH KITCHEN CABINETT	29
LAMINATED FINISH KITCHEN CABINETT	51
PVC KITCHEN CABINETT	59
PET KITCHEN CABINETT	69
STAINLESS STEEL KITCHEN CABINETT	77
ACCESSORIES	87





With flexible design and top quality construction, the designers' various collections from Prima Cabinetry make it easy for those who desire to project and personalize their living space and to make it exclusive, luxurious and yet very affordabte.





With flexible design and top quality construction, the designers' various collections from Prima Cabinetry make it easy for those who desire to project and personalize their living space and to make it exclusive, luxurious and yet very affordable.





SOLID WOOD KITCHEN CABINET

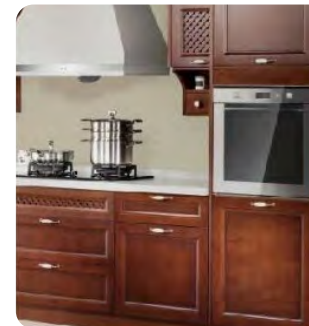


Celebrating nature's artistry through grain patterns that tell unique stories, these heirloom-quality cabinets age with grace. Hand-fitted with artisan-crafted hardware, they transform kitchens into warm, organic sanctuaries—where timeless beauty meets generational endurance.



SOLID WOOD KITCHEN CABINET

Simple and smooth lines, like the quietly flowing waters of the Danube, strike a beautiful rhythm. The elegant and natural solid wood grains, along with the dense and unpretentious texture, allow us to better savor this peace and beauty. The linear design, combined with tall electrical cabinets, makes excellent use of storage space while maintaining the overall aesthetic appeal.



COMBINATION ELECTRICAL
CABINET



GRID DOOR PANEL



FENCE-STYLE DISH CABINET



SOLID WOOD KITCHEN CABINET

Crafted from high-quality maple wood sourced from Canada, with an overall open structure and uniquely crafted retro designs, it makes kitchen life more pleasant and relaxed.



MULTIFUNCTIONAL ISLAND
COUNTER



CHARACTERISTIC WINE
CABINET



COMBINATION ELECTRICAL
CABINET



NORTH AMERICAN CHERRY WOOD
DOOR



E1-GRADE SOLID WOOD CABINET
BODY



MULTIFUNCTIONAL STORAGE
CABINET



CREATIVE OPEN CABINET



FULL GRID DOOR



AMERICAN RED OAK



E1-GRADE SOLID WOOD CABINET
BODY



SPECIALLY DESIGNED CONDIMENT
STORAGE SPACE



EXQUISITE WINE RACK

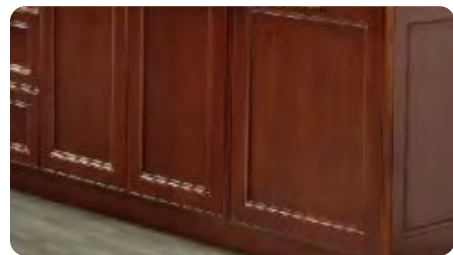




NORTH AMERICAN CHERRY
WOOD DOOR

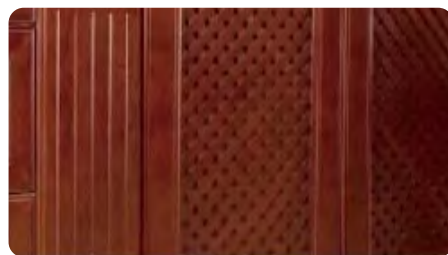
E1-GRADE SOLID WOOD
CABINET BODY

MULTIFUNCTIONAL STORAGE
CABINET



CREATIVE OPEN CABINET

FULL GRID DOOR



SOUTH AMERICAN CHERRY
WOOD

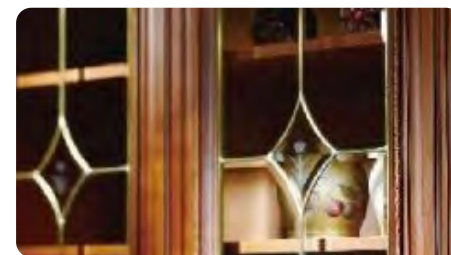
BUILT-IN DESIGN

U-SHAPED ISLAND COUNTER
DESIGN



CLASSIC-STYLE GLASS DOOR

EUROPEAN CLASSICAL HANDLE





01



02



03



04



05



06



07



08



09



10



11



12



AMERICAN STYLE UNIT CABINET

Celebrating heritage craftsmanship through warm oak grains that beckon touch, these configurable units marry timeless durability with artisanal details. Paired with solid-brass accents, they transform kitchens into legacy spaces—where classic richness meets generation-spanning resilience.

DOOR COLLECTION

Sunlit woods glow with honey-maple warmth; misty neutrals whisper coastal calm; deep midnight blues ground spaces in heritage richness—each hue crafting effortless elegance for your culinary canvas.



White Shaker



Blue Shaker



Grey Silver



Charcoal Black



Heirloom Brown

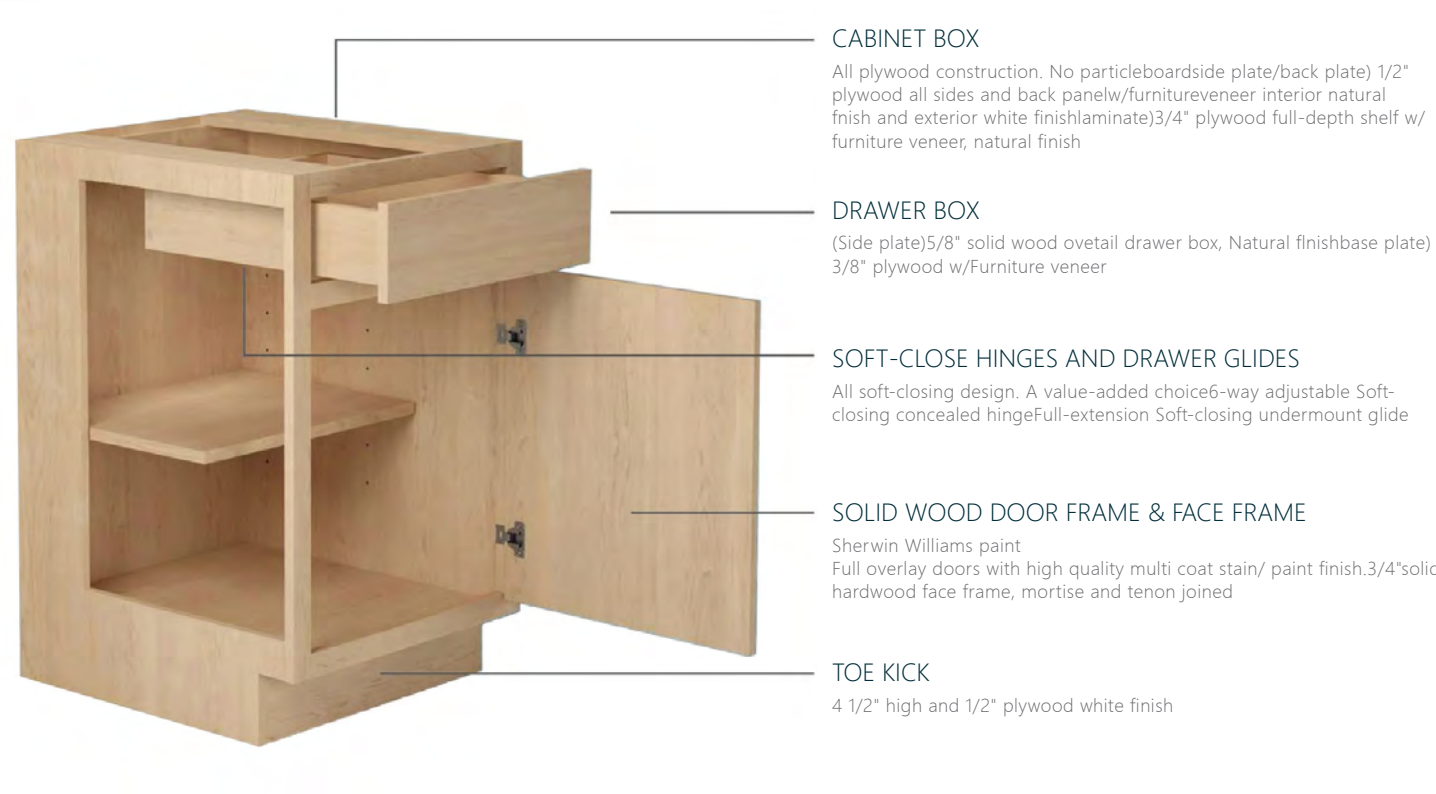


barley-oak





CABINET CONSTRUCTION





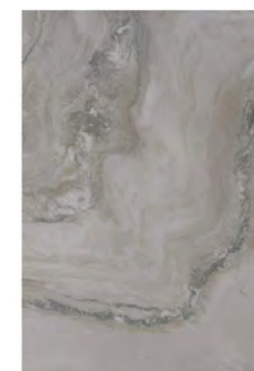
KINGSTON
White Shaker



KINGSTON
Blue Shaker



ENGINEERED FLOORING
Whitney
48"x7"
Finish:Cermic



STONE PANEL
Calacatta Elegant
126"x 63"
Finish:Polished



KITCHEN FAUCET
N88486-BG
More Color:BN/BK



SQUARE PULL
RgdOh67a-961128|1605
1/4"16 1/2"17 1/2"
Rose Gold



KINGSTON
White Shaker



KINGSTON
Charcoal Black



STONE PANEL
Calacatta Elegant
126"x 63"
Finish:Polished



ENGINEERED FLOORING
Whitney
48"X 7"
Finish:Cermic



MOSAIC TILES
Montana Bianco
Thickness: 10 mm



KITCHEN FAUCET
N88486-BG
More Color:BN/BK



KITCHEN FAUCET
N88486-BG
More Color:BN/BK



DECOR PULL
RGD0H67A-9611281160
5 1/4 16 1/2"17 1/2Oil
Rubbed Bronze



SQUARE DECOR KNOB
N88486-BG
More Color:BN/BK

PREMIUM QUALITY
EFFORTLESS CONVENIENCE



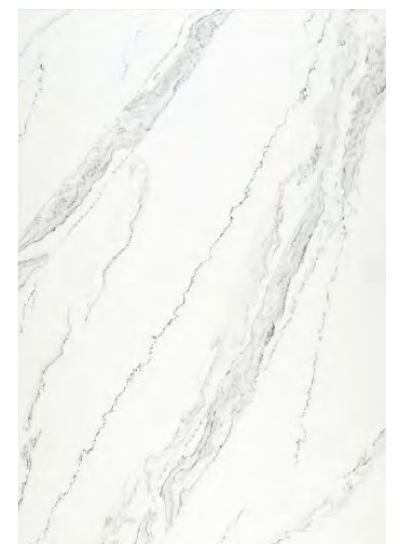
KINGSTON
Blue Shaker



KINGSTON
White Shaker



ENGINEERED FLOORING
Whitney
48"X 7"
Finish:Cermic



STONE PANEL
Calacatta Elegant
126" x 63"
Finish:Polished



SOLID WOOD KITCHEN CABINET

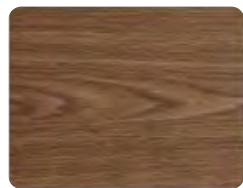
The stylish and minimalist American style, paired with the solemn and calm dark gray tones and the island counter design with glass door panels, presents an overall light luxury and noble look full of modernity.

PACIFIC MAPLE

The texture is clear and delicate, with a natural feel. It has moderate hardness, is moisture-resistant and anti-deformation.



American Pacific red maple



Clear texture



Natural texture



Eco-friendly



Moisture-resistant and anti-deformation



Superior nail-holding power

SUPERB STORAGE FUNCTION



Built-in appliances



Concealed storage



Layered and zoned storage

LACQUER FINISH KITCHEN CABINET



Contemporary and contracted wind series ambry, pay attention to the collocation between cool and warm tonal, with concise modelling, perfect detail, build the feeling that gives fashionable avant-garde. Ambry line is decorous and fluent, reflected contemporary life fast rhythm, but the life breath that is full of spark again.



LACQUER KITCHEN CABINET

The natural softness and agility, along with the combination of elegant wood textures and white door panels, create a simple, elegant and fresh atmosphere, offering people a leisurely and refined kitchen life experience.



ECO-FRIENDLY AND STYLISH
MAPLE BIRCH



U-SHAPED OVERALL DESIGN



REASONABLE SPACE DIVISION
DESIGN



LACQUER KITCHEN CABINET

The straight-line arrangement of tall cabinets, exquisite island counter, and scientific layout planning—every detail handled with care—create a sophisticated kitchen space. This elevates the kitchen into a social venue where all relatives and friends can enjoy relaxed and joyful gathering moments.



ITALIAN LIGHT LUXURY STYLE



CONCEALED HANDLE



HUMANIZED FUNCTION







Busy work shouldn't take over your life.
The pursuit of beautiful, warm, pleasant things is the essence of human nature.
Smooth lines, excellent proportion, composed wood characteristics, to be decorated with modern materials.
Both design sense and comfort, exudes Italian elegant atmosphere.
Get back to your roots, enjoy life, enjoy home, enjoy love.













Below monochromatic setting, local undertake the ambry of the ornament of wood grain or natural wood grain, wood grain color regression. The frame and door panels are hand-carved, painted and polished by hand to reflect the retro style.





LAMINATED FINISH KITCHEN CABINET



LAMINATED FINISH KITCHEN CABINET

As attractive as it is versatile, the bar area is an open-island style cabinet of independence in which sink and spacious island provide a commodious room for cooking.

- Carcase: 16mm thick moisture resistant particle board with melamine finish.
- Doors: 18mm MDF with matt gloss lacquer finish/laminated finish.
- Countertop: 20mm quartz stone with 20mm laminated edge.
- Hardware: Blum Soft closing hinges and Metabox drawers.
- Including pull-out basket, rubbish bin, cutlery tray, sink and faucet.
- With kick board (same as door), adjustable feet and handle.





Today's contemporary design trends focus heavily on the depth&color of real wood. With wood grains always attract you. Durable as it has been. Matched with exquisite handle, the kitchen is more like a masterpiece. Timber wood finish kitchen gives you that richness, but with a longer lifespan.

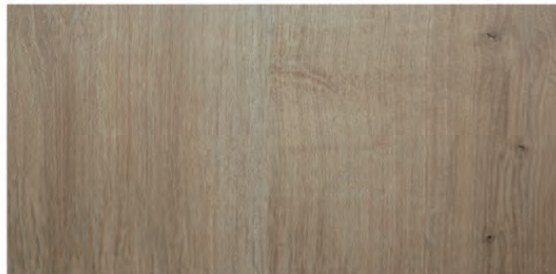




02



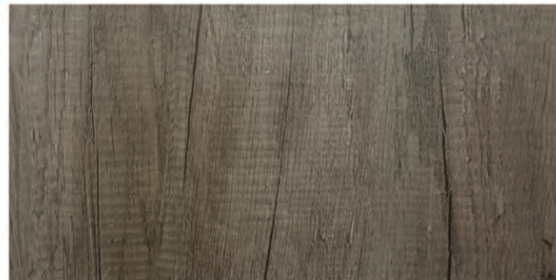
02



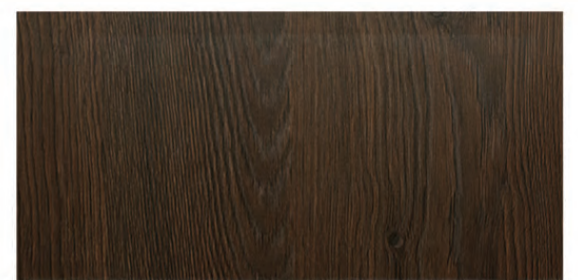
02



02



02



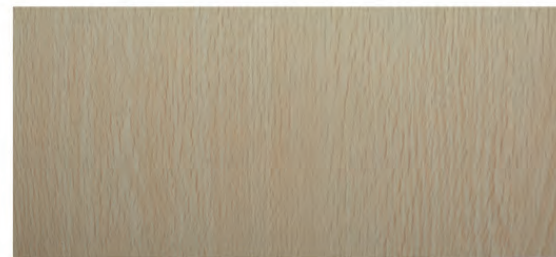
02



02



02



02



02



PVC KITCHEN CABINET

williamarchi

PVC KITCHEN CABINET

Today's contemporary design trends focus heavily on the depth&color of real wood. With wood grains always attract you. Durable as it has been. Matched with exquisite handle, the kitchen is more like a masterpiece. Timber wood finish kitchen gives you that richness, but with a longer lifespan.



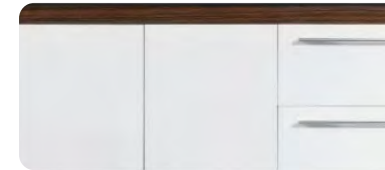




PVC KITCHEN CABINET

The L-shaped spatial layout integrates three major functions: washing, cooking, and food preparation. Coupled with an exquisite bar counter, it perfectly presents the pragmatism of an elegant lifestyle.

REALISTIC WOOD-LIKE TEXTURE



MULTI-LAYER SOLID WOOD CABINET BODY



UNIQUE WALL-MOUNTED CABINET



SMALL BAR COUNTER DESIGN



PVC KITCHEN CABINET

The modern minimalist design style, featuring both tall cabinets and wall-mounted cabinets, ensures symmetry on both sides while increasing storage space.



MILLENNIUM GRID GLASS WALL CABINET



CHARACTERISTIC VACUUM-FORMED DOOR PANEL



STOVE PULL-OUT BASKET



PVC KITCHEN CABINET

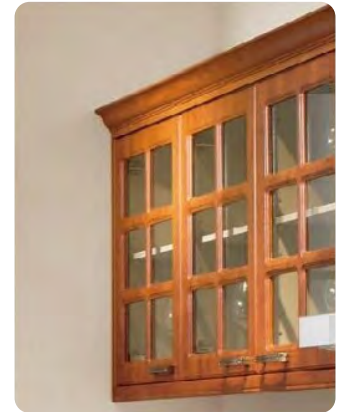
Inheriting the architectural style of ancient Rome, the multi-layered design, combined with the multi-layered door panel treatment, creates a classical Roman charm.



180° CORNER PULL-OUT BASKET



CONDIMENT PULL-OUT BASKET



GLASS DOOR OF WALL CABINET



PVC KITCHEN CABINET

Applying classical aesthetics to modern cabinet design, the combination of deep gray tones and white quartz stone results in an overall look that is rigorous and dignified, achieving a simplicity that is far from simplistic.



ITALIAN MINIMALIST STYLE



L-SHAPED KITCHEN ISLAND DESIGN



WALL CABINET EQUIPPED WITH AN EXQUISITE WINE RACK

PET KITCHEN CABINET

High-definition PET surfaces achieve gem-like radiance without wood's limitations. With anti-fingerprint nanotechnology and reinforced edges, these cabinets merge museum-grade aesthetics with laboratory-grade endurance for perpetually pristine kitchens.





VISUAL PERCEPTION

Proper arrangement creates a better visual experience.

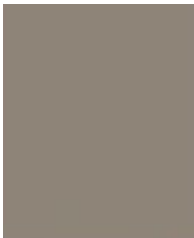
PUR edge banding: Super-strong sealing with 360° all-round waterproof performance.

PUR hot-melt adhesive edge banding technology: Irreversible curing for a more secure edge bond.





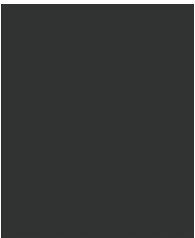
HIGH-GLOSS FINISH



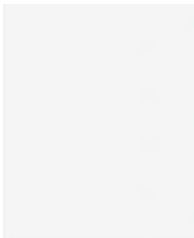
Skin-feel milk tea gray



Fish maw white



Skin-feel noble gray



High-gloss white



High-altitude
clear sky gray



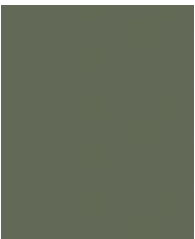
Skin-feel ocean blue



Cherry pink



Skin-feel Kehui
gray



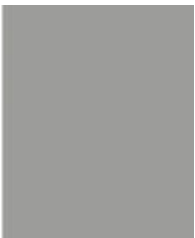
Skin-feel coral green



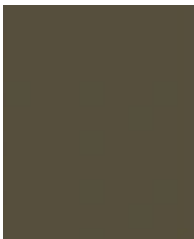
Silver flash khaki



Silver flash cement gray



Skin-feel moonlight
gray



High-gloss milk tea
gray

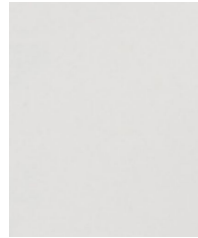


High-gloss ivory white

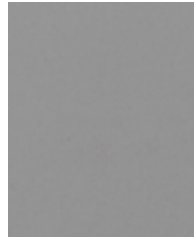


Skin-feel moonlight
white

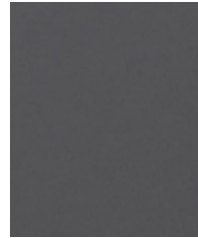
TACTILE FINISH



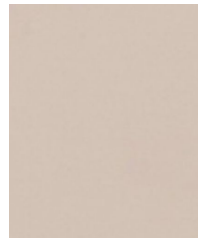
PET skin-feel white



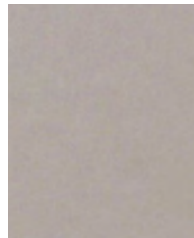
PET skin-feel premium gray



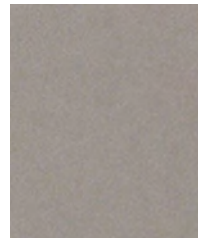
PET skin-feel gentleman gray



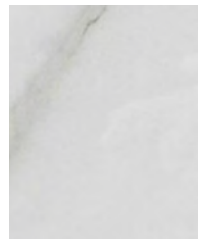
PET skin-feel light khaki



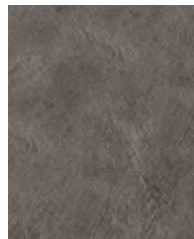
PET skin-feel khaki gray



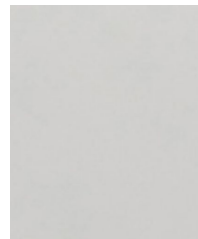
PET skin-feel space gray



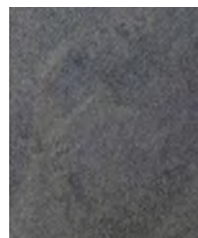
PET high-gloss white stone pattern



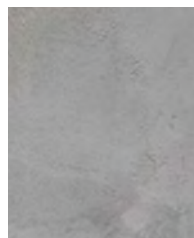
PET high-gloss Phantom dark gray



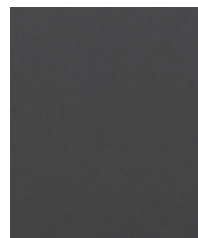
PET high-gloss white



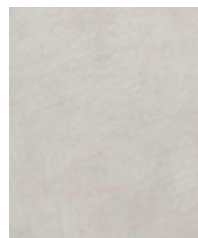
PET high-gloss gray stone pattern



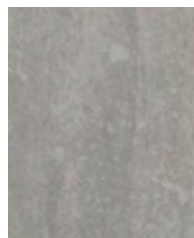
PET high-gloss Phantom light gray



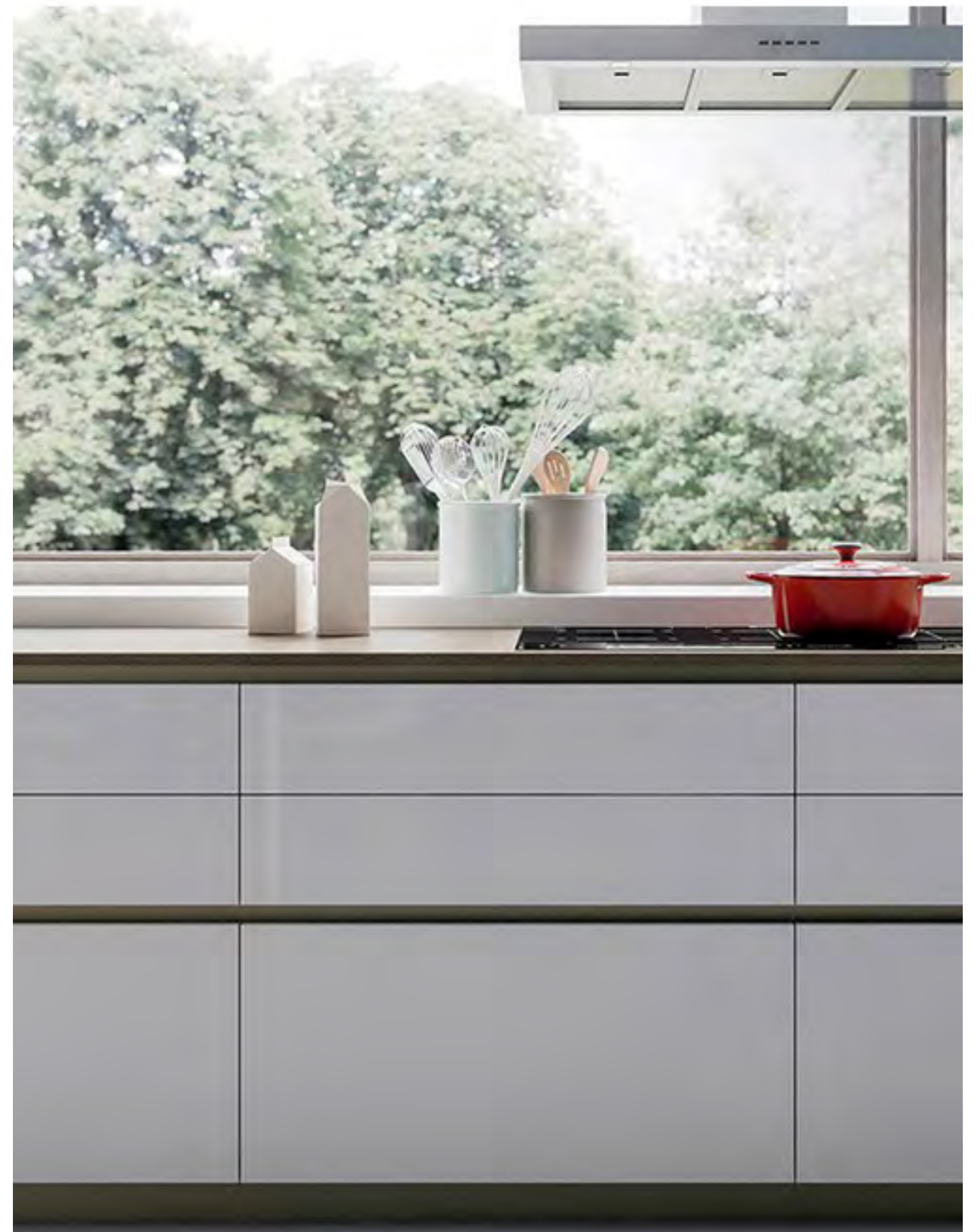
PET high-gloss gentleman gray



PET high-gloss feather white



PET high-gloss cement gray





STAINLESS STEEL KITCHEN CABINET

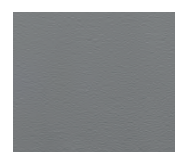
Industrial-chic surfaces gleam with liquid-metal depth, their precision-brushed grains captivating modern sensibilities. Paired with seamless handles, these hygienic fortresses resist corrosion, heat, and wear—delivering timeless sophistication engineered for lifetimes of culinary precision.



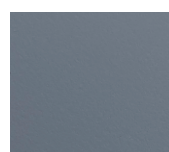




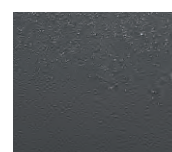




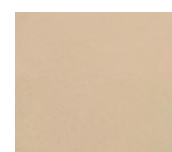
Bru Gray



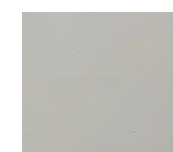
Tina Blue



Gentleman Gray



Skin-touch Beige



Sanded Beige



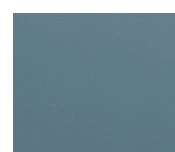
BMW Gray



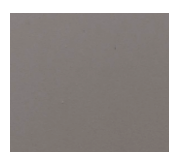
Seaweed Blue



Peacock Blue



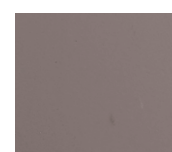
Ned Blue



Moonlight Gray



Light Luxury Gray



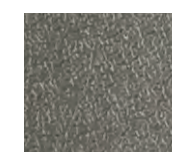
Lotus Pink



Matte White



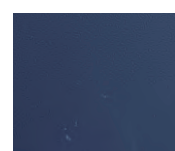
Tobacco Gray



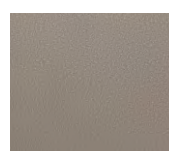
Hemp Gray



Classic White



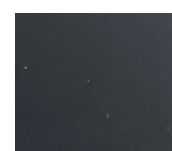
Gray-Blue Fine Sand



Triumph Gold Sand



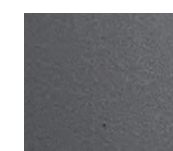
Marina Gray



Skin-feel Jet Black



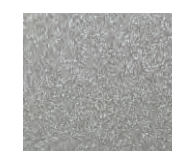
Wood-Grain Steel Gray



Graphite Gray



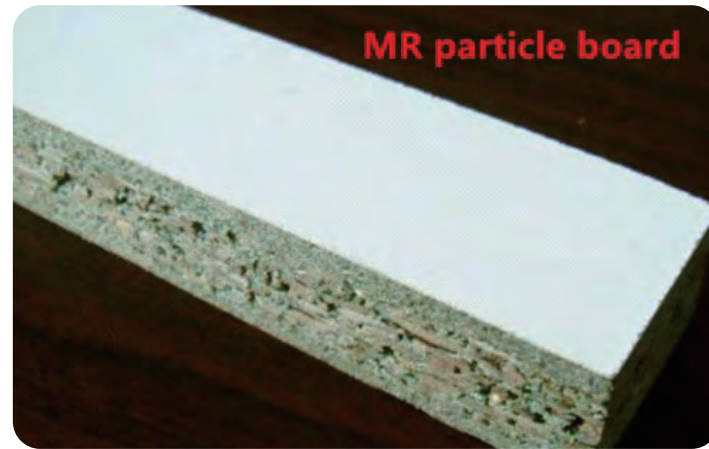
Pine Blue-Violet



Glacier White with Silver Shimmer



MR particle board



particle board



BLUM Box systems TANDEMBOX plus



BLUM Box systems TANDEMBOX intivo



Plywood painted



Plywood veneer



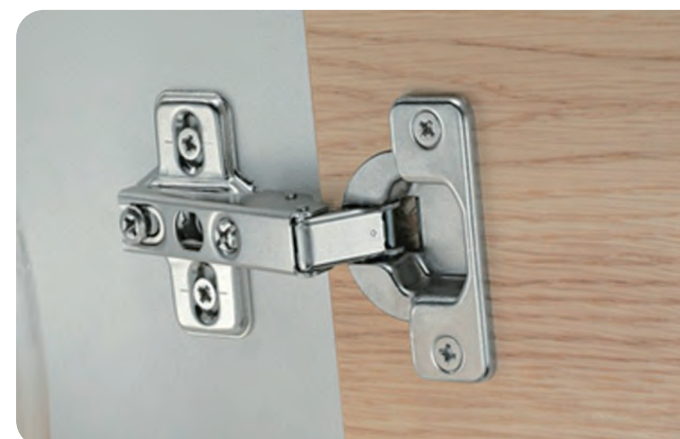
BLUM Runner systems MOVENTO



Solid wood



HMR MDF



Blum Hinge systems MODUL-hinges



BLUM Hinge systems CLIP top-hinges

SOLID WOOD KITCHEN DOOR PANEL

CANADIAN HARD MAPLE



S03
Process No.: FXG-03
Pattern Code: 108003
Door Panel Thickness: 22mm
Material: Canadian Hard Maple

RUBBER WOOD

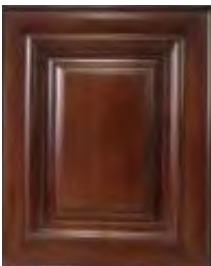


S25
Process No.: FXG-25
Pattern Code: 108025
Door Panel Thickness: 18mm
Material: Rubber Wood

EUROPEAN MAPLE BIRCH



S23
Process No.: FXG-23
Pattern Code: 108023
Door Panel Thickness: 22mm
Material: European Maple Birch



S22
Process No.: FXG-22
Pattern Code: 108022
Door Panel Thickness: 22mm
Material: European Maple Birch



S20
Process No.: FXG-20
Pattern Code: 108020
Door Panel Thickness: 22mm
Material: European Maple Birch



S14
Process No.: FXG-14
Pattern Code: 108014
Door Panel Thickness: 22mm
Material: European Maple Birch

AMERICAN ALDER



S26
Process No : FXG-26
Pattern Code: 108026
Door Panel Thickness: 22mm
Material: American Alder



S15
Process No: FXG-15
Pattern Code: 108015
Door Panel Thickness: 22mm
Material: American Alder

NORTH AMERICAN CHERRY



S21
Process No: FXG-21
Pattern Code: 108021
Door Panel Thickness: 22mm
Material: North American Cherry



S16
Process No: FXG-16
Pattern Code: 108016
Door Panel Thickness: 22mm
Material: North American Cherry



S17
Process No: FXG-17
Pattern Code: 108017
Door Panel Thickness: 22mm
Material: North American Cherry

AMERICAN RED OAK



S24
Process No: FXG-24
Pattern Code: 108024
Door Panel Thickness: 22mm
Material: American Red Oak



S19
Process No.: FXG-19
Pattern Code: 108019
Door Panel Thickness: 22mm
Material: American Red Oak



S18
Process No.: FXG-18
Pattern Code: 108018
Door Panel Thickness: 22mm
Material: American Red Oak

BLUM DRAWER



BLUM Inner dividing systems ORGA-LINE for TANDEMBOX-high fronted pull-out - open provisions



BLUM Inner dividing systems ORGA-LINE kitchen accessories - Blum plate holder



BLUM Inner dividing systems ORGA-LINE for TANDEMBOX-drawer

BLUM LIFT SYSTEMS



AVENTOS HF



AVENTOS HL



AVENTOS HS



AVENTOS HK

DTC SYSTEMS



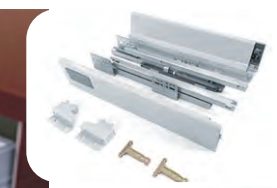
DTC DOUBLE-WALL
DRAWER SYSTEMS DRAGON-BOX



DTC DOUBLE-WALL
DRAWER SYSTEMS DRAGON-BOX



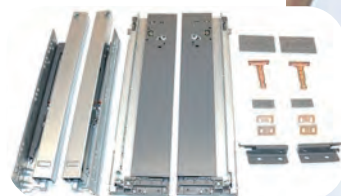
DTC DOUBLE-WALL
DRAWER SERIES



DTC MAGIC-MOVE
UNDERMOUNT SLIDE SERIES



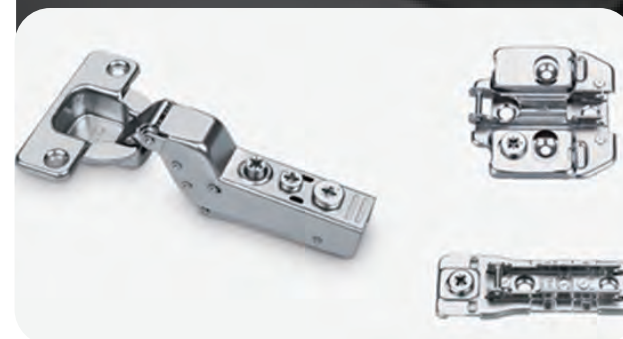
DTC MAGIC-PRO
DRAWER SERIES



DTC Lifting System TOP-STAYS



DTC PIVOT-STAR SERIES



DTC PIVOT-PRO SERIES



DTC Dongtai hinge
rebound device

WILLAMARCHI



HIGOLD Swing Trays



HIGOLD Magic Corner



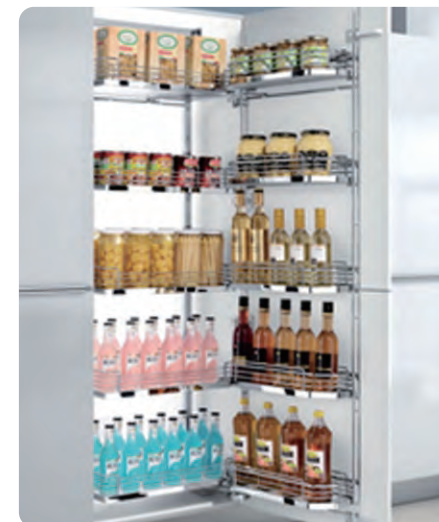
HIGOLD Show Hand Corner



HIGOLD Revolving Basket



HIGOLD
ARENA-Tall Unit Basket



HIGOLD ARENA-Swivel
Pull-out Basket



HIGOLD Diamond style-
Pull out Basket



HIGOLD Diamond style-
Mul Basket



HIGOLD Diamond style-
Iron Basket



HIGOLD Diamond style-
Iron Basket



HIGOLD Fashion-Pull
out Basket



HIGOLD PANDOLA
Basket



HIGOLD Clear-liquid rack



HIGOLD Clear-Waste Bin



HIGOLD SS-Draining Racks



HIGOLD Triple Paper towel rack



HIGOLD Clear-Waste Bin



HIGOLD Clear-Waste Bin



HIGOLD Knife rack



HIGOLD Multifunction hook

COUNTERTOP PROFILE



model:T01
name:straight



model:T03
name:Round edge low water



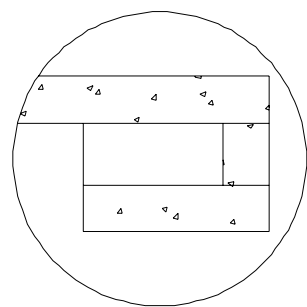
model:T04
name:Roman side



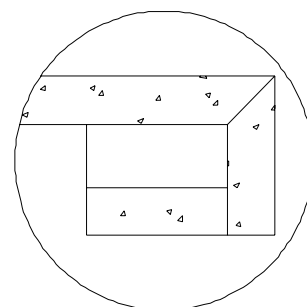
model:T07
name:straight edge is low to block water



model:T09
name:Roman side

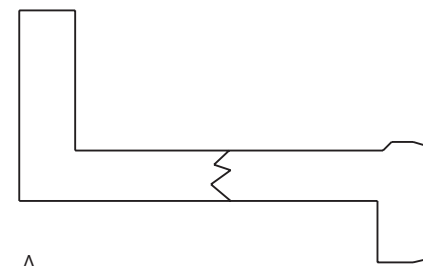


name:Artificial stone craft

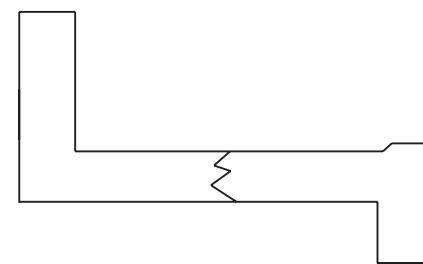


name:Quartz stone process

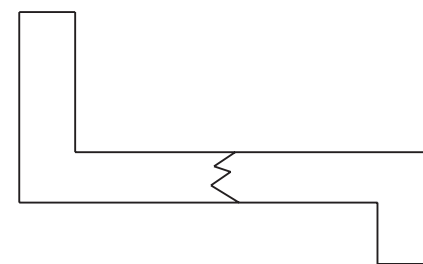
Stainless steel countertop
Before the mouth shape



A

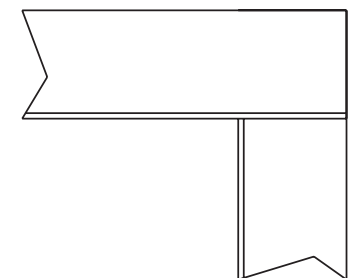


B

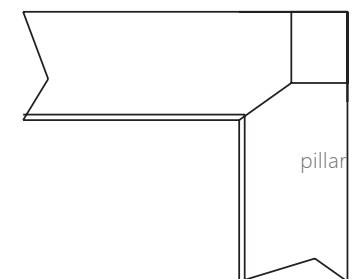


C

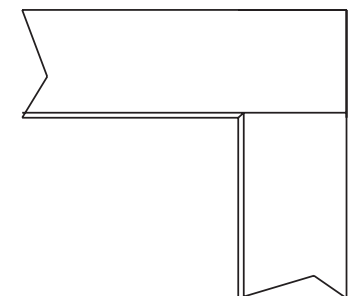
Stainless steel countertop
Before the mouth shape



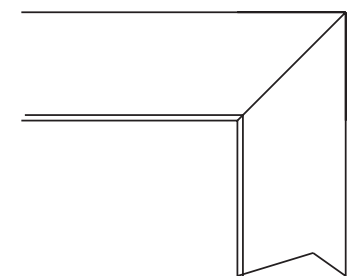
Straight spell



Inclined to spell



Inclined to spell



Inclined to spell

FAUCET



01



05



07



08



11



02



03



04



06



09



10



12

STAINLESS STEEL SINK



04



04



04



04



04



04



04



04



04



04



04

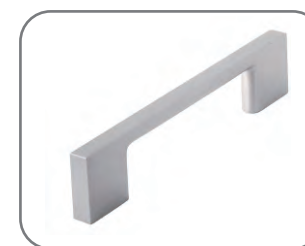
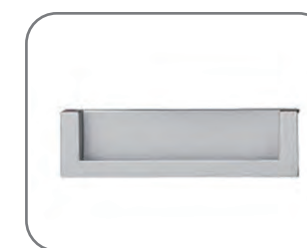
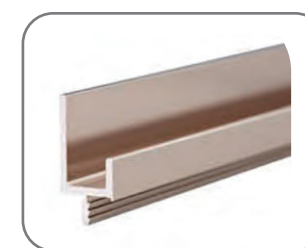


04



04

HANDLE



WOOD LINE \ MARBLE PILLAR \ RANGE HOOD



Model: LMX01
Specification: Width 50mm
Material: Painted/Injected-molded solid wood



Model: LMX02
Specification: Width 50mm
Material: Injected-molded solid wood



Model: LMX03
Specification: Width 100mm
Material: Solid wood



Model: LMX08
Specification: Width 100mm
Material: Solid wood



Model: HSMO1
Name: Solid Wood Hanger
Specification: 2400W x 750D x 150H



Model: SX02
Name: Solid Wood Top Line
Specification: Height 65mm



Model: CPM01



Model: Louvered Door
Material: Injected-molded, solid wood, painted



Model: SX04
Name: Solid Wood Top Line
Specification: 115mm



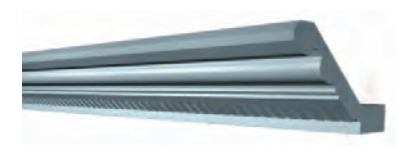
Model: SX01
Name: Solid Wood Top Line
Specification: Height 65mm



Model: KX01
Name: Painted Top Line
Specification: Height 45mm



Model: SX03
Name: Solid Wood Under-light Line
Specification: Height 40mm



Model: XS02
Name: Injected-molded Top Line
Specification: Height 80mm



Model: SX01
Name: Injected-molded Top Line
Specification: Height 70mm



Model: LMX04
Specification: Width 50mm
Material: Solid wood



Model: LMX07
Specification: Width 80mm
Material: Solid wood



Model: LMX06
Specification: Width 50mm
Material: Solid wood



Model: LMX05
Specification: Width 60mm
Material: Solid wood



Model: LMX09
Specification: Width 50mm
Material: Solid wood



Model: CPM02

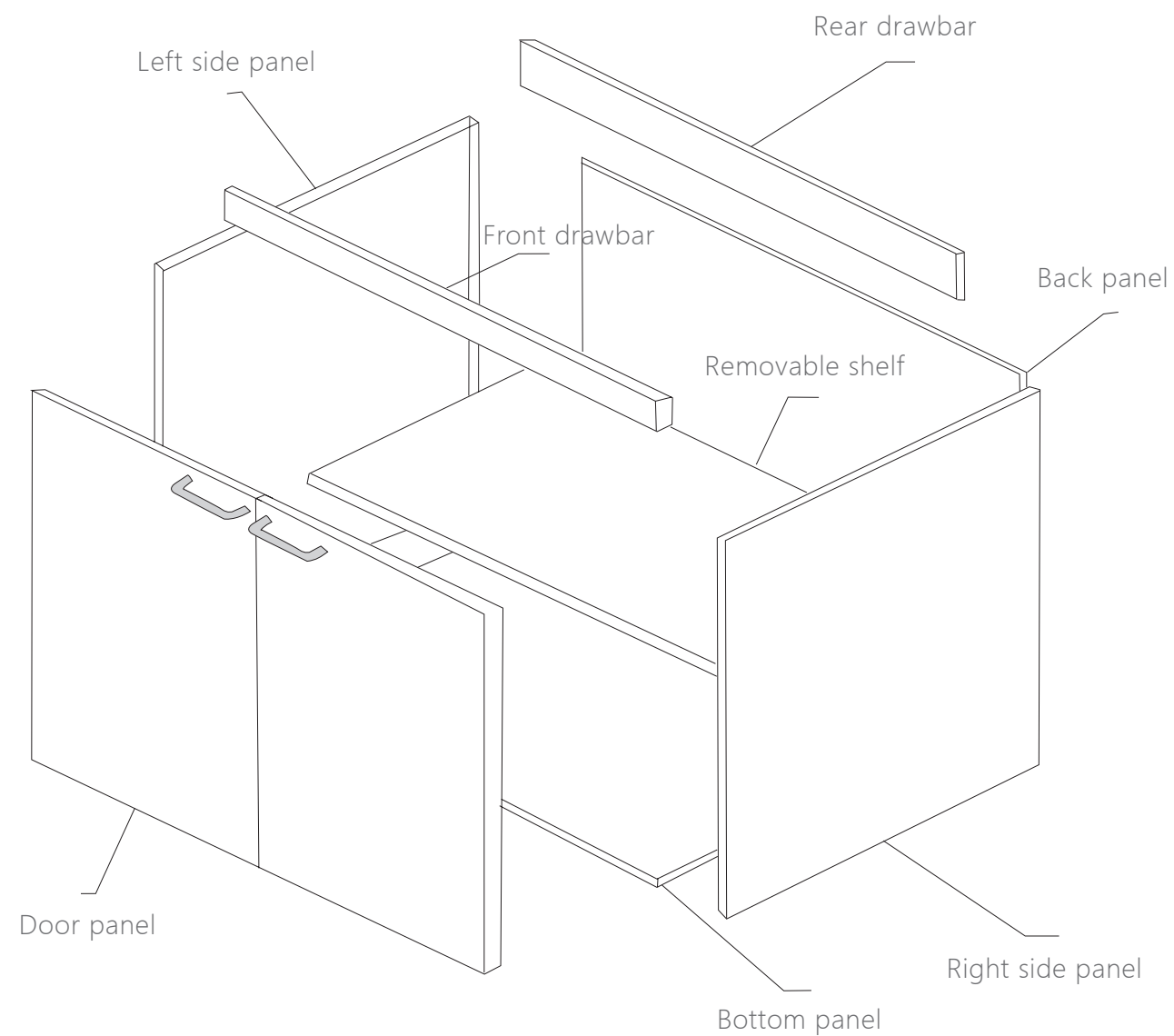


Model: CPM04

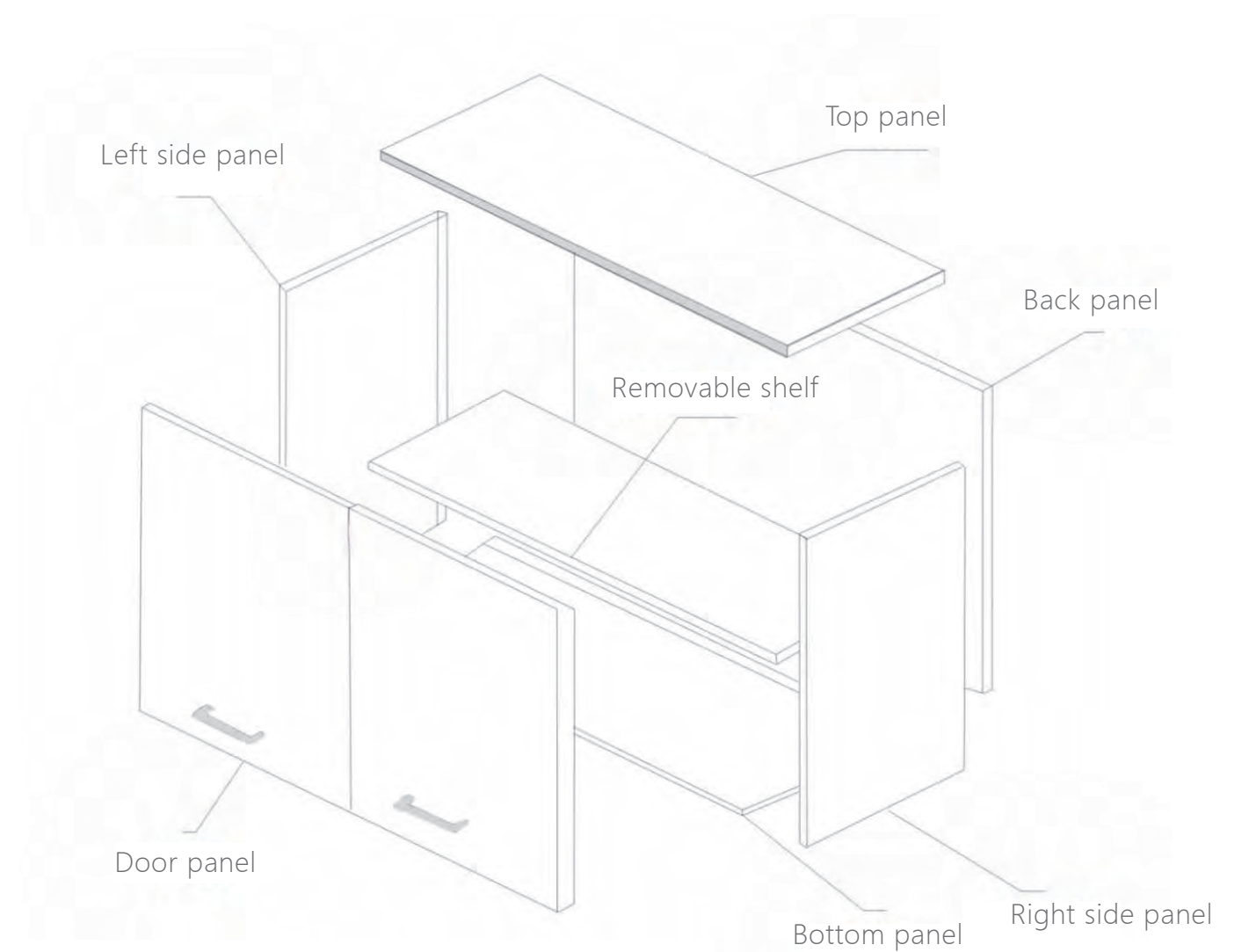


Model: CPM05

DRAWINGS



BASE CABINET



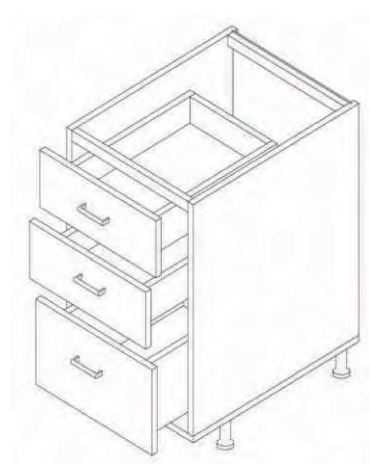
WALL CABINET

The cabinet adopts double decorative panel with 18mm international standard plate thickness, dustproof strip edge sealing, log tenon connection, eccentric locking, tight combination and good stability, embedded backboard. The top cabinet is hanging code, three dimensional adjustable.

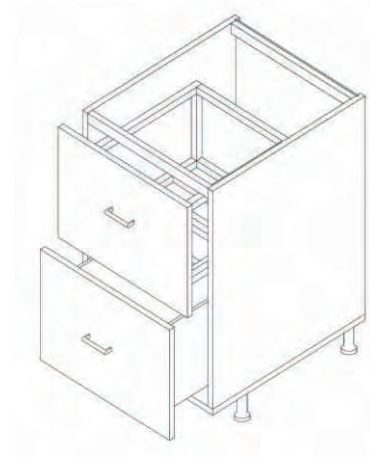
BASE CABINET



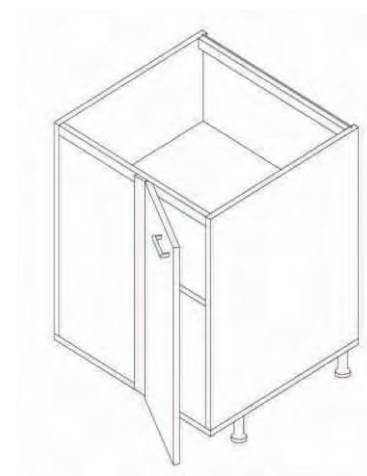
Base cabient 3 drawers
1M height and 2D height



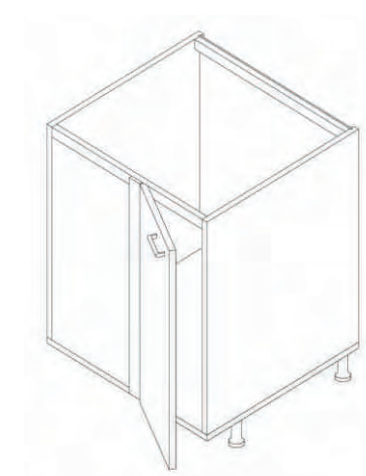
Base cabfriet 3 drawers
2M_height and 1D height



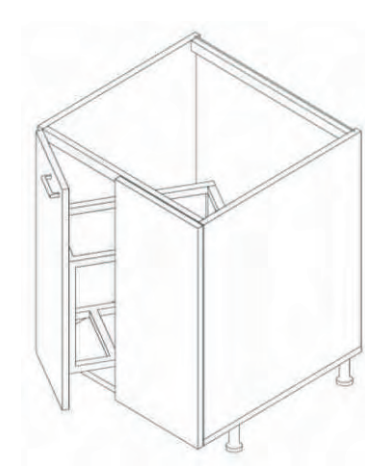
Base cabinet 1 drawer with basket



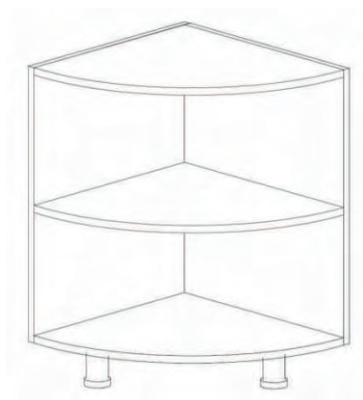
Base blind cabinet 1 door



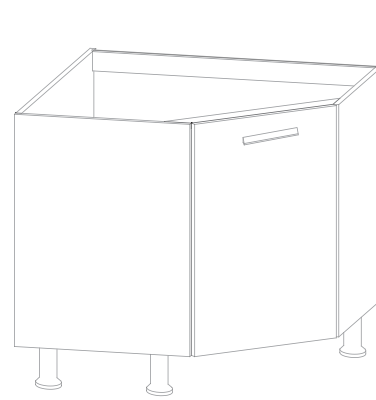
Base blind cabinet with lazy susan



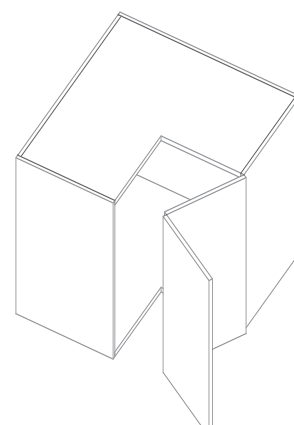
Base cabinet with basket



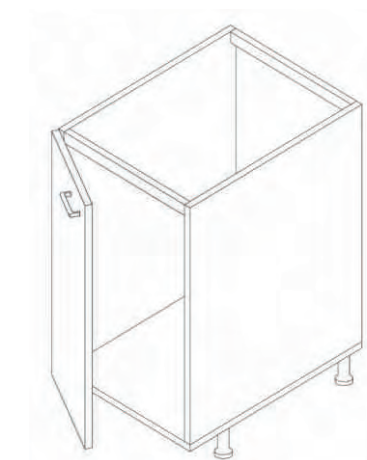
Open shelf cabinet 2 shelves



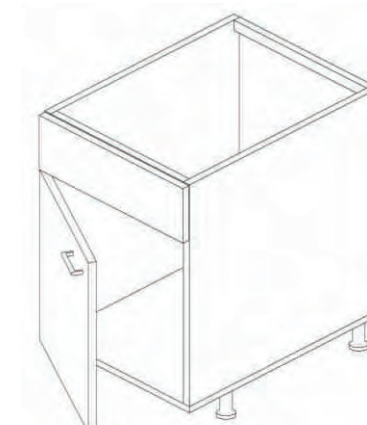
Base blind cabinet with lazysusan



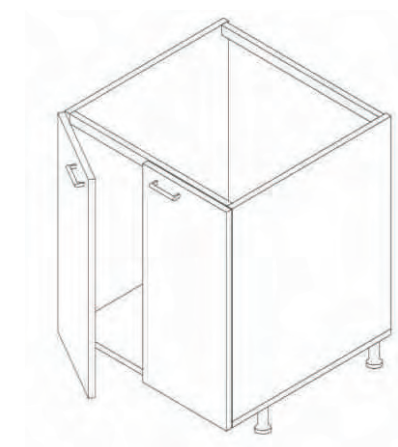
Base diagonal folding door
cabinet



Sink base cabinet 1 door

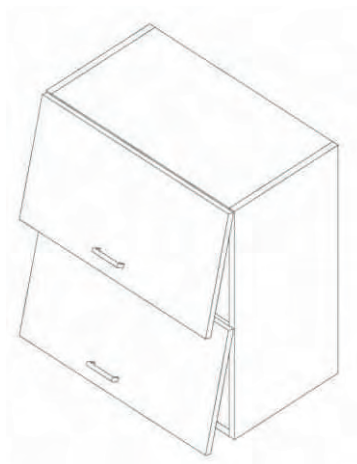


Sink base cabinet 1 door with fake
drawer

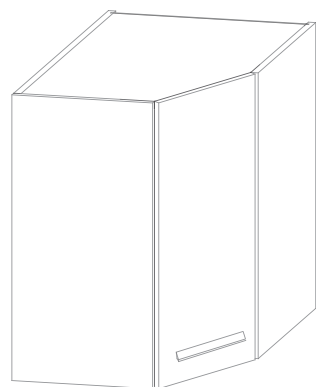


Sink base cabinet 2 door

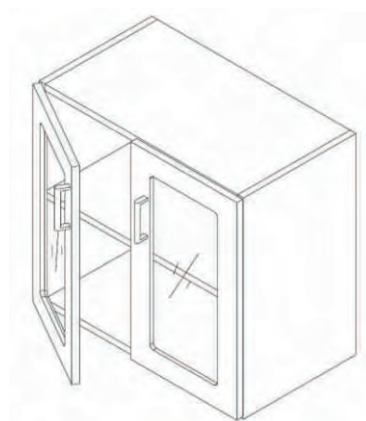
WALL CABINET



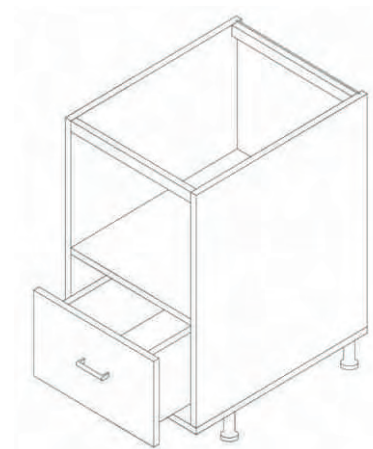
Wall lift-up cabinet 2 door



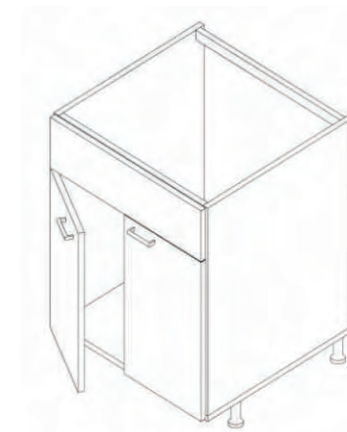
Corner wall cabinet 1 door



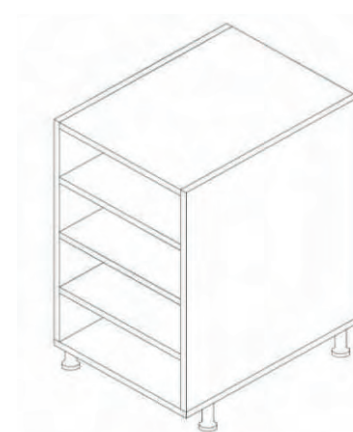
Wall cabinet 2 glass doors



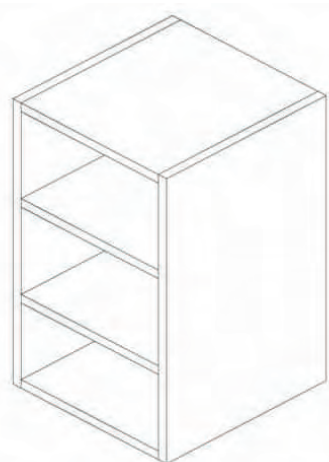
MW base cabinet with 1 drawer



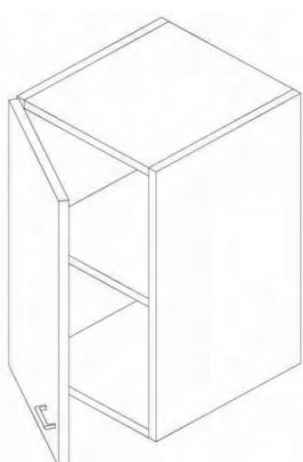
Sink base cabinet 2 door with fake drawer



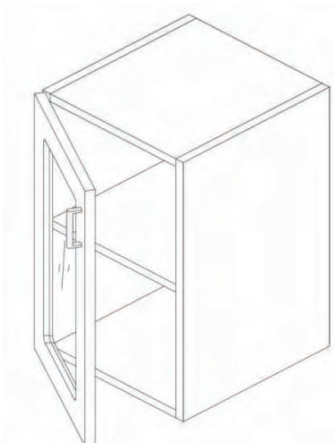
Open shelf cabinet 4 shelves



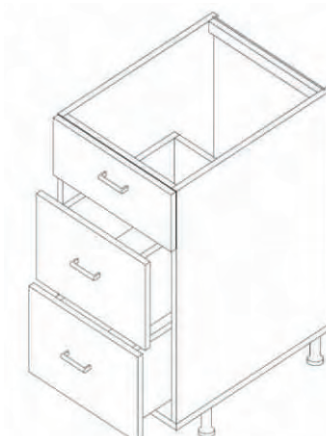
Open shelf wall cabinet 3 shelves



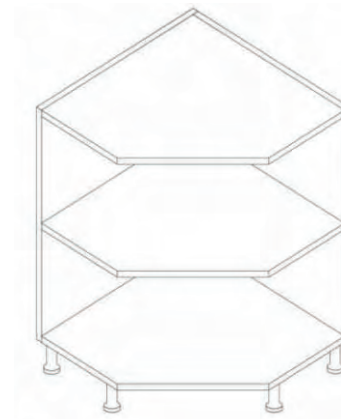
Wall cabinet 1 door



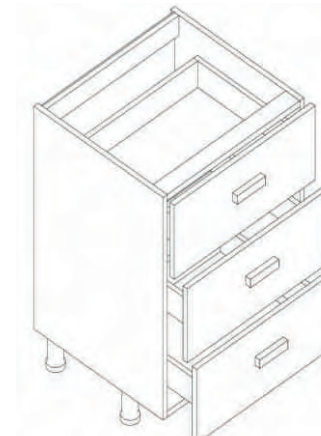
Wall cabinet 1 glass door



Base cabinet 2 drawers with fake drawer

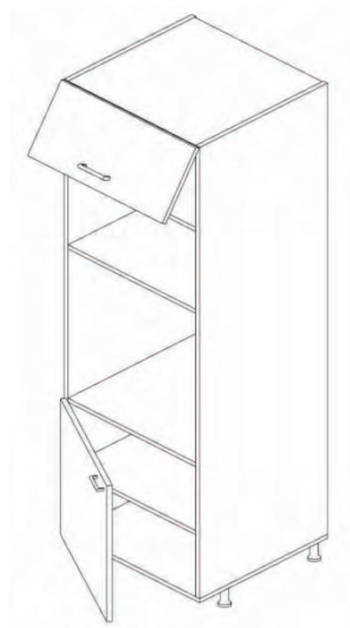


Corner open shelf cabinet 3 shelves

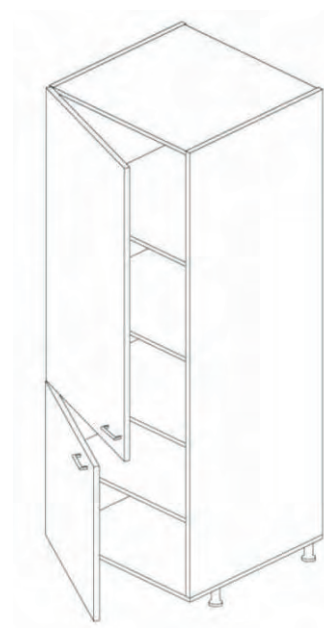


Base cabinet 3M height drawers

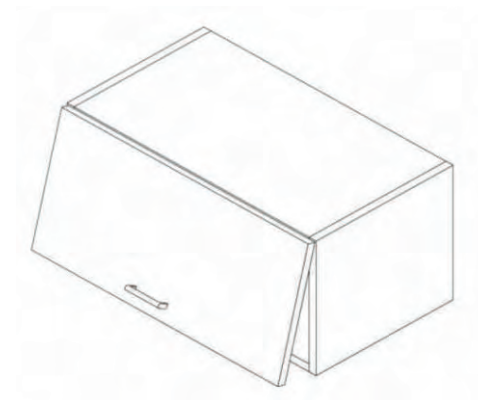
TALL CABINET



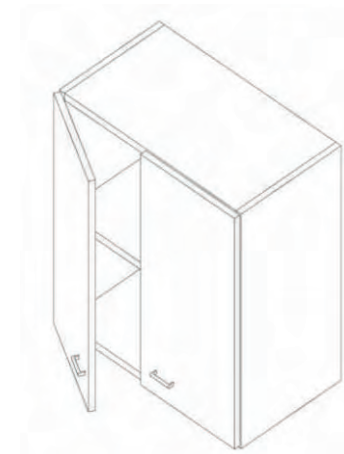
MW&oven tallcabinet



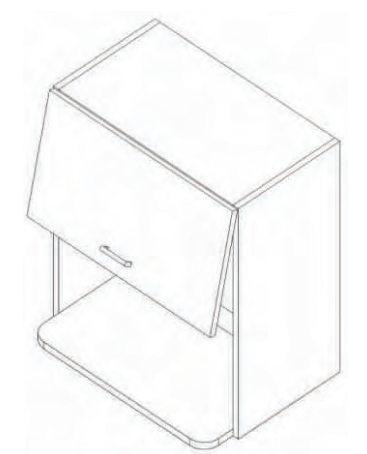
Utility tall cabinet



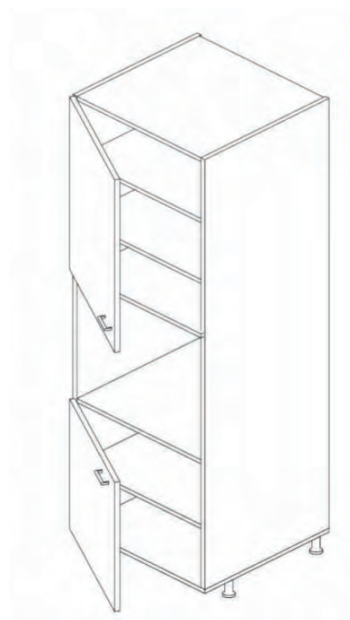
MW lift-up door cabinet



Wall blind cabinet 2 door



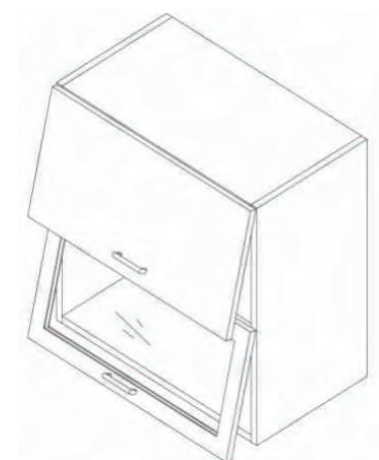
Wall lift-up MW cabinet



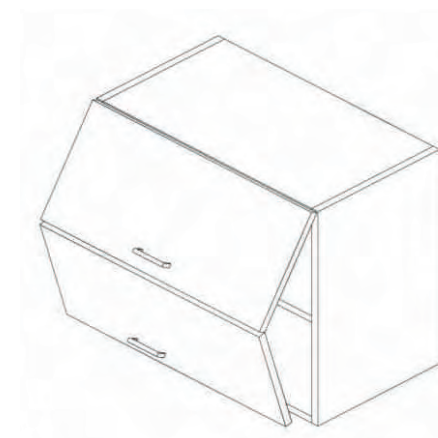
Oven tall cabinet



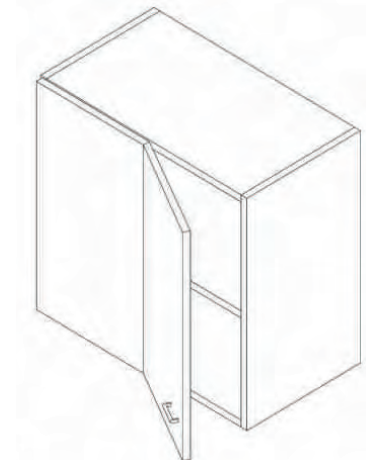
MW tall cabinet



Wall lift-tup cabinet 1 upper wood door 1 lower glass door

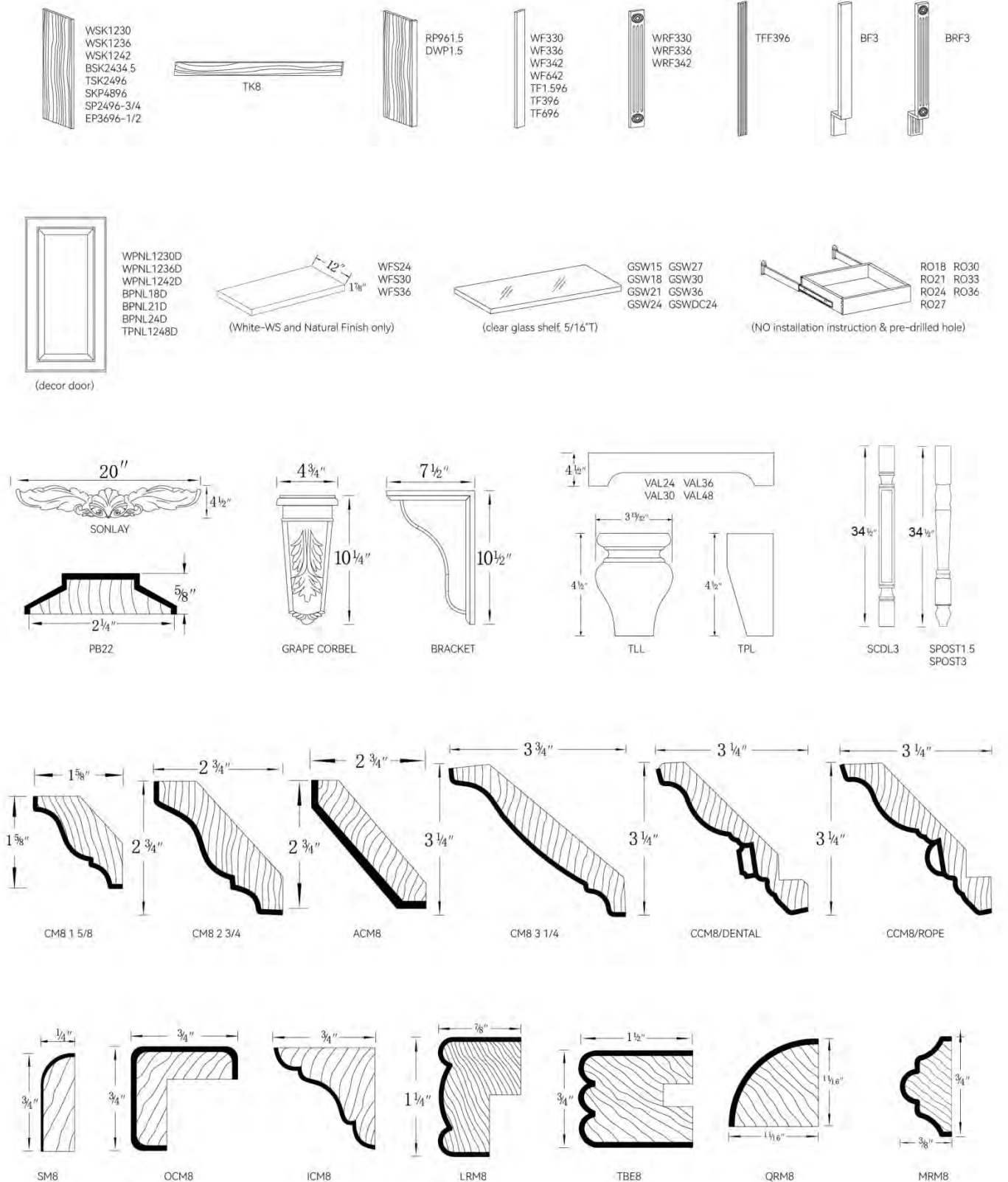


Wall cabinet fold door



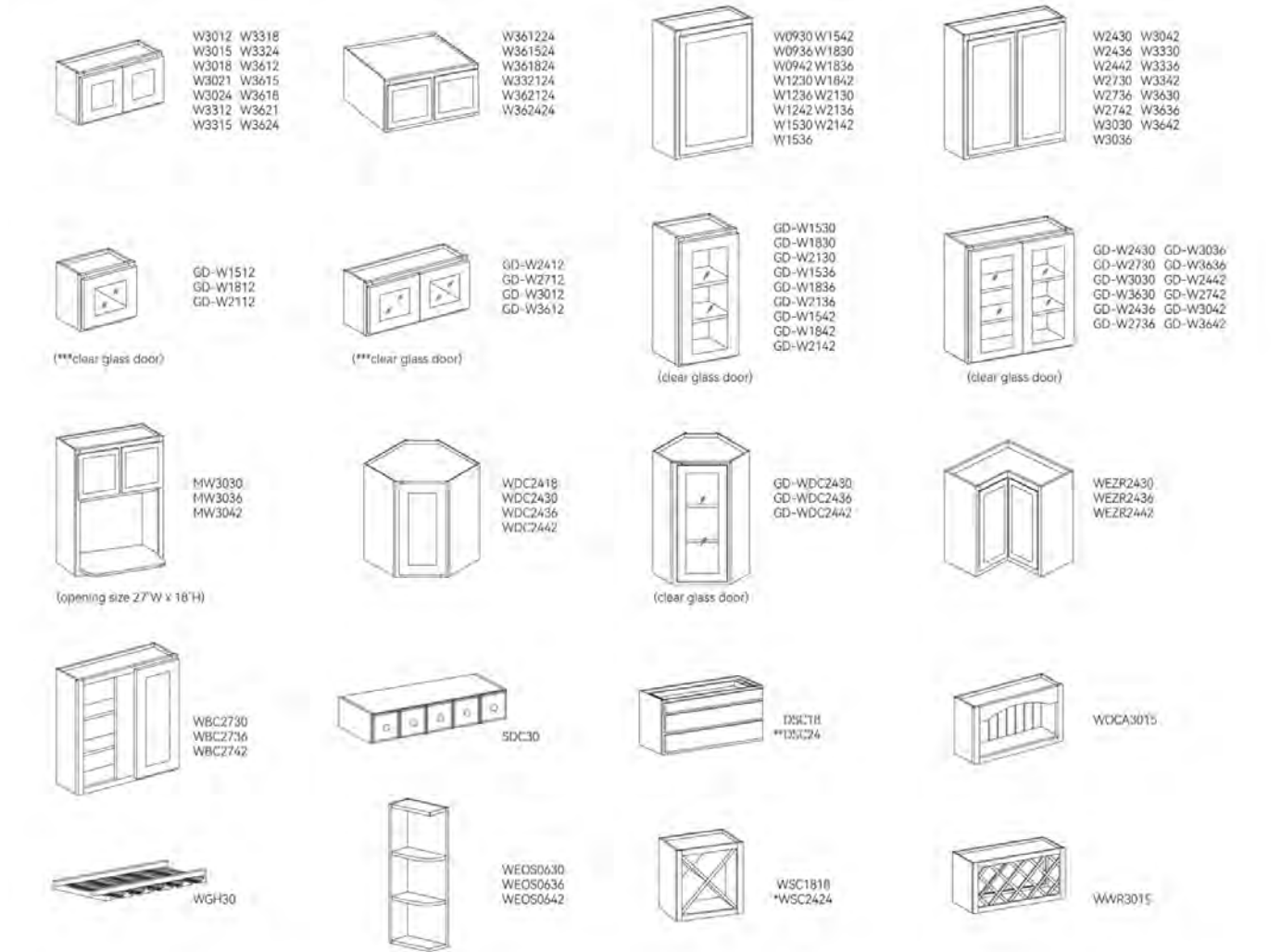
Wall blind cabinet 1 door

AMERICAN STYLE UNIT CABINET ACCESSORIES



AMERICAN STYLE UNIT CABINET ACCESSORIES

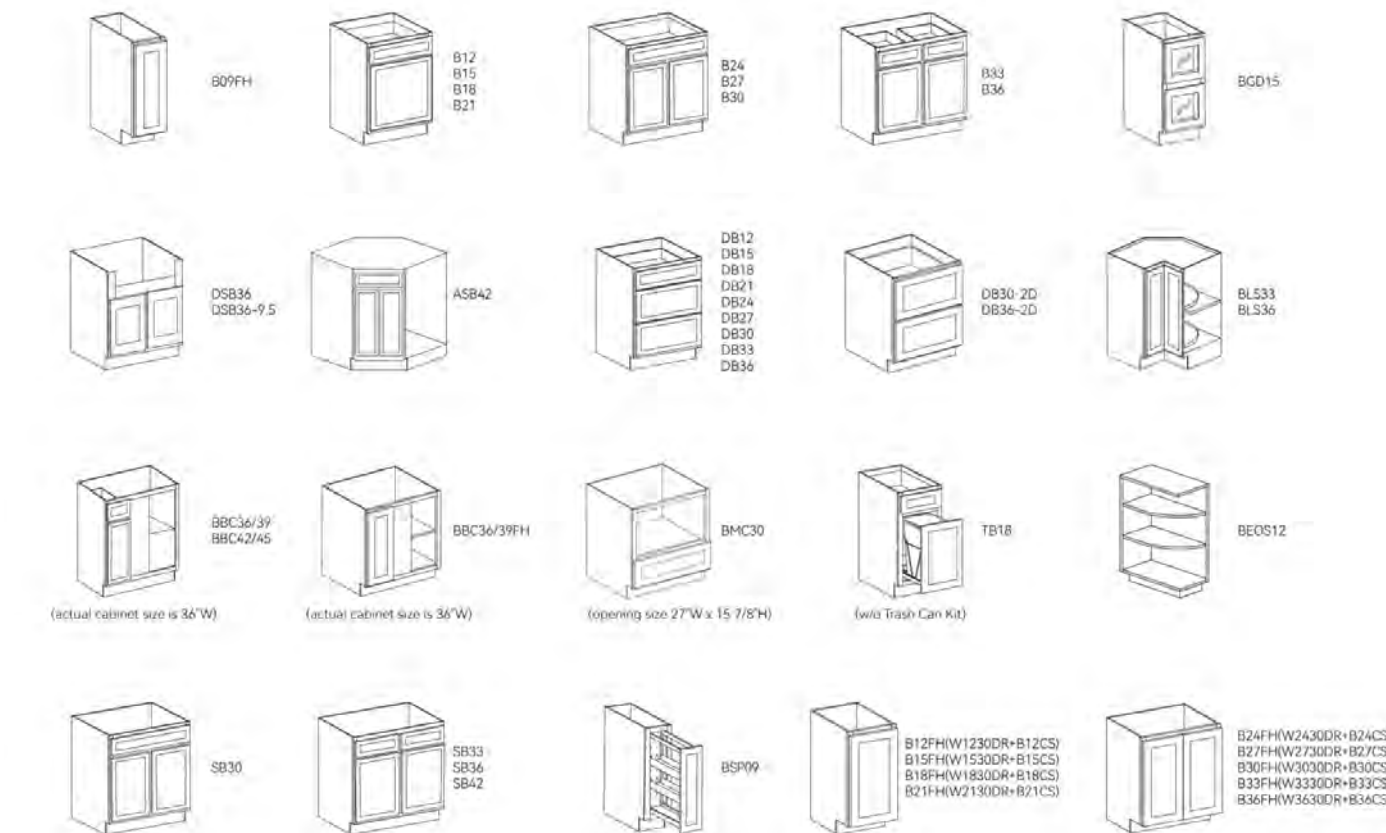
WALL CABINETS



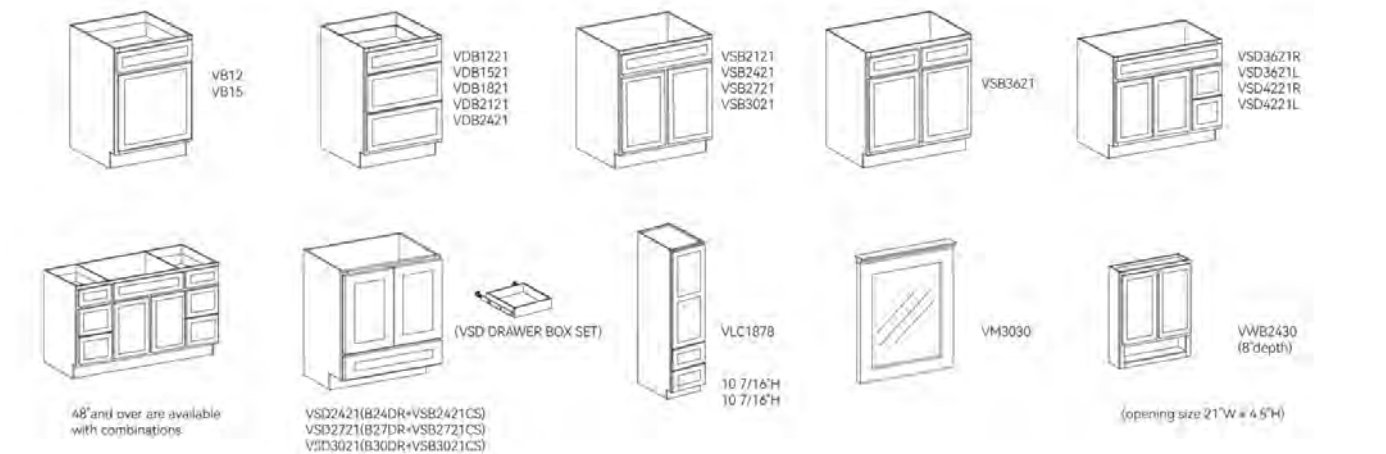
TALL CABINETS



BASE CABINETS



VANITY CABINETS



CONDUCT A CLIENT VISIT

