

# ALUMINUM DOOR AND WINDOW

WILLIAMARCHI LIMITED  
WilliamArchi.com

THE ONE STOP SERVICE FOR ALL  
YOUR HOUSING PROJECT NEEDS




The one stop service for all your housing project needs

 **Add1:** No. 7 Xiebian Liangbian Industrial Zone, Dali Town, Nanhai District, Foshan City, Guangdong Province, China

 **Add2:** Guangmei Road Qianlin Industrial Park, Huzhen, Boluo County, Huizhou City, Guangdong Province, China

 **Email:** market@williamarchi.com      Whatsapp: +86 13088859386

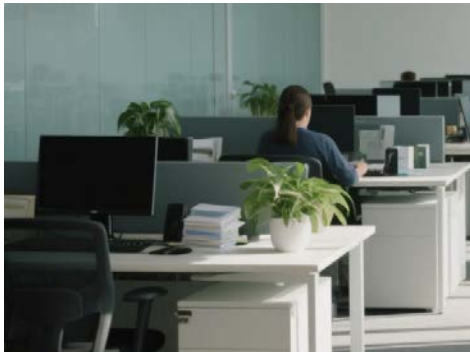
 **Tel:** 0086 0755-23696342

 **Web:** williamarchi.com

2025

THE ONE STOP SERVICE FOR ALL YOUR HOUSING PROJECT NEEDS





## LEADING BRAND OF HIGH-END SECURITY DOORS AND WINDOWS

— Focused | Professional | Global —

WilliamArchi specializes in R&D, manufacturing, and sales of premium aluminum window & door. With a 30,000-sqm intelligent production base in Foshan and a dedicated engineering team, we deliver tailored solutions for:

► Municipal Projects | ► Commercial Complexes | ► High-end Residences

### Core Commitment:

"Winning trust through expertise and precision craftsmanship"

- Integrated 60-stage quality control procedures
- Compliance with international safety certifications
- Customized design & manufacturing services

### Global Reach:

Serving 100+ countries and regions including USA, Canada, UK, Australia, and Southeast Asia.

## ABOUT US WilliamArchi Limited



1500+m<sup>2</sup>  
office



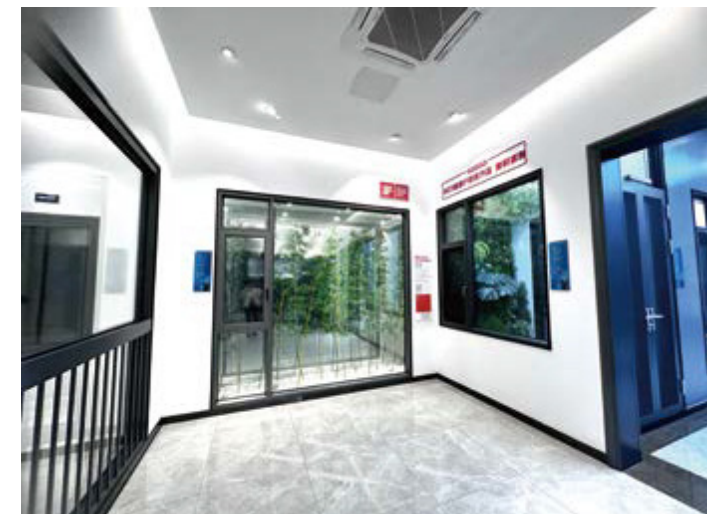
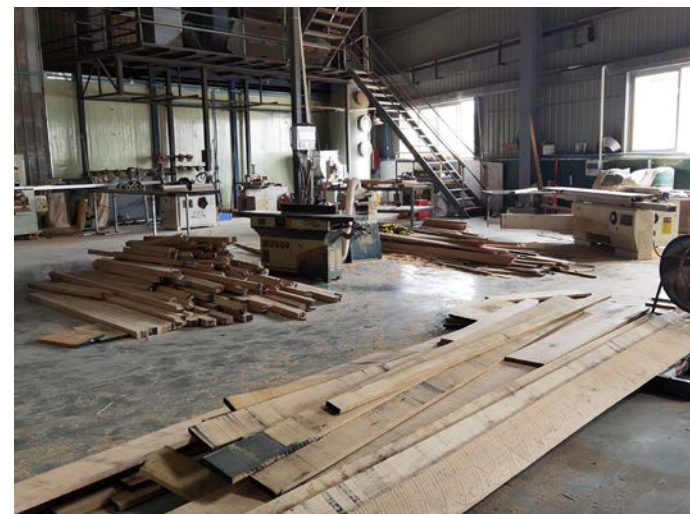
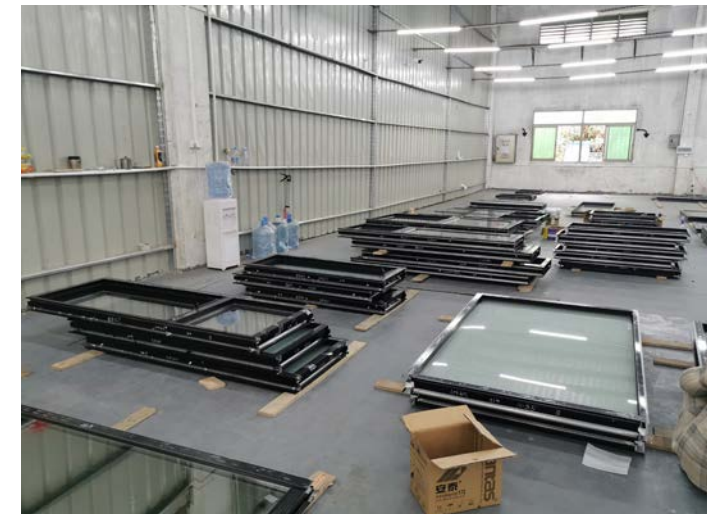
30000m<sup>2</sup>  
factory



100+  
team



100+  
countries





## INTEGRATED INDUSTRIAL CHAIN



As a leading supplier for many different building materials , we mainly work with Developers, Contractors, Home owners, Designers and the Architects. We have our own DESIGN TEAM and Quality Control Center. You only need to send us your projects Plan drawings then we make the solutions for you. We have been in the building materials business for many years. Our reputation resulted from the good feedback from the finished projects located in over the 35 countries. For example: The USA, Canada, Australia, Mauritius, Ghana ,Kenya, Thailand Caribbean Countries and European Countries etc.

## CERTIFICATE



### AUSTRALIAN STANDARD

As2047 refers to the mandatory minimum specification by the Building Code Australia (BCA) for windows and doors used in Australia. It includes compliance to the Glass Standard AS1288-glass in buildings. The YY windows has been tested by a NTA approved testing facility for the achievement of As2047.



### FLORIDA APPROVAL

Mandatory Tests (Tested in accordance with Florida Building Code Tests Protocols). YY windows product has been evaluated for use inside and outside of the HVHZ (High Velocity Hurricane Zone).



### AUSTRALIAN STANDARD

This NOA is being issued under the applicable rules and regulations governing the use of construction materials. The documentation submitted has been reviewed and accepted by MiamiDade County RER-Product Control Section to be used in Miami Dade County and other areas where allowed by the Authority Having Jurisdiction(AHJ).



### NFRC

Every NFRC-rated window has a label affixed to it displaying its ratings. NFRC window ratings are the best available, as they are used by the U.S. Environmental Protection Agency's ENER-GY STAR® program to evaluate windows.



### CSA GROUP

Canadian and U.S. verification: Our marks prove that energy efficiency requirements outlined by Natural Resources Canada(NRCAN), Canadian provincial energy efficiency regulations, California Energy Commission(CEC), and the U.S. Department of Energy (DOE) have been fully met.



CONTENTS

<b>ALU MINUM CASEMENT WINDOW</b>	
50 SERIES CASEMENT WINDOW	07
55 SERIES CASEMENT WINDOW	09
108 SERIES CASEMENT WINDOW	11
<b>ALUMINUM AWNING WINDOW</b>	
50 SERIES AWNING WINDOW	13
55 SERIES AWNING WINDOW	15
108 SERIES AWNING WINDOW	17
<b>ALUMINUM SLIDING WINDOW</b>	
80 SERIES SLIDING WINDOW&DOOR	19
126 SERIES SLIDING WINDOW	21
<b>ALUMINUM TILT &amp; TURN WINDOW &amp; DOOR</b>	
50 SERIES TILT & TURN WINDOW	23
55 SERIES TILT & TURN WINDOW	25
108 SERIES TILT & TURN WINDOW	27
188 SERIES ALUMINUM LIFT-TRUN SLIDING DOOR	29
<b>KFC DOOR</b>	33
<b>AUSTRALIA STANDARD WINDOW AND DOOR</b>	
90 SERIES AUSTRALIA STANDARD WINDOW AND DOOR	37
100 SERIES AUSTRALIA STANDARD WINDOW AND DOOR	39
100 SERIES KFC FRENCH DOOR	41
AUSTRALIA STANDARD WINDOW AND DOOR	43
110 SERIES AUSTRALIA STANDARD 3 TRACK SLIDING DOOR TRIPLE GLASS	45
182 SERIES AUSTRALIA 6 SLIDING DOOR	47
AWING WINDOW WITH FLYSCREEN THERMAL BREAK	49
<b>AMERICAN STANDARD WINDOWS AND DOORS</b>	
K80 SERIES CASEMENT WINDOW	53
K80 SERIES CASEMENT DOOR	55
150 SERIES SLIDING DOOR	57
K80 SERIES BI-FOLD DOOR	59
125 SERIES SILM SLIDING DOOR	61
<b>CANADA STANDARD WINDOWS AND DOORS</b>	
C80 SERIES CASEMENT DOOR	63
150 SERIES SLIDING DOOR	65
<b>ALUMINUM LOUVER WINDOW</b>	
50 SERIES ALUMINUM LOUVER	67
100 SERIES ALUMINUM LOUVER	69
100 SERIES ALUMINUM GLASS LOUVER	71
<b>ALUMINUM HUNG WINDOW</b>	
83 SERIES HUNG WINDOW	73
<b>ALUMINUM WINDOW NAILING FIN</b>	
ALUMINUM NAILING FIN	75
<b>ALUMINUM CASEMENT DOOR</b>	
50 SERIES CASEMENT DOOR	77
55 SERIES CASEMENT DOOR	79
108 SERIES CASEMENT DOOR	81

<b>80 SERIES CASEMENT WINDOW &amp; AWNING WINDOW &amp; TILT &amp; TURN WINDOW</b>	83
<b>ALUMINUM SLIDING DOOR</b>	
120 SERIES SLIDING DOOR	
190 SERIES SLIDING DOOR	85
132 SERIES SLIDING DOOR	87
202 SERIES SLIDING DOOR	89
<b>ALUMINUM BI-FOLD DOOR</b>	91
75 SERIES BI-FOLD DOOR	93
70 SERIES BI-FOLD DOOR	95
<b>106 SERIES SLIDING &amp; TILT-TURN WINDOW</b>	97
<b>112 SERIES HIGH - INSULATION SYSTEM WINDOW</b>	101
<b>112 SERIES TILT-TURN WINDOW</b>	103
<b>120 SERIES FULL SEAMLESS WELDING WINDOW</b>	105
<b>126 SERIES MINIMALIST SILENT DOORS AND WINDOWS</b>	109
<b>150 SERIES PANORAMIC FULL - HIDDEN DOOR</b>	111
<b>ALUMINUM SLIM FRAME DOOR</b>	
16 SERIES SLIM SLIDING DOOR	113
16 SERIES SLIM CASEMENT DOOR	115
<b>18 SERIES SLIM FRAME ALUMINUM CASEMENT DOOR</b>	117
<b>ULTRAL SLIM ALUMINUM PIVOT DOOR</b>	121
<b>ULTRAL SLIM GLASS BI-FOLD DOOR</b>	123
<b>ULTRAL SLIM ALUMINUM SLIDING DOOR/BARN DOOR</b>	125
<b>FRAMLESS GLASS BI-FOLD DOOR</b>	127
<b>ALUMINUM GLASS CURTAIN WALL</b>	
ALUMINUM CURTAIN WALL	129
<b>GLASS PERFORMANCE DESCRIPTION</b>	131
<b>GLASS PERFORMANCE DATA</b>	133
<b>ALUMINUM SURFACE COLOR SWATCH</b>	135
<b>ALUMINUM HARDWARE DETAILS</b>	137
<b>PRODUCTION LINE &amp; PACKAGE</b>	139
<b>ALUMINUM WINDOW &amp; DOOR PROJECT</b>	141
<b>CONDUCT A CLIENT VISIT</b>	143







# 50 SERIES CASEMENT WINDOW

ITEM NO:  
WA-50

SERIES:  
50mm


SURFACE FINISH:  
Powder coating


GLASS SPECIFICATION :  
Single glass/ 5+12A+5mm insulated clear tempered

ALU THICKNESS:  
1.4/1.6 mm


HARDWARE:  
China top brand


BASIC PARAMETERS:

 Thermal insulation coefficient:  
UW 3.0~3.8 W/(M²·K)

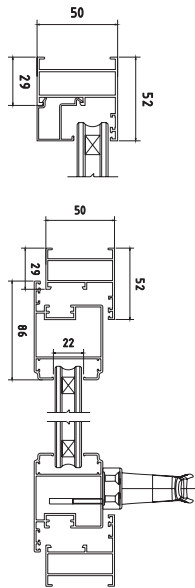
 Wind pressure resistance:  
2500Pa

 Air tightness:  
LEVEL 6

 Water tightness:  
350 ≤ ΔP < 500 Pa

 Sound insulation  
performance:  
34~37dB

EXAMPLE PICTURE:





ITEM NO:  
WA-55

SERIES:  
55mm

SURFACE FINISH:  
Powder coating

GLASS SPECIFICATION :  
Single glass/ 5+12A+5mm insulated clear tempered

ALU THICKNESS:  
1.4/1.8 mm

HARDWARE:  
China top brand

#### BASIC PARAMETERS:



Thermal insulation coefficient:  
**UW 2.0~2.8 W/(M²·K)**



Wind pressure resistance:  
**3000~4000Pa**



Air tightness:  
**LEVEL7-8**

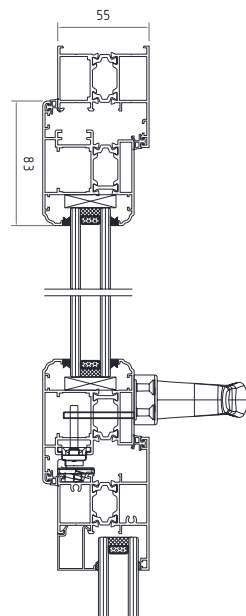


Water tightness:  
 **$500 \leq \Delta P < 700$  Pa**



Sound insulation  
performance:  
**RW UP TO 35dB**

#### EXAMPLE PICTURE:







# 108 SERIES CASEMENT WINDOW

ITEM NO:  
WA-108

SERIES:  
108mm

SURFACE FINISH:  
Powder coating

GLASS SPECIFICATION :  
5+27A+5mm insulated clear tempered with stainless steel mesh

ALU THICKNESS:  
1.4/1.6/2.0 mm

HARDWARE:  
China top brand

## BASIC PARAMETERS:



Thermal insulation coefficient:  
 $UW1.2 \sim 1.8 \text{ W/(M}^2\cdot\text{K)}$



Wind pressure resistance:  
 $\geq 4500 \sim 6000 \text{ Pa}$



Air tightness:  
LEVEL7~8

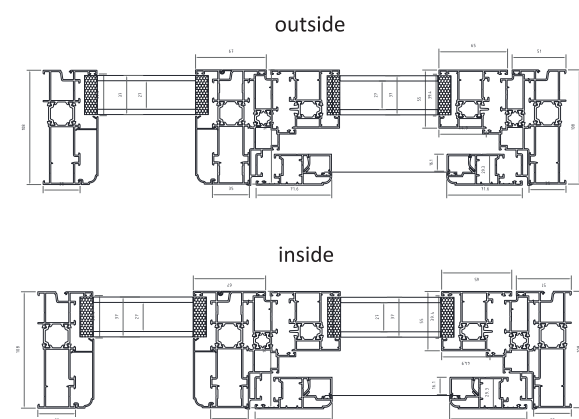


Water tightness:  
 $700 \leq \Delta P < 1000 \text{ Pa}$



Sound insulation  
performance:  
RW UP TO 38dB

## EXAMPLE PICTURE:





# 50 SERIES AWNING WINDOW

ITEM NO:  
WA-50-03

SERIES:  
50mm

SURFACE FINISH:  
Powder coating/PVDF coating

GLASS SPECIFICATION :  
5+12A+5mm insulated tempered glass

ALU THICKNESS:  
1.4/1.6 mm

HARDWARE:  
China top brand

BASIC PARAMETERS:



Thermal insulation coefficient:  
UW 3.0~3.8 W/(M²·K)



Wind pressure resistance:  
3000~4000 Pa



Air tightness:  
LEVEL 6

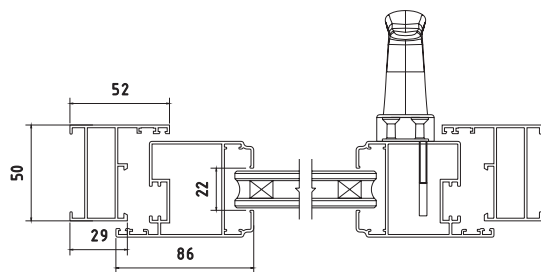
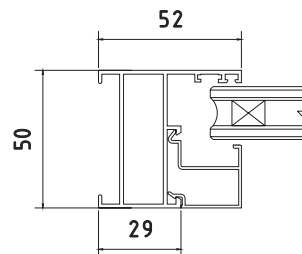


Water tightness:  
350 ≤ ΔP < 500 Pa



Sound insulation  
performance:  
RW UP TO 35dB

EXAMPLE PICTURE:



50  
AWNING  
WINDOW







# 55 SERIES AWNING WINDOW

ITEM NO:  
WA-55-03

SERIES:  
55mm


SURFACE FINISH:  
Powder coating/PVDF coating

GLASS SPECIFICATION :  
5+12A+5mm insulated tempered glass

ALU THICKNESS:  
1.4/1.6 mm


HARDWARE:  
China top brand

BASIC PARAMETERS:

 Thermal insulation coefficient:  
UW 2.2-2.9W/(M²·K)

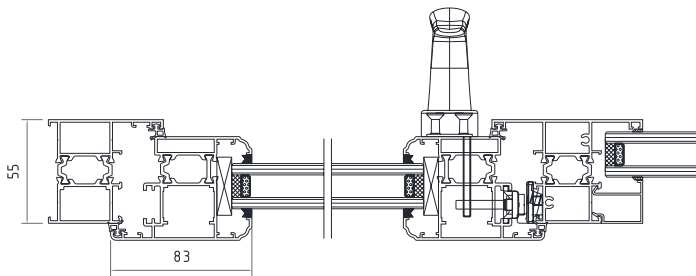
 Wind pressure resistance:  
3000~4000Pa

 Air tightness:  
LEVEL6

 Water tightness:  
 $350 \leq \Delta P < 500 \text{ Pa}$

 Sound insulation  
performance:  
RW UP TO 32dB

EXAMPLE PICTURE:







# 108 SERIES AWNING WINDOW

ITEM NO:  
WA-108-03

SERIES:  
108mm

SURFACE FINISH:  
Powder coating/ PVDF coating

GLASS SPECIFICATION :  
5+27A+5mm insulated tempered glass

ALU THICKNESS:  
1.4/1.6/2.0 mm

HARDWARE:  
China top brand

OPTIONAL CONFIGURATIONS:  
Window Screen/Grille

## BASIC PARAMETERS:



Thermal insulation coefficient:  
UW1.2~1.8 W/(M<sup>2</sup>·K)



Wind pressure resistance:  
4500~6000Pa



Air tightness:  
LEVEL7~8

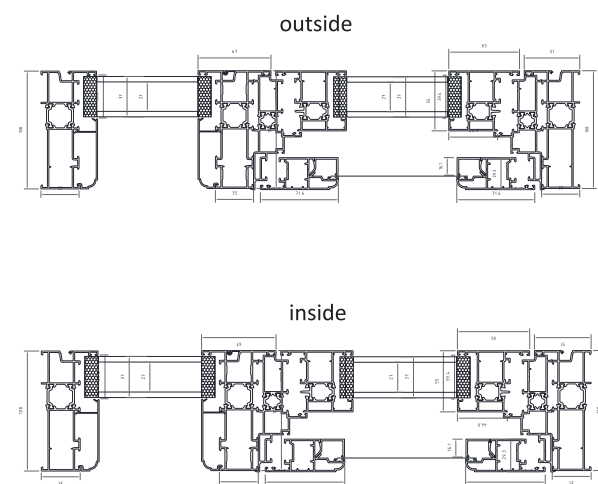


Water tightness:  
≥700~1000Pa



Sound insulation  
performance:  
RW UP TO 38dB

## EXAMPLE PICTURE:



108  
AWNING  
WINDOW





ITEM NO:  
WA-80-01

SERIES:  
80mm

SURFACE FINISH:  
Powder coating/PVDF coating

GLASS SPECIFICATION :  
5+12A+5mm insulated tempered glass

ALU THICKNESS:  
1.4/1.6 mm

HARDWARE:  
China top brand

ALUMINUM PROFILE:  
Thermal break/ Non-thermal break

## BASIC PARAMETERS:



Thermal insulation coefficient:  
**UW 2.5~3.2 W/(M²·K)**



Wind pressure resistance:  
**3000~3500Pa**



Air tightness:  
**LEVEL 4**

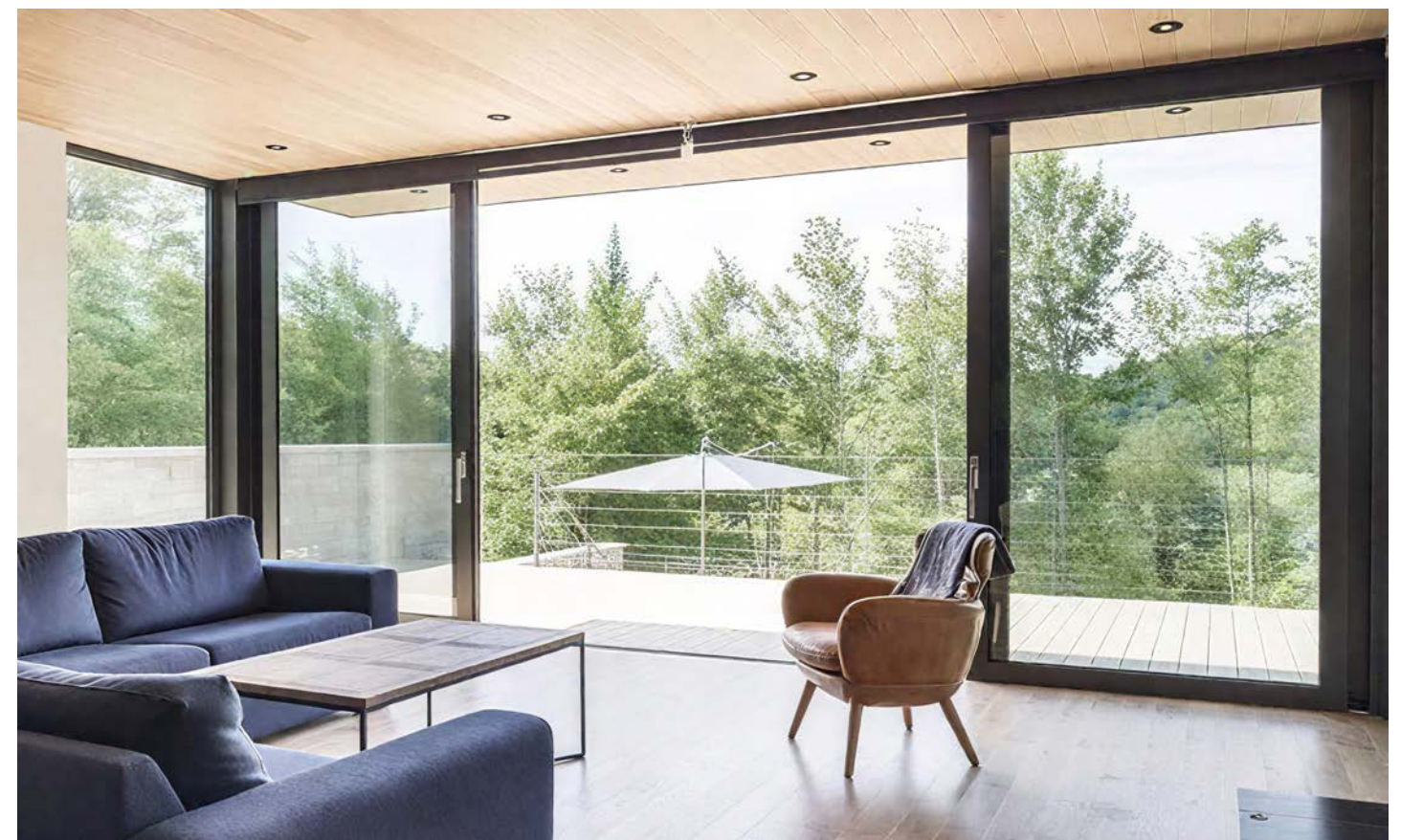
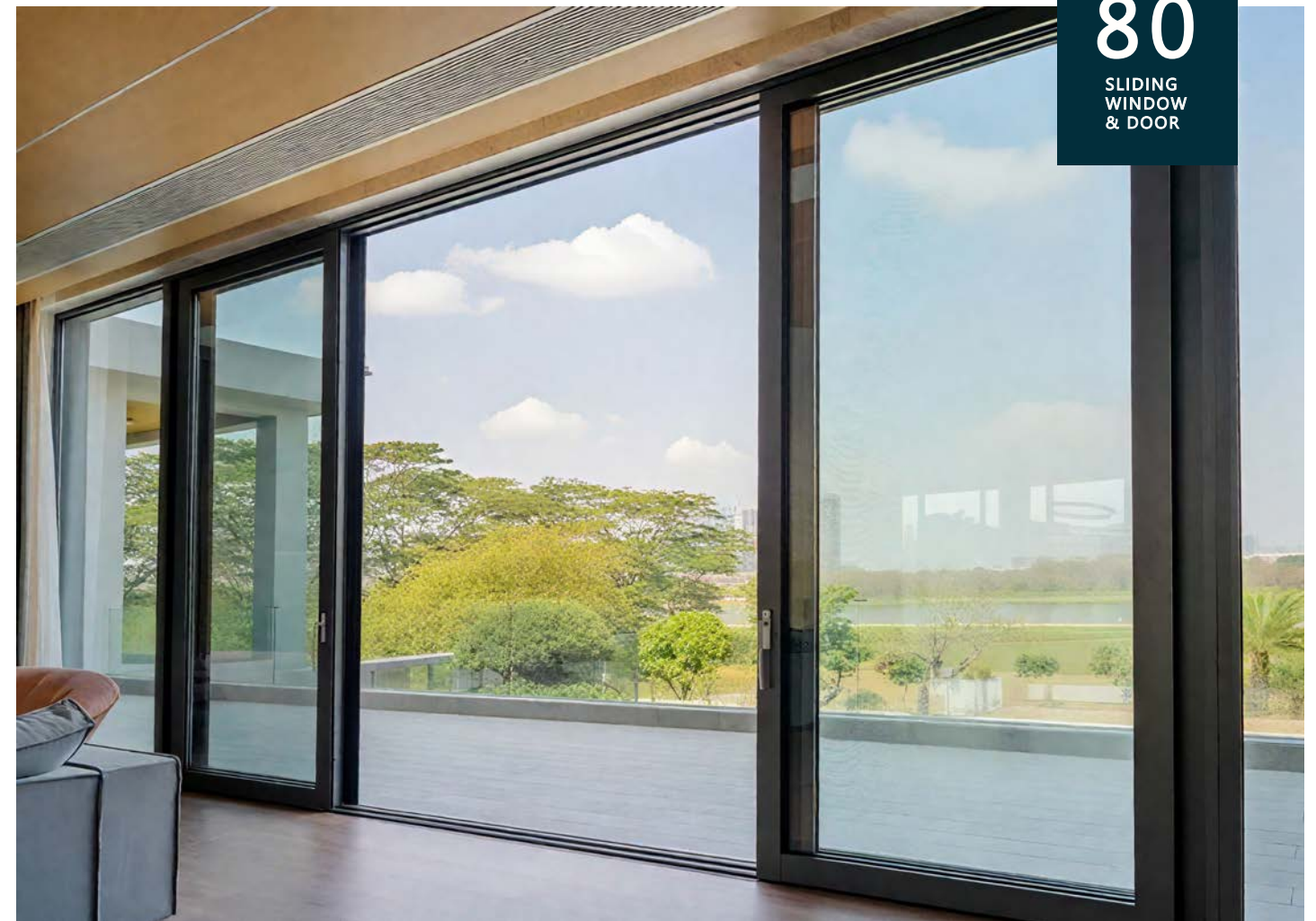
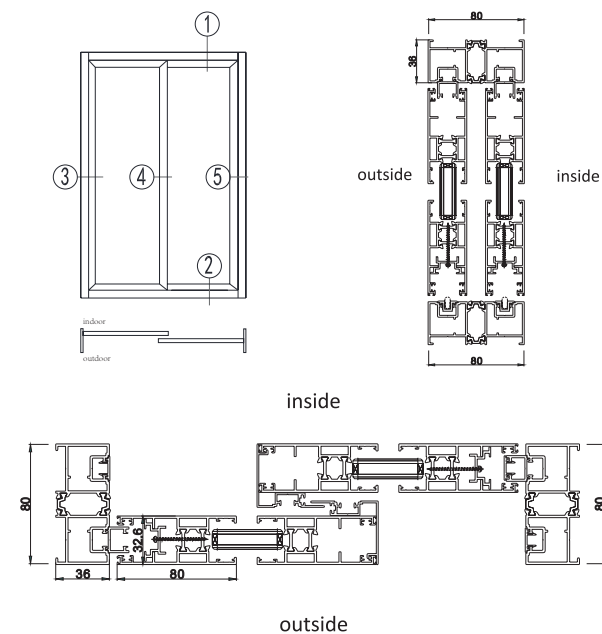


Water tightness:  
**350~500Pa**



Sound insulation  
performance:  
**RW UP TO 33dB**

## EXAMPLE PICTURE:







# 126 SERIES SLIDING WINDOW

ITEM NO:  
WA-126-01

SERIES:  
126mm

SURFACE FINISH:  
Powder coating/ PVDF coating

GLASS SPECIFICATION :  
5+27A+5mm insulated tempered glass

ALU THICKNESS:  
1.4/1.6mm

HARDWARE:  
China top brand

ALUMINUM PROFILE:  
Thermal break/ Non-thermal break

## BASIC PARAMETERS:



Thermal insulation coefficient:  
UW 2.3~2.8 W/(M²·K)



Wind pressure resistance:  
3500-4500Pa



Air tightness:  
LEVEL5-6



Water tightness:  
350-500Pa



Sound insulation  
performance:  
RW UP TO 37dB

## EXAMPLE PICTURE:



126  
SLIDING  
WINDOW





ITEM NO:  
WA-50-04

SERIES:  
50mm

SURFACE FINISH:  
Powder coating/PVDF coating

GLASS SPECIFICATION :  
5+12A+5mm insulated tempered glass

ALU THICKNESS:  
1.4/1.6 mm

## BASIC PARAMETERS:



Thermal insulation coefficient:  
**UW 3.2~4.5 W/(M²·K)**



Wind pressure resistance:  
**3500Pa**



Air tightness:  
**LEVEL7**

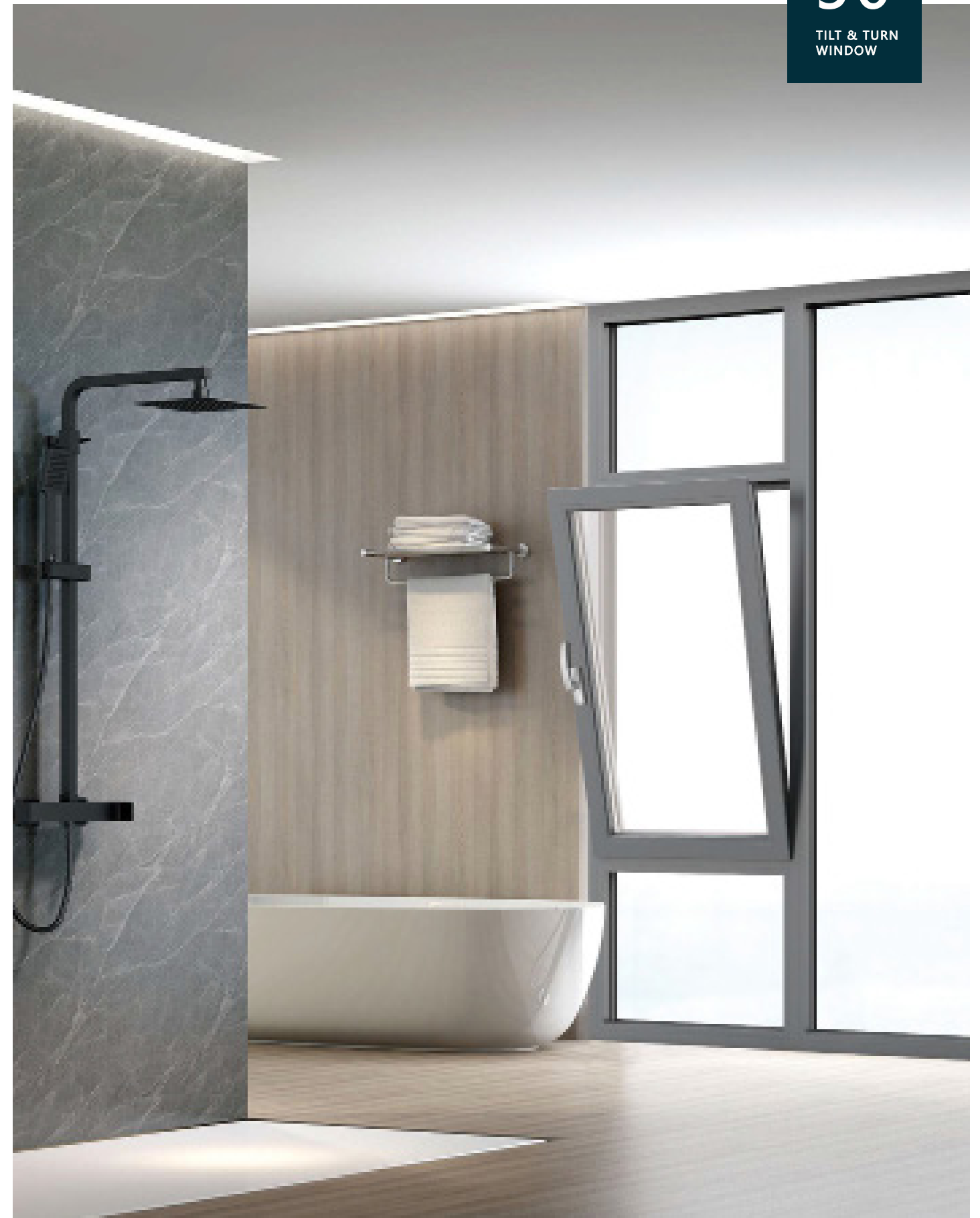
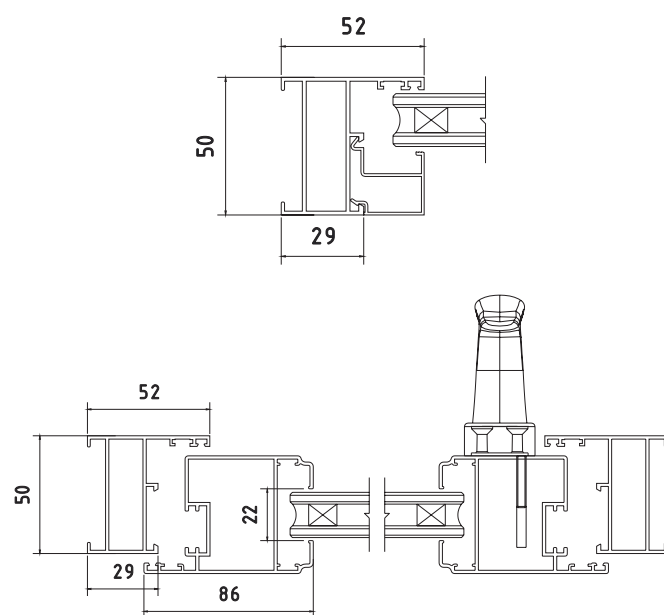


Water tightness:  
**350~500Pa**



Sound insulation  
performance:  
**RW UP TO 32dB**

## EXAMPLE PICTURE:



ITEM NO:  
WA-55-04

SERIES:  
55mm

SURFACE FINISH:  
Powder coating/PVDF coating

GLASS SPECIFICATION :  
5+12A+5mm insulated tempered glass

ALU THICKNESS:  
1.4/1.8 mm

#### BASIC PARAMETERS:



Thermal insulation coefficient:  
UW 2.2~2.8 W/(M²·K)



Wind pressure resistance:  
3000~3500Pa



Air tightness:  
LEVEL 6~7

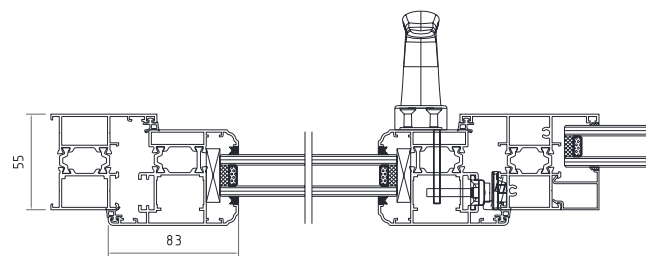


Water tightness:  
450~600Pa



Sound insulation  
performance:  
33~38dB

#### EXAMPLE PICTURE:



#### EXAMPLE PICTURE







# 108 SERIES TILT & TURN WINDOW

ITEM NO:  
WA-108-04

SERIES:  
108mm

SURFACE FINISH:  
Powder coating/ PVDF coating

GLASS SPECIFICATION :  
5+27A+5mm or 5+12A+5+12A+5mm insulated tempered glass

ALU THICKNESS:  
1.4/1.6/2.0mm

HARDWARE:  
China top brand

OPTIONAL CONFIGURATIONS:  
Window Screen / Grille

## BASIC PARAMETERS:



Thermal insulation coefficient:  
**UW 1.2~1.8 W/(M²·K)**



Wind pressure resistance:  
**4500~6000Pa**



Air tightness:  
**LEVEL6**

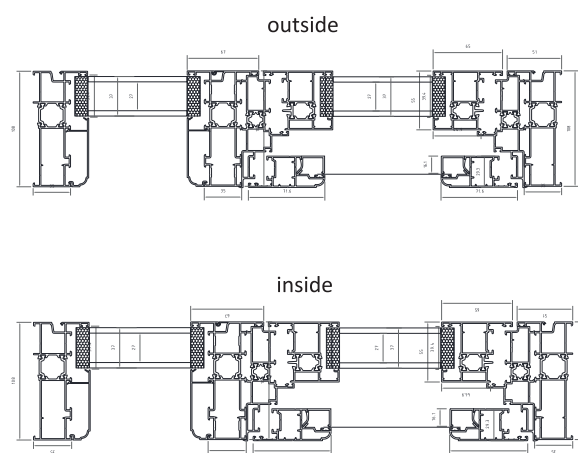


Water tightness:  
**500~700Pa**



Sound insulation  
performance:  
**40~45dB**

## EXAMPLE PICTURE:



108  
TILT & TURN  
WINDOW







# 188 SERIES ALUMINUM LIFT-TRUN SLIDING DOOR

ITEM NO:  
WA-LTS188

SERIES:  
188mm

SURFACE FINISH:  
Powder coating/PVDF coating

GLASS SPECIFICATION :  
5+20A+5mm, 6+1.52pvb+6mm, 5+1.52+5+1.52+5mm tempered safty glass

PROFILE THICKNESS:  
1.8/2/3mm thickness

HARDWARE:  
HOPO, SIEGENIA,OPK

## BASIC PARAMETERS:



Thermal insulation coefficient:  
**UW 3.2-3.8 W/(M²·K)**



Wind pressure resistance:  
**≥3500Pa**



Air tightness:  
**LEVEL 4-5**

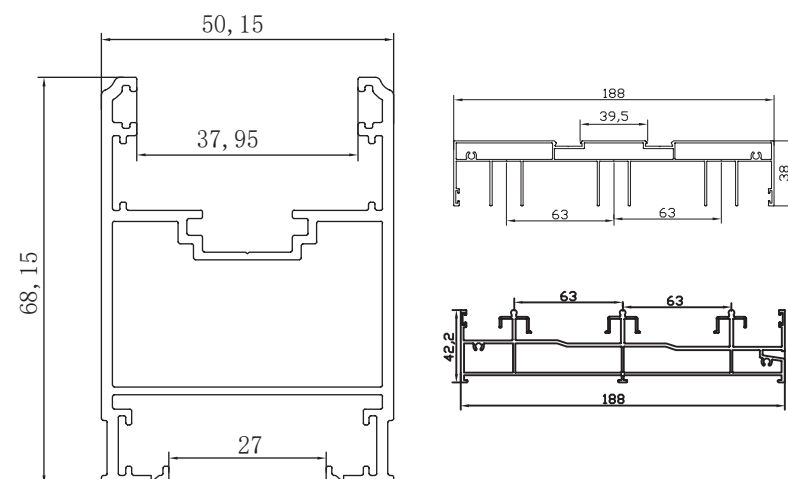


Water tightness:  
**350~600Pa**



Sound insulation  
performance:  
**RW 35~39dB**

## EXAMPLE PICTURE:



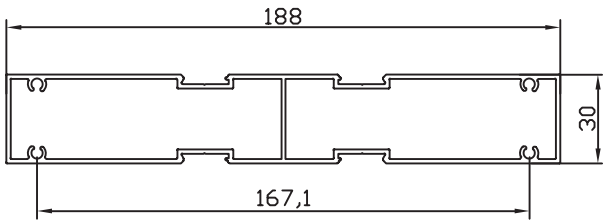
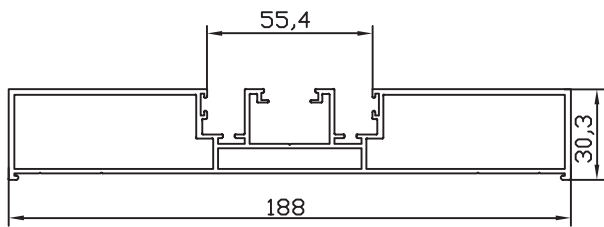
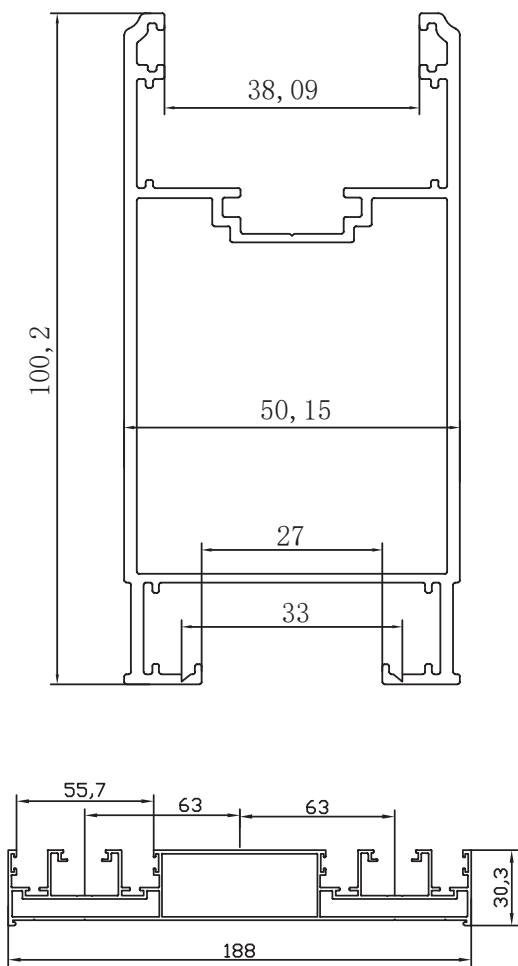
# 188

ALUMINUM LIFT-TRUN  
SLIDING DOOR

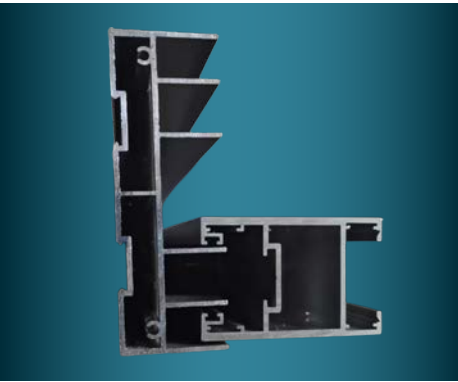




# 188 SERIES ALUMINUM LIFT-TRUN SLIDING DOOR



## PRODUCT DETAILS





ITEM NO:  
WA-KFC100

SERIES:  
100 SERIES

SURFACE FINISH:  
Powder coating/PVDF coating

GLASS SPECIFICATION :  
5+12A+5mm, 5+1.52pvb+5mm tempered safty glass

PROFILE THICKNESS:  
2.0mm or 3.0mm

HARDWARE:  
HOPO, SIEGENIA,KINLONG,LACORONA,DORMAKABA

### BASIC PARAMETERS:



Thermal insulation coefficient:  
**UW4.2~5.5 W/(M²·K)**



Wind pressure resistance:  
**2500-3500Pa**



Air tightness:  
**LEVEL 3-4**

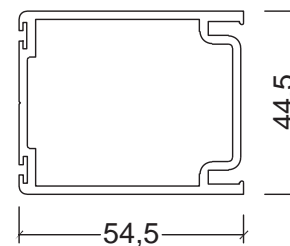
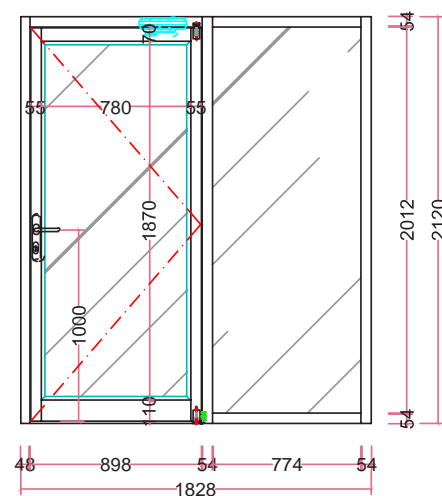


Water tightness:  
**250~350Pa**



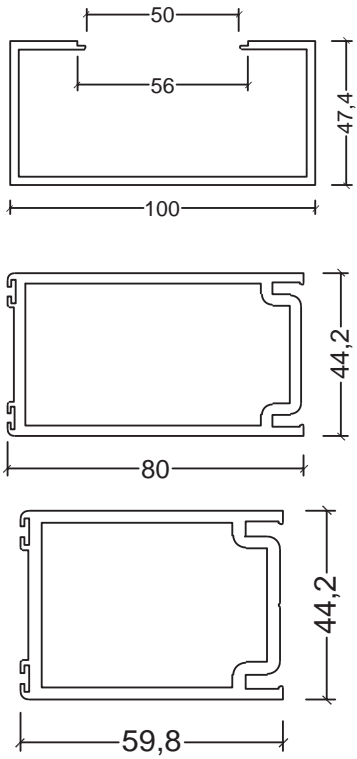
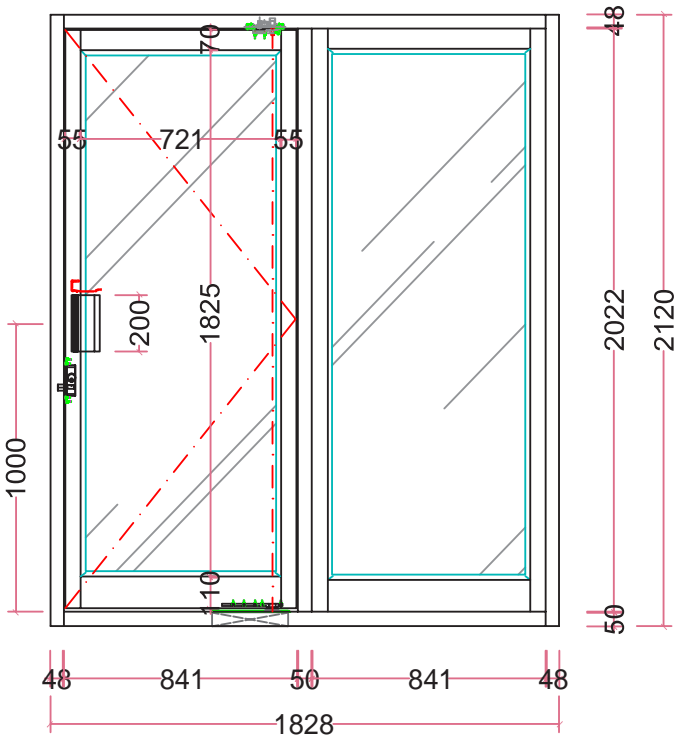
Sound insulation  
performance:  
**RW 32dB**

### EXAMPLE PICTURE:





100 SERIES KFC PIVOT DOOR







# 90 SERIES AUSTRALIA STANDARD WINDOW AND DOOR

ITEM NO:  
WA-90-01

SERIES:  
90mm

SURFACE FINISH:  
Powder coating/PVDF coating

GLASS SPECIFICATION :  
5+12A+5mm insulated tempered glass (Low-e glass available)

ALU THICKNESS:  
1.4mm

HARDWARE:  
Australia Doric/ China Kinlong

FIN:  
Wooden Fin

## BASIC PARAMETERS:



Thermal insulation coefficient:  
**UW 4.0-4.8 W/(M²·K)**



Wind pressure resistance:  
**3500-4500Pa**



Air tightness:  
**LEVEL5**



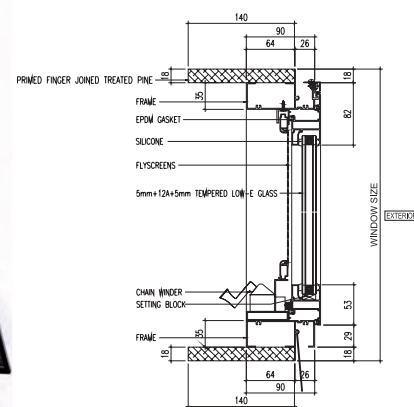
Water tightness:  
**350Pa**



Sound insulation  
performance:  
**35-40dB**

## EXAMPLE PICTURE:

AWNING WINDOW  
WITH TIMBER REVEAL



# 90

AUSTRALIA STANDARD  
WINDOW AND DOOR







# 100 SERIES AUSTRALIA STANDARD WINDOW AND DOOR

ITEM NO:  
WA-100-01

SERIES:  
100mm

SURFACE FINISH:  
Powder coating/PVDF coating

GLASS SPECIFICATION :  
5+9A+5mm, 5+20A+5mm insulated tempered glass (Low-e glass available)

ALU THICKNESS:  
1.4mm

HARDWARE:  
Australia Doric/ China Kinlong

FIN:  
Aluminum Fin

## BASIC PARAMETERS:



Thermal insulation coefficient:  
**4.0~4.8 W/(M²·K)**



Wind pressure resistance:  
**3500-4500Pa**



Air tightness:  
**LEVEL5**



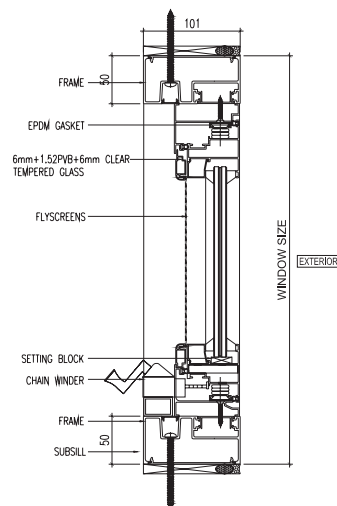
Water tightness:  
**350Pa**



Sound insulation  
performance:  
**35-40dB**

## EXAMPLE PICTURE:

AWNING WINDOW  
WITH TIMBER REVEAL



100  
AUSTRALIA STANDARD  
WINDOW AND DOOR





**ITEM NO:**

WA-AUS100

**SERIES:**

100 Series

**SURFACE FINISH:**

Powder coating/PVDF coating

**GLASS SPECIFICATION :**

5+9A+5mm, 5+12A+5mm, 5+0.76pvb+5+0.76pvb+5mm tempered safty glass

**PROFILE THICKNESS:**

1.4mm, 1.8mm, 2.0mm

**HARDWARE:**

HOPO, SIEGENIA

**BASIC PARAMETERS:**

Thermal insulation coefficient:  
**UW 3.3-4.2 W/(M²·K)**



Wind pressure resistance:  
**2500-3500Pa**



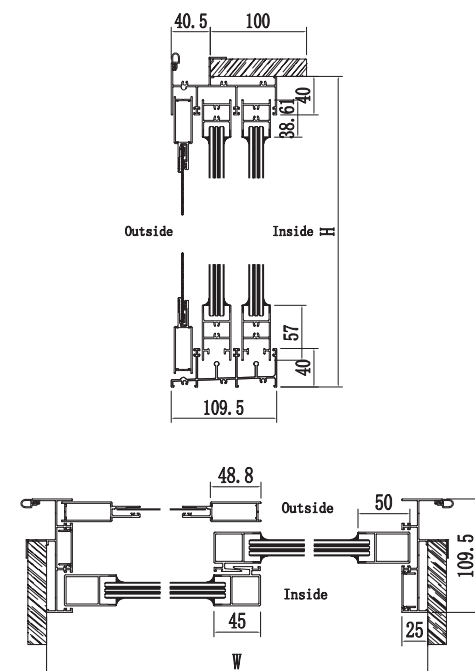
Air tightness:  
**LEVEL 3-4**



Water tightness:  
**≥250Pa**



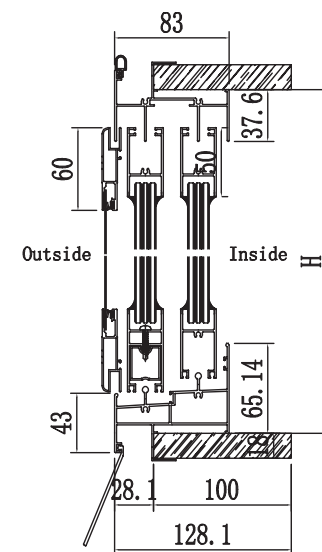
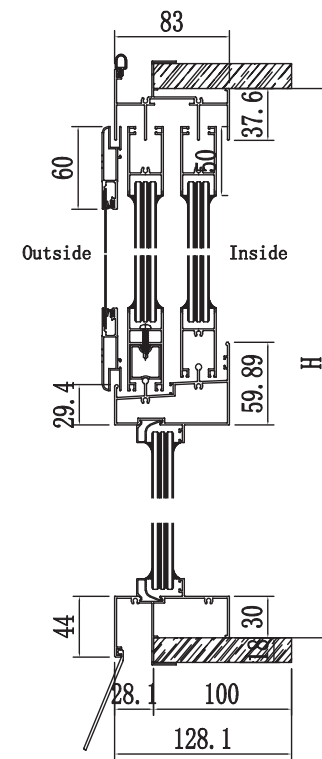
Sound insulation  
performance:  
**RW 28~32dB**

**EXAMPLE PICTURE:**





# AUSTRALIA STANDARD WINDOW AND DOOR



AUSTRALIA  
STANDARD





## ITEM NO:

WA-AUS132

## SERIES:

110MM SERIES

## SURFACE FINISH:

Powder coating/PVDF coating

## GLASS SPECIFICATION :

5+9A+5mm, 5+12A+5mm, 5+0.76pvb+5+0.76pvb+5mm tempered safty glass

## PROFILE THICKNESS:

1.4mm, 1.8mm, 2.0mm

## HARDWARE:

HOPO, SIEGENIA

## BASIC PARAMETERS:



Thermal insulation coefficient:  
UW 3.3-4.2 W/(M²·K)



Wind pressure resistance:  
2000-3500Pa



Air tightness:  
LEVEL4

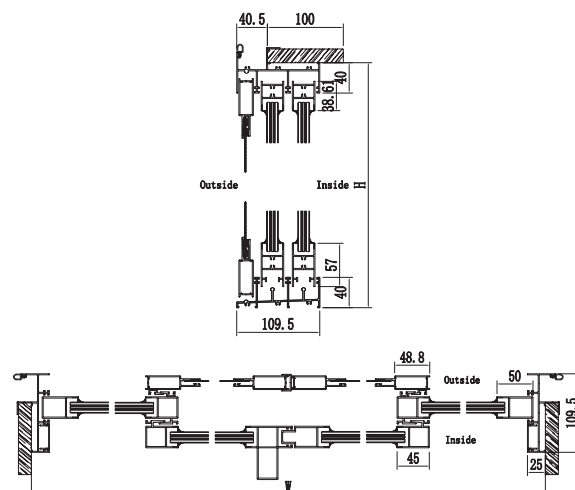
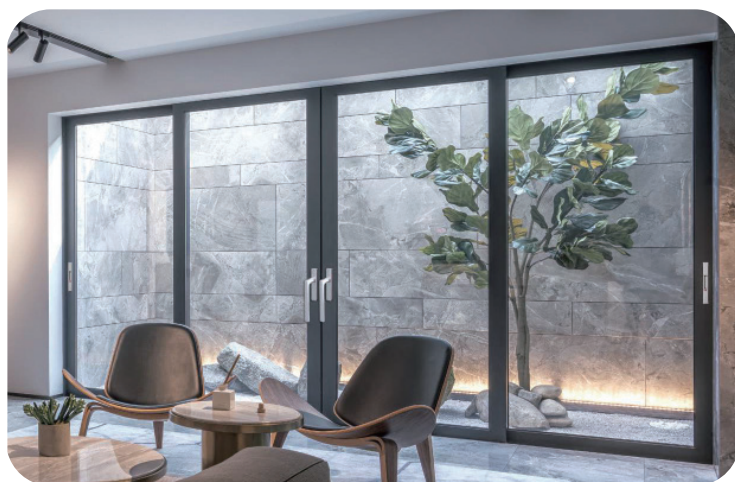


Water tightness:  
350Pa



Sound insulation  
performance:  
RW 28-32dB

## EXAMPLE PICTURE:







# 182 SERIES AUSTRALIA 6PANEL SLIDING DOOR

## ITEM NO:

WA-AUS182

## SERIES:

182 Sliding Series

## SURFACE FINISH:

Powder coating/PVDF coating

## GLASS SPECIFICATION :

5+9A+5mm, 5+12A+5mm, 5+0.76pvb+5+0.76pvb+5mm tempered safty glass

## PROFILE THICKNESS:

1.4mm, 1.8mm, 2.0mm

## HARDWARE:

HOPO, SIEGENIA

## BASIC PARAMETERS:



Thermal insulation coefficient:  
**UW 3.5-4.8 W/(M²·K)**



Wind pressure resistance:  
**3500Pa**



Air tightness:  
**LEVEL 4**

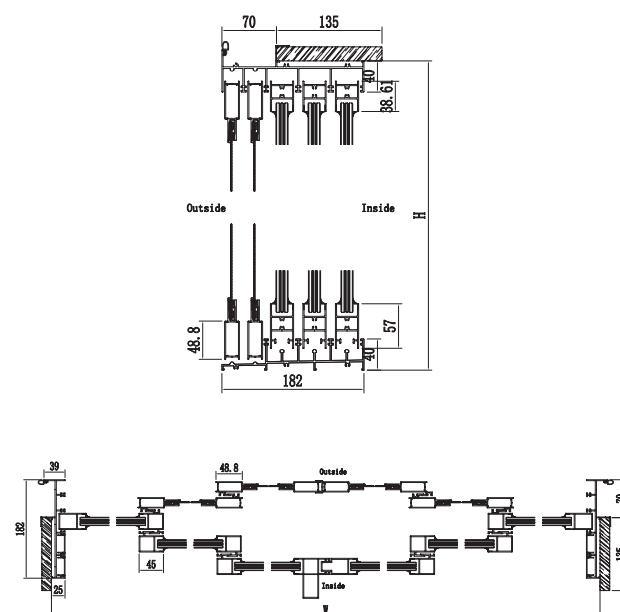


Water tightness:  
**500Pa**



Sound insulation  
performance:  
**RW 30-35dB**

## EXAMPLE PICTURE:



# 182

AUSTRALIA 6PANEL  
SLIDING DOOR







# AWING WINDOW WITH FLYSCREEN THERMAL BREAK

ITEM NO:

WA-WA65

SERIES:

65 Series Thermal Break

SURFACE FINISH:

Powder coating/PVDF coating

GLASS SPECIFICATION :

5+9A+5mm, 5+12A+5mm, 5+0.76pvb+5+0.76pvb+5mm tempered safty glass

PROFILE THICKNESS:

1.4mm, 18.mm

HARDWARE:

HOPO, SIEGENIA

BASIC PARAMETERS:



Thermal insulation coefficient:  
 $UW \geq 2.5 \sim 3.2 \text{ W/(M}^2 \cdot \text{K)}$



Wind pressure resistance:  
2500-3000Pa



Air tightness:  
LEVEL6

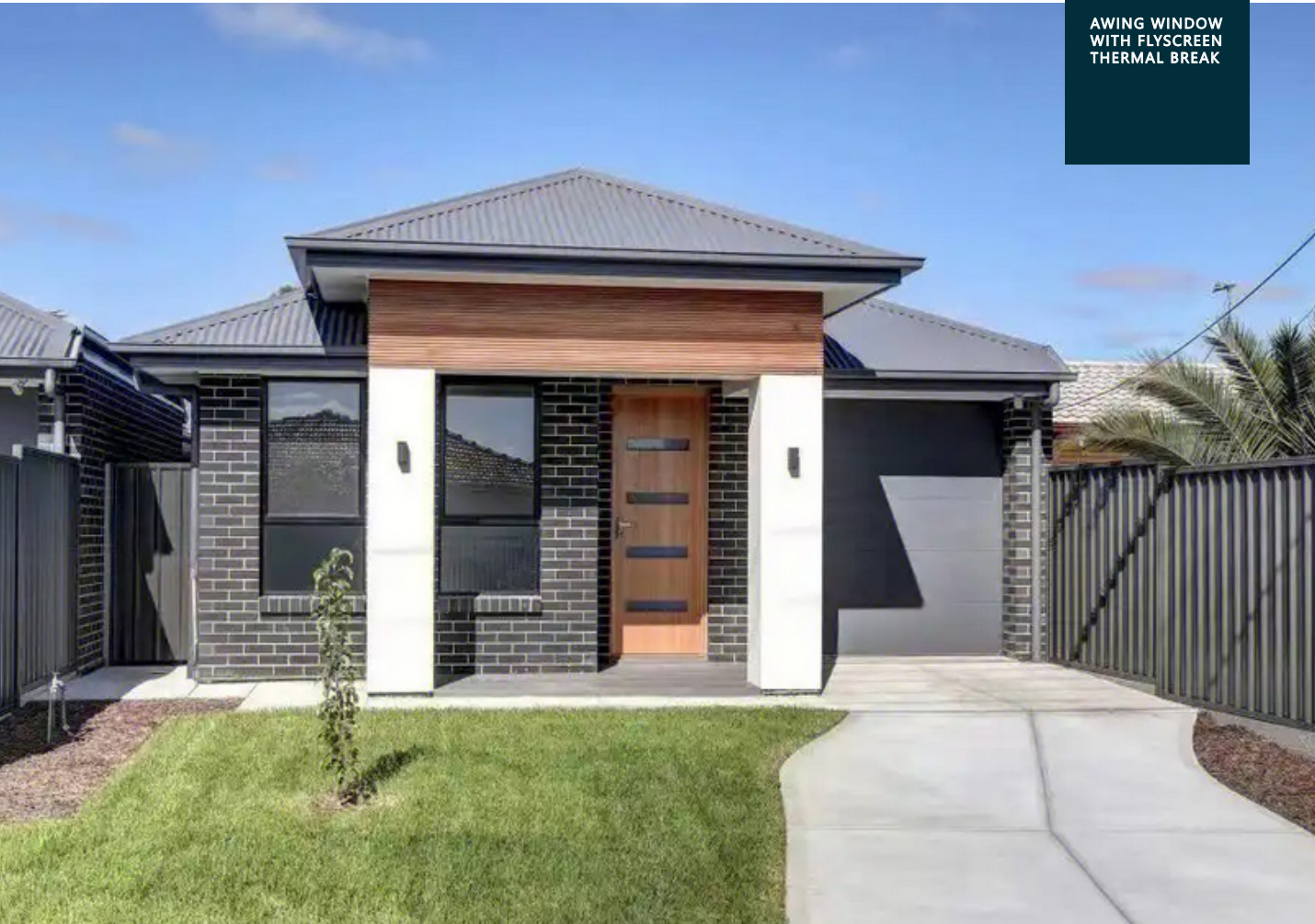
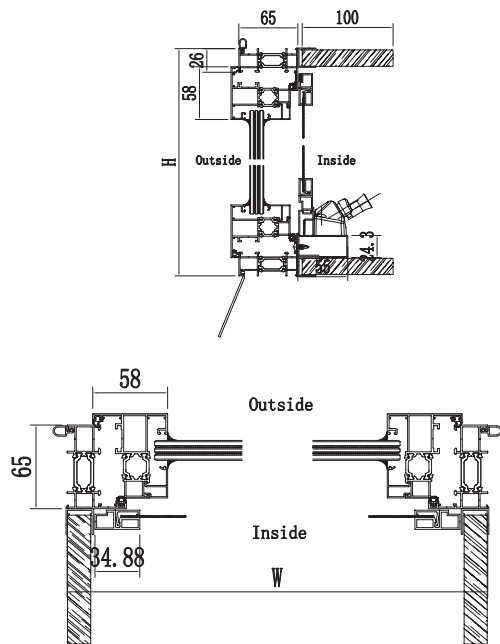


Water tightness:  
300Pa~500Pa



Sound insulation  
performance:  
RW 30-35dB

EXAMPLE PICTURE:



AWING WINDOW  
WITH FLYSCREEN  
THERMAL BREAK





## NFRC CERTIFICATE

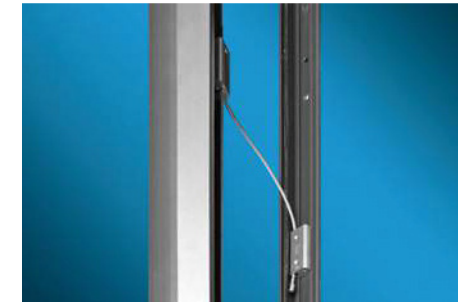
NFRC Certificate(National Fenestration Rating Council),It is a non-profit organization dedicated to promoting the continuous improvement of windows, doors and skylights to make buildings more comfortable and energy efficient.



- U-Factor (Orange area) indicates the U value of windows and doors, which is the thermal insulation value. The range is: 0.20-1.20. The lower, the better.
- Visible Transmittance (Green area) Range: 0-1, the higher, the better.
- Solar Heat Gain Coefficient (Purple area) A parameter that measures the increase in interior temperature due to light,the range is: 0-1, the lower the better.
- Air Leakage (Blue area) Measures the value of air entering the interior, range: 0.1-0.3, the lower the better.



## PRODUCT DETAILS







# K80 SERIES CASEMENT WINDOW

ITEM NO:  
WA-WK80

## PROFILE THICKNESS::

Window fan thickness:1.8mm    Door frame thickness:1.8mm    Door fan thickness:2.0mm

## SPECIFICATIONS:

Fan width:400mm-800mm    Fan height:400mm-1900mm    Maximum fan load: 60kg

## GLASS SPECIFICATION :

5mm+16A+5mm, 5mm+12A+5mm hollow, broken edge can be made 8mm+27A+8mm, also can be made double glass 5mm+27A+5mm

## INSULATION STRIP SIZE:

35.3mm multi-cavity insulation strip

## BASIC PARAMETERS:



Thermal insulation coefficient:  
**UW0.8~1.8 W/(M²·K)**



Wind pressure resistance:  
**4500-5000Pa**



Air tightness:  
**LEVEL8**

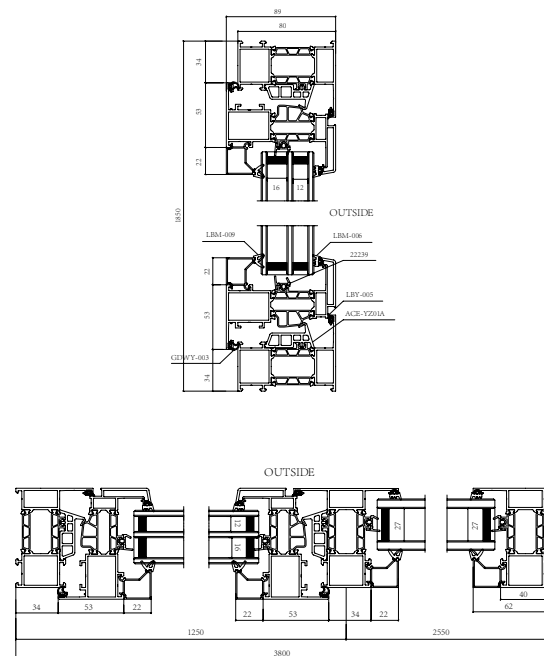


Water tightness:  
**500-700Pa**



Sound insulation  
performance:  
**RW up to 37dB**

## EXAMPLE PICTURE:





ITEM NO:  
WA-DK80

PROFILE THICKNESS::

Window fan thickness: 1.8mm    Door frame thickness: 1.8mm    Door fan thickness: 2.0mm

SPECIFICATIONS:

Fan width:400mm-800mm    Fan height:400mm-1900mm    Maximum fan load: 60kg

GLASS SPECIFICATION :

5mm+16A+5mm, 5mm+12A+5mm hollow, broken edge can be made 8mm+27A+8mm

INSULATION STRIP SIZE:

35.3mm multi-cavity insulation strip

BASIC PARAMETERS:



Thermal insulation coefficient:  
**UW1.1~1.8 W/(M²·K)**



Wind pressure resistance:  
**4500-5000Pa**



Air tightness:  
**LEVEL4-5**

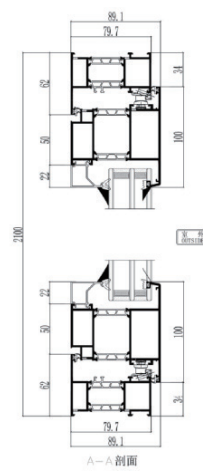
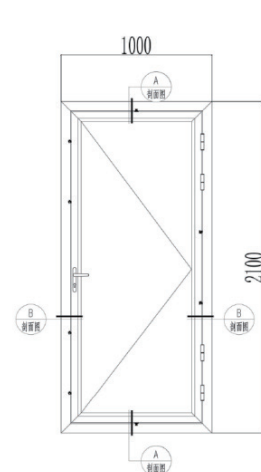
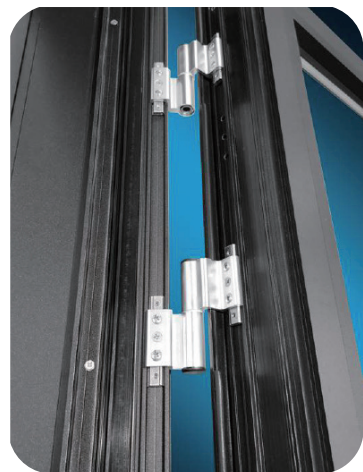


Water tightness:  
**+600Pa**



Sound insulation  
performance:  
**RW UP TO 37dB**

EXAMPLE PICTURE:





**ITEM NO:**

WA-SD145

**PROFILE THICKNESS:**

1.4mm, 1.8mm, 2.0mm thickness

**SPECIFICATIONS:**

Fan width: 400mm-800mm

Fan height: 400mm-2000mm

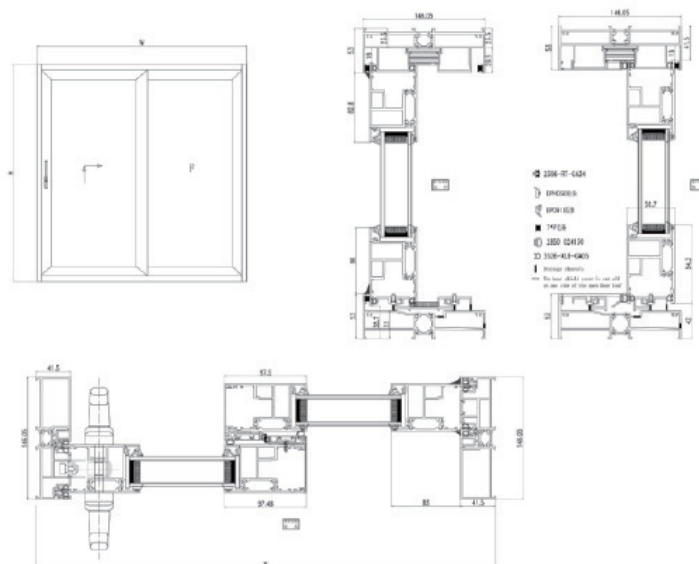
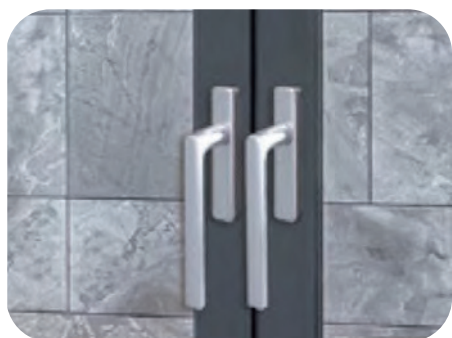
Maximum fan load: 60kg

**GLASS SPECIFICATION :**

5mm+16A+5mm, 5mm+12A+5mm hollow, broken edge can be made 8mm+27A+8mm

**INSULATION STRIP SIZE:**

35.3mm multi-cavity insulation strip

**BASIC PARAMETERS:**Thermal insulation coefficient:  
**UW1.7W/m²K**Wind pressure resistance:  
**+3500Pa**Air tightness:  
**LEVEL5**Water tightness:  
**+600Pa**Sound insulation  
performance:  
**RW UP TO 37dB****EXAMPLE PICTURE:**



**ITEM NO:**

WA-BFK80

**PROFILE THICKNESS::**

1.8mm, 2.0mm

**SPECIFICATIONS:**

Fan width:400mm-800mm

Fan height:400mm-1900mm

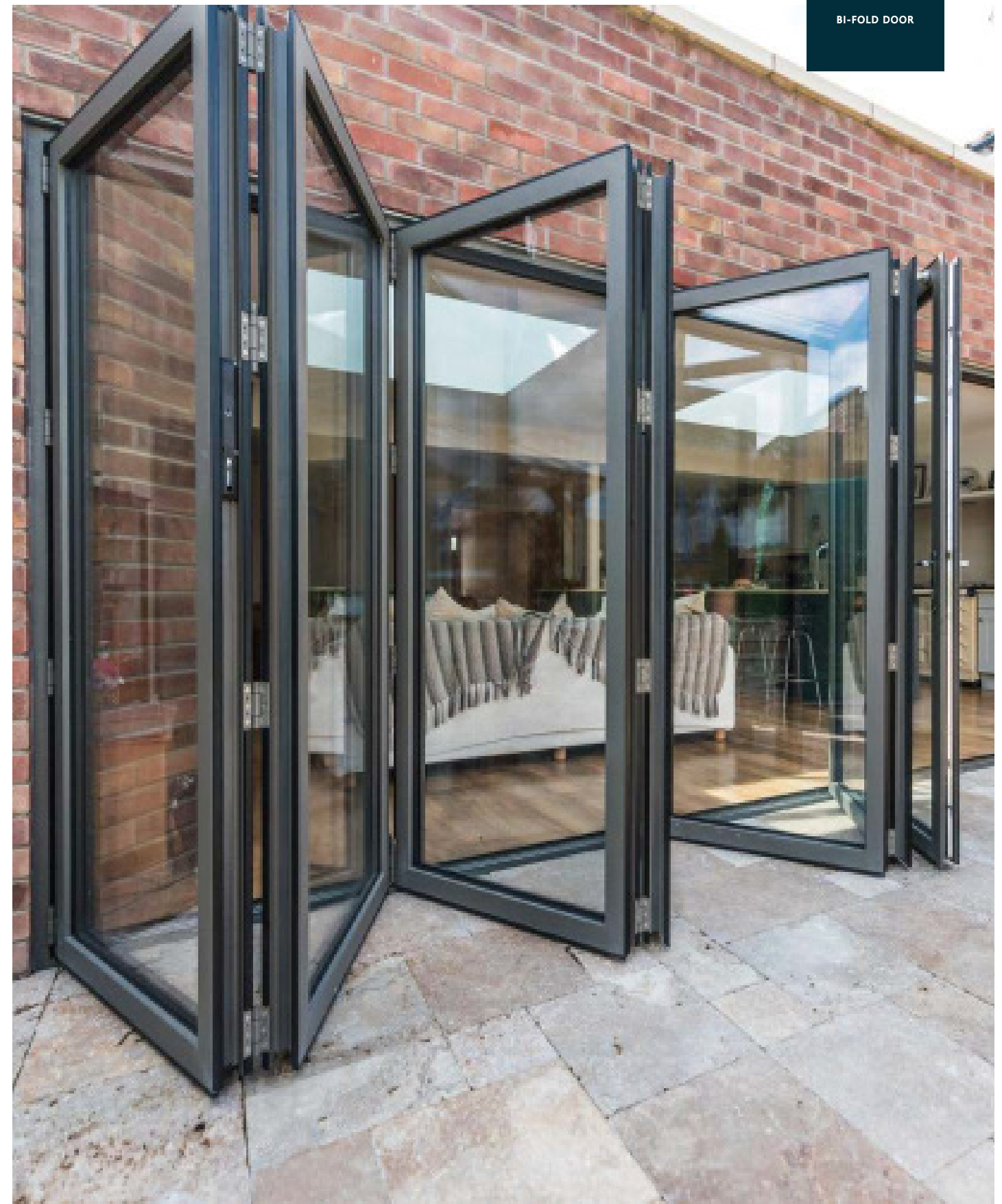
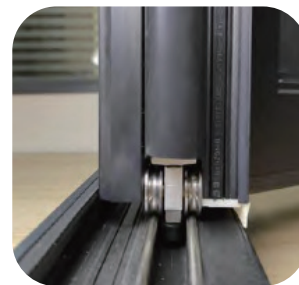
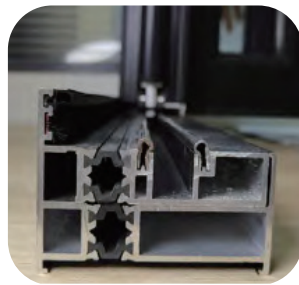
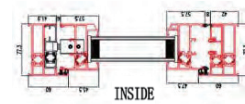
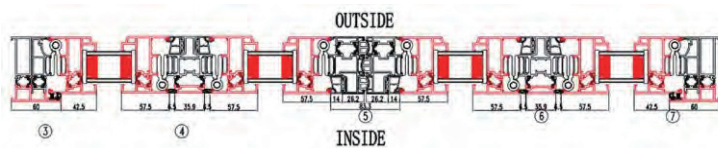
Maximum fan load: 60kg

**GLASS SPECIFICATION :**

5mm+16A+5mm, 5mm+12A+5mm hollow, broken edge can be made 8mm+27A+8mm

**INSULATION STRIP SIZE:**

35.3mm multi-cavity insulation strip

**BASIC PARAMETERS:**Thermal insulation coefficient:  
**UW1.7W/m<sup>2</sup>K**Wind pressure resistance:  
**+3500Pa**Air tightness:  
**LEVEL5**Water tightness:  
**+600Pa**Sound insulation  
performance:  
**RW UP TO 37dB****EXAMPLE PICTURE:**





# 125 SERIES SILM SLIDING DOOR



ITEM NO:  
WA-UTS125


PROFILE THICKNESS::  
1.8mm, 2.0mm

SPECIFICATIONS:  
Fan width:400mm-800mm      Fan height:400mm-2000mm      Maximum fan load: 65kg


GLASS SPECIFICATION :  
5mm+9A+5mm

INSULATION STRIP SIZE:  
22mm multi-cavity insulation strip


BASIC PARAMETERS:




Thermal insulation coefficient:  
**UW1.6W/m²K**




Wind pressure resistance:  
**+2000Pa**



Air tightness:  
**LEVEL5**

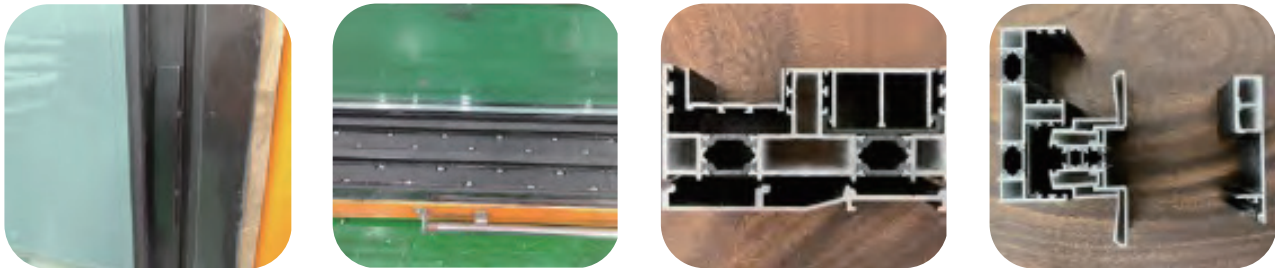
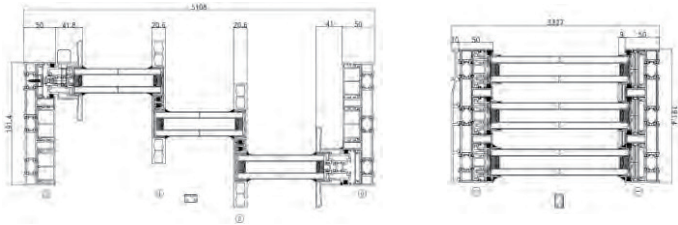


Water tightness:  
**+330Pa**



Sound insulation performance:  
**RW UP TO 37dB**

EXAMPLE PICTURE:







# C80 SERIES CASEMENT DOOR

ITEM NO:  
WA-C80

PROFILE THICKNESS:  
1.6mm, 1.8mm, 2.0mm

SPECIFICATIONS:  
Fan width:400mm-800mm      Fan height:400mm-1900mm      Maximum fan load: 60kg

GLASS SPECIFICATION :  
5mm+16A+5mm+12A+5mm,5mm+27A+5mm hollow, broken edge can be made 8mm+27A+8mm

INSULATION STRIP SIZE:  
33mm multi-cavity insulation strip

## BASIC PARAMETERS:



Thermal insulation coefficient:  
**UW1.5-2.2W/m²K**



Wind pressure resistance:  
**+4500Pa**



Air tightness:  
**LEVEL5-6**

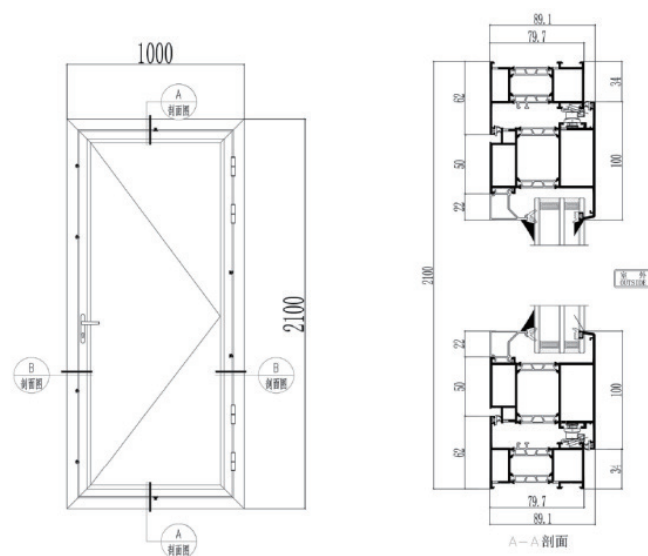


Water tightness:  
**+800Pa**



Sound insulation  
performance:  
**RW UP TO 37dB**

## EXAMPLE PICTURE:



# CANADA STANDARD WINDOWS AND DOORS



The CSA certification is one of the most well-known product safety approval standard in the world and is widely accepted and recognized by the global market, especially in North America. CSA International is licensed by the U.S. Occupational Safety and Health Administration (OSHA), listed as a U.S. Nationally Recognized Laboratory (NRTL), and authorized by the Standards Council of Canada (SCC). In the United States and Canada, the CSA mark is recognized by regulatory authorities in health and safety, electrical, gas, construction, bathroom and many other fields. Therefore, CSA is the threshold of the Canadian market. CSA certified windows and doors are the same product as NFRC certified.





## ITEM NO:

WA-SD150

## PROFILE THICKNESS:

1.4mm, 1.8mm, 20.mm

## SPECIFICATIONS:

Fan width:400mm-800mm

Fan height:400mm-2000mm

Maximum fan load: 650kg

## GLASS SPECIFICATION :

5mm+12A+5mm+12A+5mm, 5mm+16A+5mm, 5mm+27A+5mm,

## INSULATION STRIP SIZE:

20-33mm multi-cavity insulation strip

## BASIC PARAMETERS:



Thermal insulation coefficient:  
**UW1.7-2.5W/m²K**



Wind pressure resistance:  
**+3600Pa**



Air tightness:  
**LEVEL 5-6**

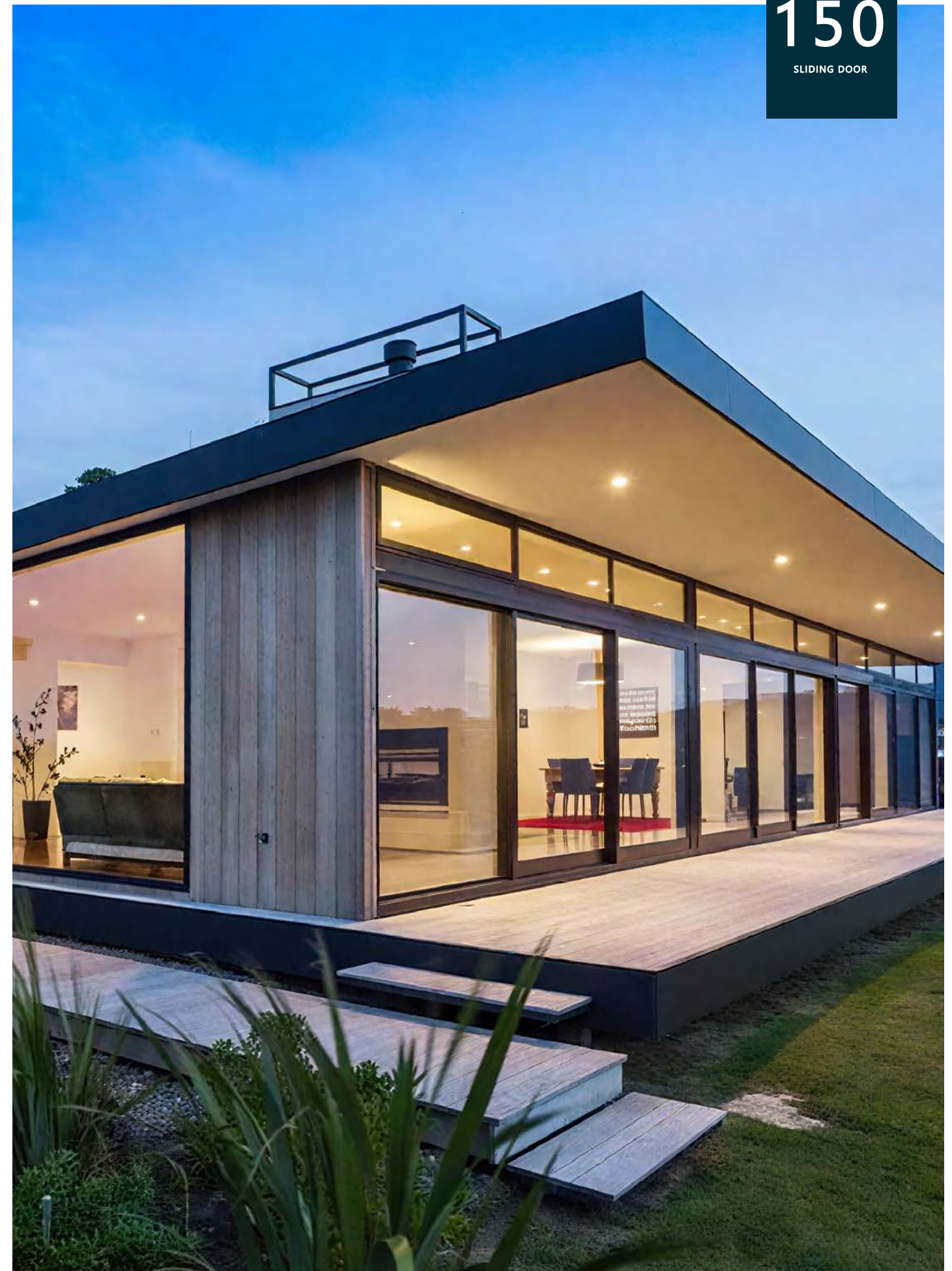
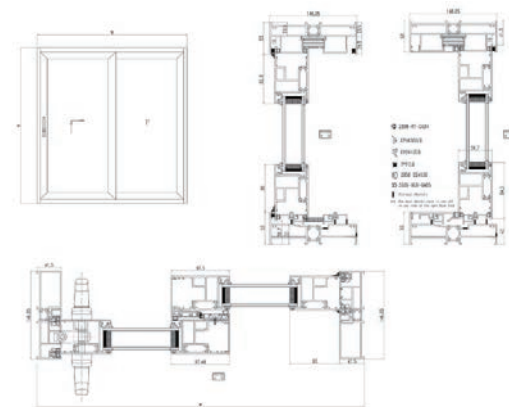


Water tightness:  
**+600Pa**



Sound insulation  
performance:  
**RW UP TO 37dB**

## EXAMPLE PICTURE:







# 50 SERIES ALUMINUM LOUVER

ITEM NO:

WA-50-01

SERIES:

Frame about 50mm

SURFACE FINISH:

Powder coating/PVDF

LOUVER THICKNESS :

0.8mm, 1.0mm, 1.1mm, 1.2mm

HARDWARE:

China brand

STYLE:

Fixed Louver/ close-open louver

BASIC PARAMETERS:



Pressure-bearing capacity:  
**+500 PA (STATIC PRESSURE)**



Wind pressure resistance:  
**≤0.1 (AT 45° BLADE ANGLE, MINIMAL AIRFLOW DISRUPTION)**



Fire resistance:  
**CLASS A**



Rain Protection Performance :  
**SIMULATES RAIN (E.G., 350 PA WATER PRESSURE FOR 15 MINS).**

EXAMPLE PICTURE:







# 100 SERIES ALUMINUM LOUVER

ITEM NO:

WA-100-01

SERIES:

100mm

SURFACE FINISH:

Powder coating

LOUVER THICKNESS :

0.8mm, 1.0mm, 1.1mm, 1.2mm

HARDWARE:

China top brand

STYLE:

Fixed Louver/ close-open louver

BASIC PARAMETERS:



Pressure-bearing capacity:  
**+500 PA (STATIC PRESSURE)**



Wind pressure resistance:  
**≤0.1 (AT 45° BLADE ANGLE, MINIMAL AIRFLOW DISRUPTION)**



Fire resistance:  
**CLASS A**



Rain Protection Performance :  
**SIMULATES RAIN (E.G., 350 PA WATER PRESSURE FOR 15 MINS).**

EXAMPLE PICTURE:



# 100

ALUMINUM  
LOUVER







# 100 SERIES ALUMINUM GLASS LOUVER

ITEM NO:  
WA-100

SERIES:  
100mm

SURFACE FINISH:  
Powder coating

GLASS SPECIFICATION :  
6mm tempered glass

ALU THICKNESS :  
2.0mm

HARDWARE:  
China top brand

BASIC PARAMETERS:



Pressure-bearing capacity:  
**+1500 Pa (STATIC PRESSURE)**



Wind pressure resistance :  
**≤0.1 (AT 45° BLADE ANGLE, MINIMAL AIRFLOW DISRUPTION)**

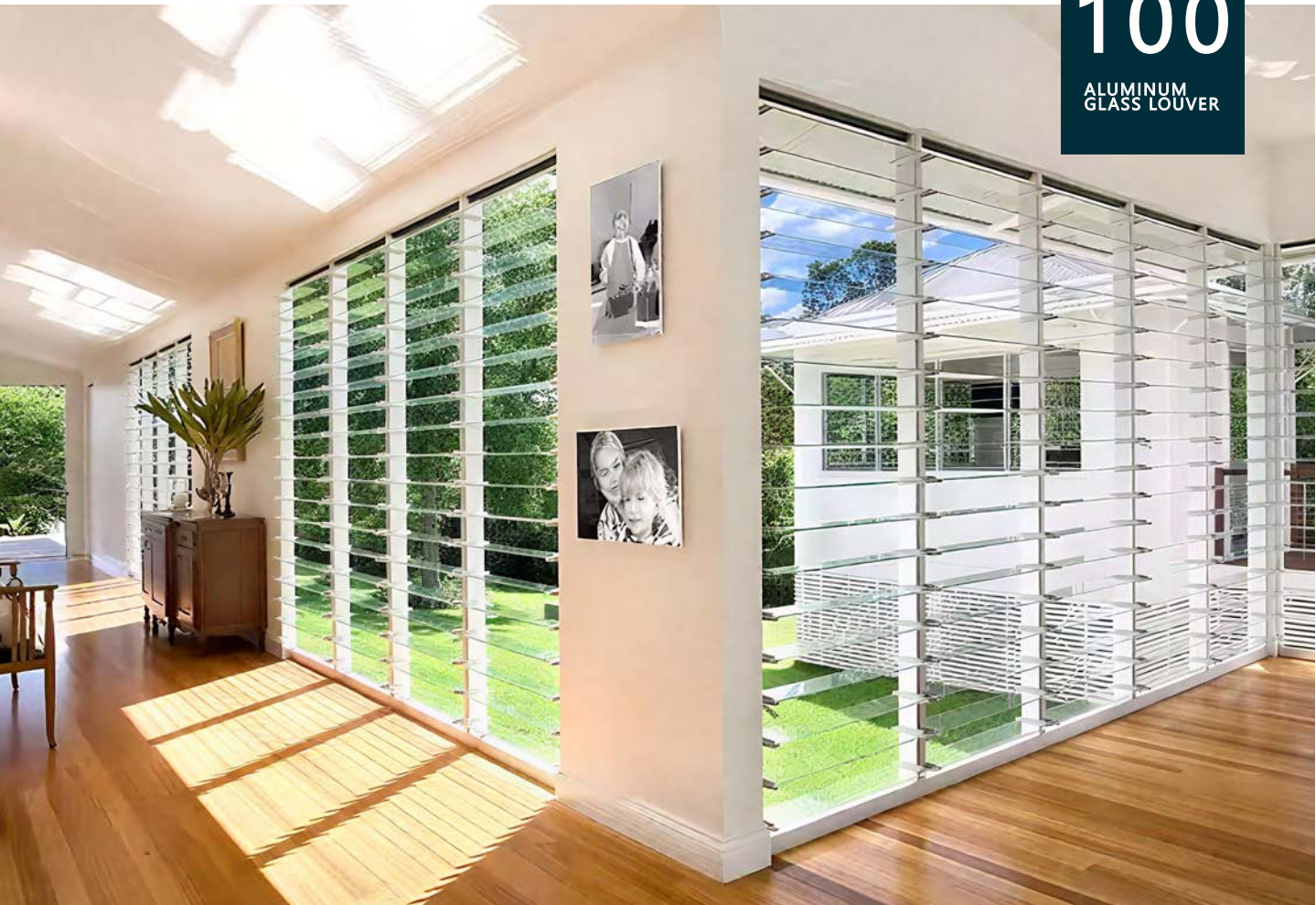


Fire resistance:  
**CLASS A**



Rain Protection Performance :  
**SIMULATES RAIN (E.G., 350 Pa WATER PRESSURE FOR 15 MINS).**

EXAMPLE PICTURE:



100  
ALUMINUM  
GLASS LOUVER







# 83 SERIES HUNG WINDOW

ITEM NO:  
WA-83-01

SERIES:  
83mm

SURFACE FINISH:  
Powder coating

GLASS SPECIFICATION :  
5+12A+5mm in sulated tempered glass


ALU THICKNESS :  
1.4/1.6mm

HARDWARE:  
Covey USA

TYPE:  
Single Hung/ Double Hung


ALUMINUM PROFILE:  
Thermal break/ Non-thermal break


THERMAL BREAK BASIC PARAMETERS:

 Thermal insulation coefficient:  
UW 1.8~2.5 W/(M²·K)

 Wind pressure resistance:  
3500-4500Pa

 Air tightness:  
LEVEL5-6

 Water tightness:  
500-700Pa

 Sound insulation  
performance:  
35-40dB

EXAMPLE PICTURE:





## ITEM NO:

WA-NF-01

## SURFACE FINISH:

Powder coating

## FUNCTION :

Supporting installation

## BASIC PARAMETERS:



Thermal insulation coefficient:  
UW 2.4~ 2.8W/(M<sup>2</sup>·K)



Wind pressure resistance:  
2500-3500Pa



Air tightness:  
LEVEL5-6



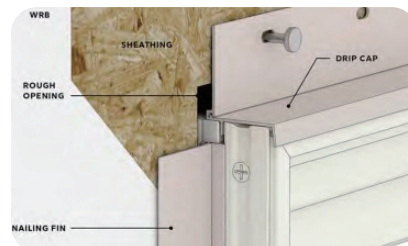
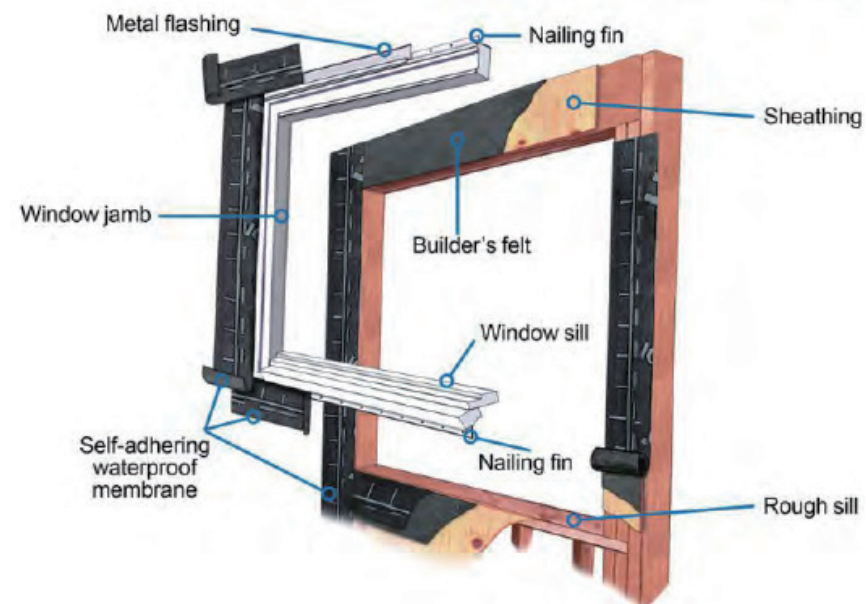
Water tightness:  
+600Pa



Sound insulation performance:  
32-38dB

## EXAMPLE PICTURE:

### WINDOW FRAME AND ROUGH OPENING





**ITEM NO:**

WA-50-01

**SERIES:**

50mm

**SURFACE FINISH:**

Powder coating/PVDF coating

**GLASS SPECIFICATION :**

5+12A+5mm insulated tempered glass

**ALU THICKNESS:**

1.4/1.6mm

**HARDWARE:**

China brand

**BASIC PARAMETERS:**

Thermal insulation coefficient:  
**UW 3.5~4.2 W/(M²·K)**



Wind pressure resistance:  
**3000Pa**



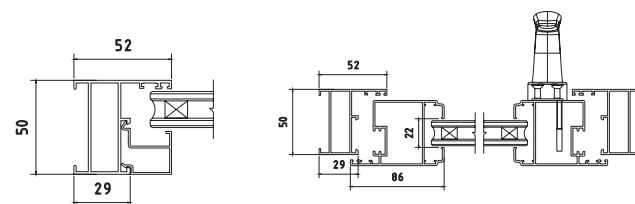
Air tightness:  
**LEVEL5**



Water tightness:  
**350~500Pa**



Sound insulation  
performance:  
**Rw 32~35dB**

**EXAMPLE PICTURE:**





# 55 SERIES CASEMENT DOOR

55  
CASEMENT  
DOOR

ITEM NO:  
WA-55-01

SERIES:  
55mm Thermal Break

SURFACE FINISH:  
Powder coating/PVDF coating

GLASS SPECIFICATION :  
5+12A+5mm insulated tempered glass

ALU THICKNESS:  
1.4/1.8mm

HARDWARE:  
China brand

BASIC PARAMETERS:



Thermal insulation coefficient:  
UW 1.8~2.5 W/(M²·K)



Wind pressure resistance:  
3000-4500Pa



Air tightness:  
LEVEL 6

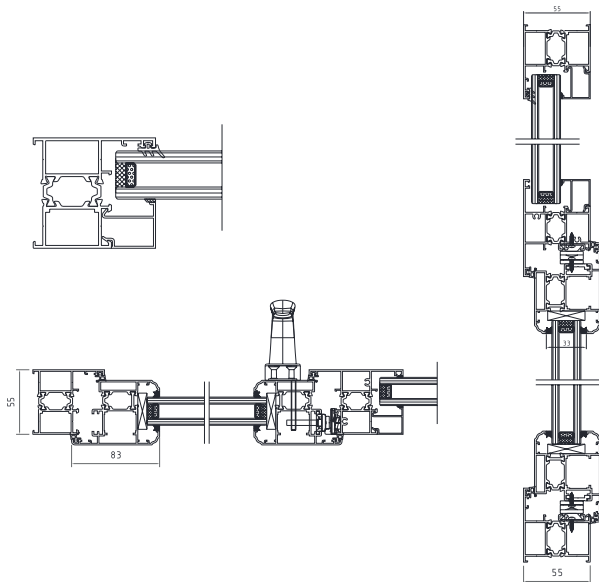


Water tightness:  
500-700Pa



Sound insulation  
performance:  
32-38dB

EXAMPLE PICTURE:







# 108 SERIES CASEMENT DOOR

ITEM NO:  
WA-108-01

SERIES:  
108mm

SURFACE FINISH:  
Powder coating/ PVDF coating

GLASS SPECIFICATION :  
5+27A+5mm insulated tempered glass

ALU THICKNESS:  
1.4/1.6/2.0mm

HARDWARE:  
China top brand

BASIC PARAMETERS:



Thermal insulation coefficient:  
**UW 0.8~1.5 W/(M²·K)**



Wind pressure resistance:  
**4500-7000Pa**



Air tightness:  
**LEVEL8**

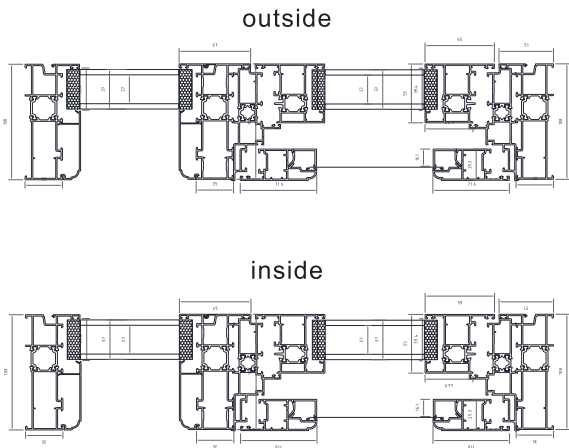


Water tightness:  
**800-1200Pa**



Sound insulation  
performance:  
**40-45dB**

EXAMPLE PICTURE:







# 80 SERIES CASEMENT WINDOW&AWNING WINDOW &TILT & TURN WINDOW

ITEM NO:  
WA-80-01

SERIES:  
80mm

SURFACE FINISH:  
Powder coating/ PVDF coating

GLASS SPECIFICATION :  
5+27A+5mm insulated tempered glass

ALU THICKNESS:  
2.0mm

HARDWARE:  
China top brand

ALUMINUM PROFILE:  
Thermal break/ Non-thermal break

## THERMAL BREAK BASIC PARAMETERS:



Thermal insulation coefficient:  
UW 1.4~2.0 W/(M<sup>2</sup>·K)



Wind pressure resistance:  
3500-5000Pa



Air tightness:  
LEVEL7

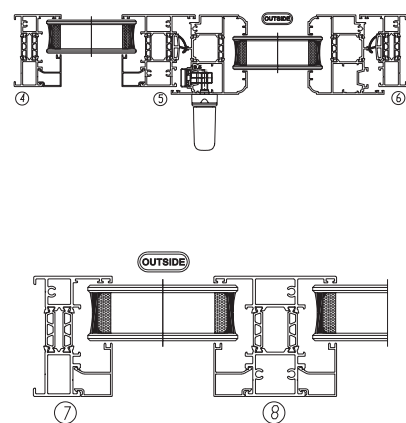
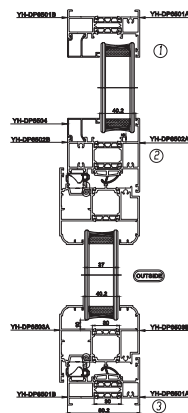


Water tightness:  
500-700Pa



Sound insulation  
performance:  
35-40dB

## EXAMPLE PICTURE:







# 120 SERIES SLIDING DOOR

ITEM NO:  
WA-120-01

SERIES:  
120 mm

SURFACE FINISH:  
Powder coating/ PVDF coating

GLASS SPECIFICATION :  
5+12A+5mm insulated tempered glass

ALU THICKNESS:  
1.6/2.0/1.8mm

HARDWARE:  
China top brand

ALUMINUM PROFILE:  
Thermal break/ Non-thermal break

## BASIC PARAMETERS:



Thermal insulation coefficient:  
**UW 1.2~1.8 W/(M²·K)**



Wind pressure resistance:  
**4500-6000Pa**



Air tightness:  
**LEVEL6**

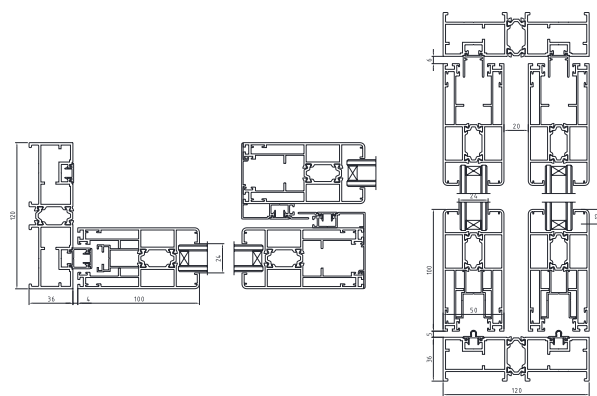


Water tightness:  
**700-900Pa**



Sound insulation  
performance:  
**38-42dB**

## EXAMPLE PICTURE:



120  
SLIDING  
DOOR







# 190 SERIES SLIDING DOOR

## ITEM NO:

WA-190-01

## SERIES:

190 mm

## SURFACE FINISH:

Powder coating/ PVDF coating

## GLASS SPECIFICATION :

5+12A+5mm insulated tempered glass

## ALU THICKNESS:

1.6/2.0/1.8mm

## HARDWARE:

China top brand

## ALUMINUM PROFILE:

Thermal break/ Non-thermal break

## BASIC PARAMETERS:



Thermal insulation coefficient:  
**UW 3.8~4.2 W/(M²·K)**



Wind pressure resistance:  
**5000Pa**



Air tightness:  
**LEVEL67**

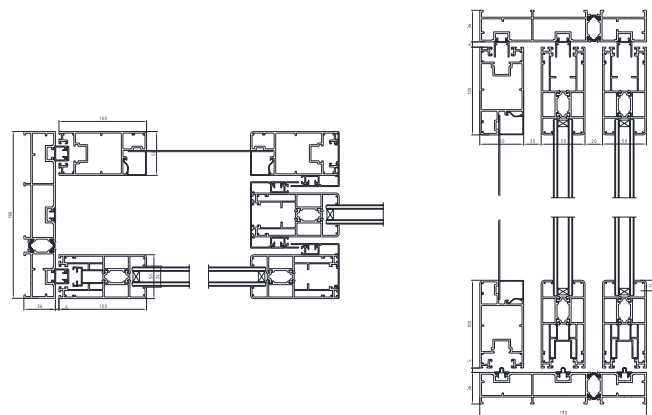


Water tightness:  
**200~350Pa**



Sound insulation  
performance:  
**30~33dB**

## EXAMPLE PICTURE:



190  
SLIDING  
DOOR







# 132 SERIES SLIDING DOOR

ITEM NO:  
WA-132-01

SERIES:  
132 mm

SURFACE FINISH:  
Powder coating/ PVDF coating

GLASS SPECIFICATION :  
5+12A+5mm insulated tempered glass

ALU THICKNESS:  
1.6/2.0mm

HARDWARE:  
China top brand

ALUMINUM PROFILE:  
Thermal break/ Non-thermal break

## BASIC PARAMETERS:



Thermal insulation coefficient:  
**0.9~1.6 W/(M²·K)**



Wind pressure resistance:  
**5500-7500Pa WITH STEEL BEAM**



Air tightness:  
**LEVEL6**

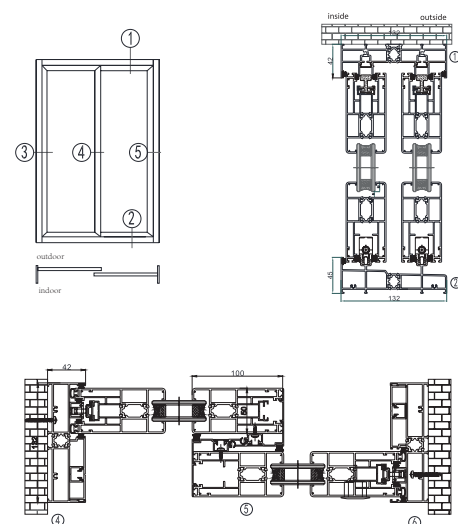


Water tightness:  
**720Pa**



Sound insulation  
performance:  
**42-48dB**

## EXAMPLE PICTURE:



132  
SLIDING  
DOOR







# 202 SERIES SLIDING DOOR

ITEM NO:  
WA-202 3Tracker

SERIES:  
202 mm

SURFACE FINISH:  
Powder coating/ PVDF coating

GLASS SPECIFICATION :  
5+12A+5mm insulated tempered glass

ALU THICKNESS:  
1.6/2.0mm

HARDWARE:  
China top brand

ALUMINUM PROFILE:  
Thermal break/ Non-thermal break

BASIC PARAMETERS:



Thermal insulation coefficient:  
0.8~1.6 W/(M²·K)



Wind pressure resistance:  
6500-8500Pa WITH STEEL BEAM



Air tightness:  
LEVEL 6

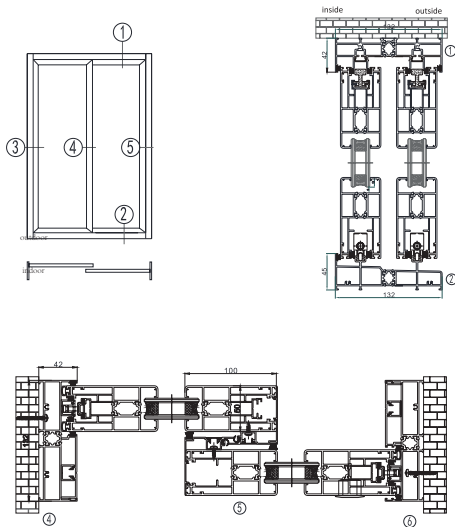
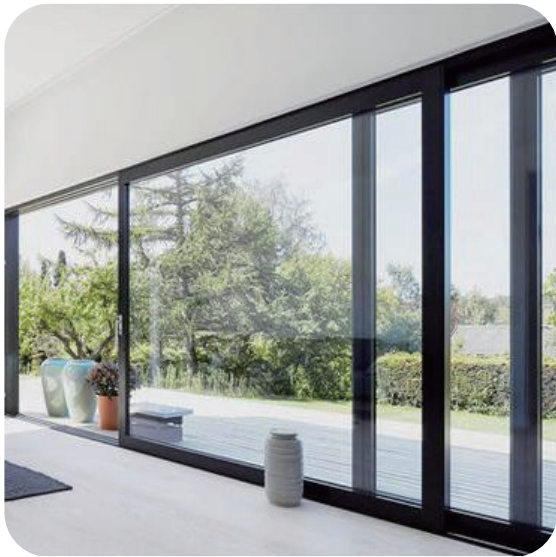


Water tightness:  
700-1000Pa



Sound insulation  
performance:  
45-50dB

EXAMPLE PICTURE:



## 202 SLIDING DOOR







# 75 SERIES BI-FOLD DOOR

ITEM NO:  
WA-75-01

SERIES:  
75 mm

SURFACE FINISH:  
Powder coating/ PVDF coating

GLASS SPECIFICATION :  
5+12A+5mm insulated tempered glass

ALU THICKNESS:  
1.6mm,1.8mm

HARDWARE:  
China top brand

ALUMINUM PROFILE:  
Thermal break/ Non-thermal break

STYLE:  
Single number Panel

## BASIC PARAMETERS:



Thermal insulation coefficient:  
UW 2.0~2.8 W/(M²·K)



Wind pressure resistance:  
2500-3500Pa



Air tightness:  
LEVEL5

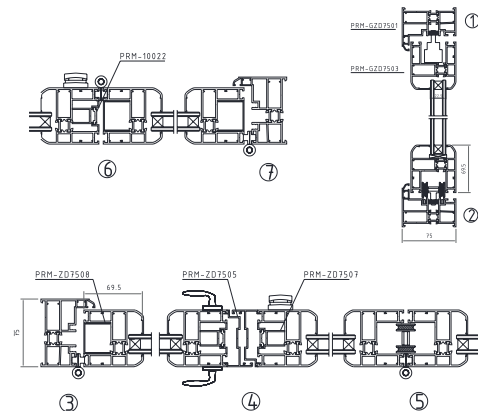


Water tightness:  
300-500Pa



Sound insulation  
performance:  
30-34dB

## EXAMPLE PICTURE:



75  
BI-FOLD  
DOOR







# 70 SERIES BI-FOLD DOOR

ITEM NO:  
WA-70-01

SERIES:  
70 mm

SURFACE FINISH:  
Powder coating/ PVDF coating

GLASS SPECIFICATION :  
5+12A+5mm insulated tempered glass

ALU THICKNESS:  
1.4mm, 1.8mm

HARDWARE:  
China top brand

ALUMINUM PROFILE:  
Thermal break/ Non-thermal break

STYLE:  
Double number Panel

## BASIC PARAMETERS:



Thermal insulation coefficient:  
UW 2.2~3.0 W/(M<sup>2</sup>·K)



Wind pressure resistance:  
2000-3000Pa



Air tightness:  
LEVEL4

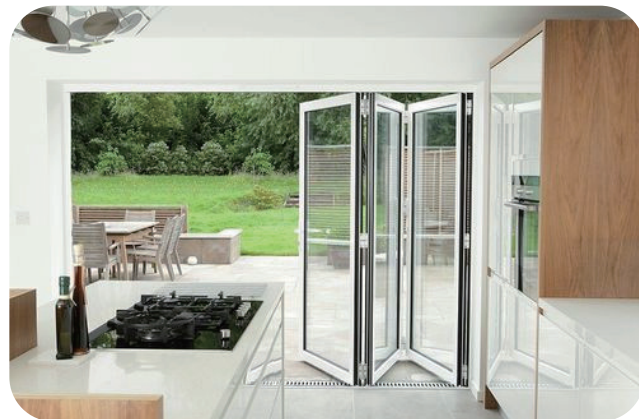


Water tightness:  
350-500Pa

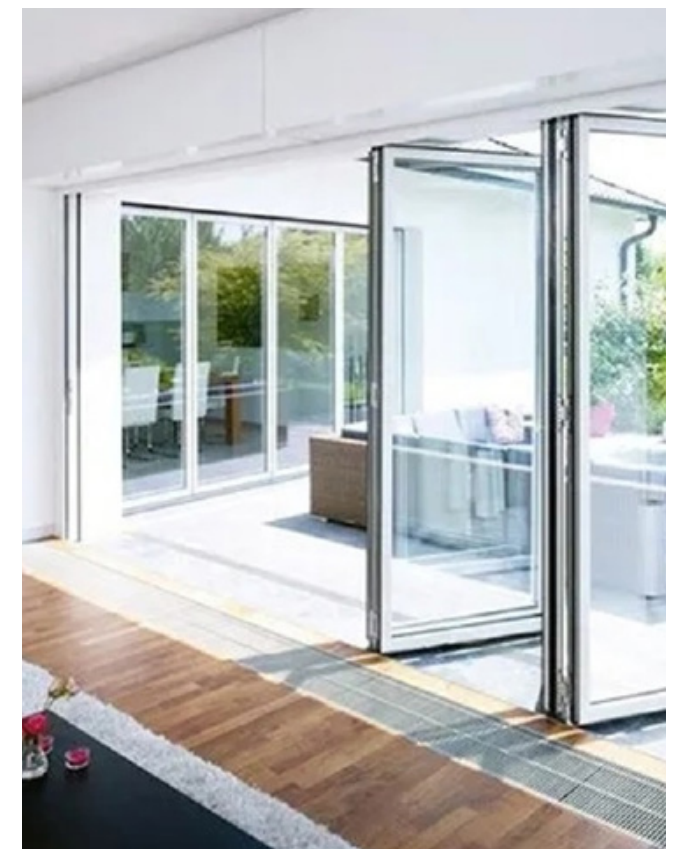


Sound insulation  
performance:  
RW 30~35dB

## EXAMPLE PICTURE:



70  
BI-FOLD  
DOOR








# 106 SERIES SLIDING & TILT-TURN WINDOW


ITEM NO:	WA-106
SERIES:	16 mm
SURFACE FINISH:	Powder coating
GLASS SPECIFICATION :	5 + 20A + 5 Double - layer Insulated Tempered Glas
LOAD - BEARING WALL THICKNESS:	1.4mm,1.6mm,1.8mm, 2.0mm
FRAME WIDTH:	106mm
FAN MATERIAL:	Glass fan 63mm, Screen fan 38mm
PROFILE MATERIAL:	6063 - T5 Silicon - Titanium - Magnesium Aluminum Alloy
HARDWARE:	OPK
SEALING STRIP:	PA66GF25 Thermal Insulation Strip, EPDM Composite Sealing Strip
OPENING METHOD:	Sliding, Tilt-Turn, Screen Swing- open

BASIC PARAMETERS:




Thermal insulation coefficient:

UW 1.8-2.7 W/(M²·K)




Wind pressure resistance:

3500-4500Pa




Air tightness:

LEVEL6



Water tightness:

500-700Pa



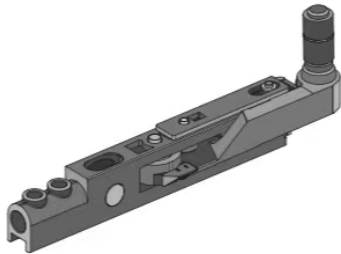
Sound insulation performance:

35-40dB

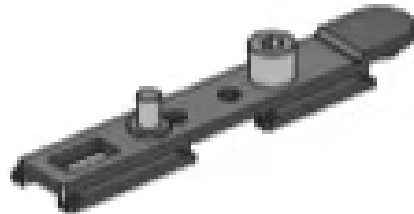
## HARDWARE CONFIGURATION



Right-opening upper pulley 1



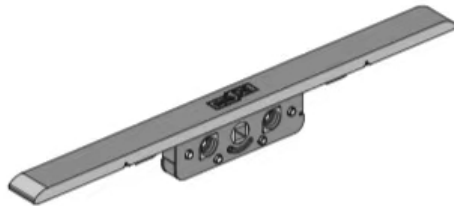
Right-opening lower pulley 1



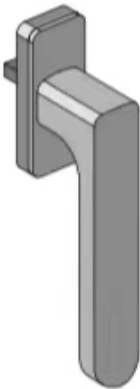
lower connector



right-opening rotating shaft  
right-angle corner brace



13 bidirectional adjustable lock box 180

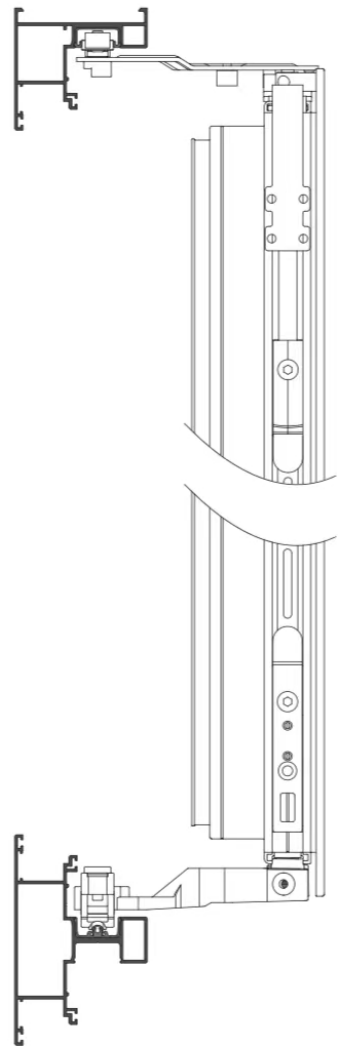


handle (short)



# 106 SERIES SLIDING & TILT-TURN WINDOW

match the track and door body



106  
SLIDING & TILT-  
TURN WINDOW







# 112 SERIES HIGH - INSULATION SYSTEM WINDOW

## ITEM NO:

WA-112High - Insulation System Window

## PROFILE SURFACE:

6063 - T5 Primary Aluminum Profile

## FILLING PROCESS AND PERFORMANCE:

Adopt Polyurethane Filling Process, with performances of sound insulation, heat insulation, thermal insulation, etc.

## GLASS SPECIFICATION :

5 + 18A + 5mm Double Glazing

## SASH FEATURES:

Seamless Welding of Window Sash, More Sealed and Aesthetic

## SEALING STRIP:

Adopt Automotive - grade Glass Seal Strip, 25 - year Warranty  
PA66 Nylon (Insulated, Flame - Retardant, Wear - Resistant, Thermal Insulation for Hollow Layer, Better Sound and Heat Insulation)

## SAFETY DESIGN:

Window Sash Corner Protection Process, Prevent Accidental Scratches

## PROFILE MATERIAL:

6063 - T5 Silicon - Titanium - Magnesium Aluminum Alloy

## CONFIGURATION:

Optional 304 Stainless Steel Mesh / High - Transparency Mesh

## BASIC PARAMETERS:



Thermal insulation coefficient:  
**UW 1.5-2.0 W/(M²·K)**



Wind pressure resistance:  
**4500-6000Pa**



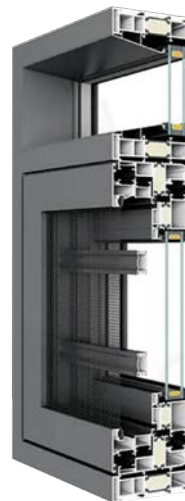
Air tightness:  
**LEVEL7**



Water tightness:  
**700-900Pa**

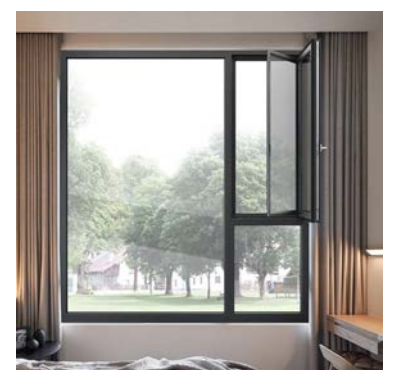


Sound insulation  
performance:  
**38-42dB**



112

## EXAMPLE PICTURE





**ITEM NO:**

WA-112Tilt-Turn Window, Seamless Welding Series

**PROFILE SURFACE:**

2.0mm thickness, 6063 - T5 Aluminum Profile

**FILLING PROCESS AND PERFORMANCE:**

Adopt polyurethane filling process, with sound insulation, heat insulation, thermal insulation and other performances

**GLASS SPECIFICATION :**

5 + 25A + 5

**SASH FEATURES:**

Seamless welding of window sash, more sealed and beautiful

**SEALING STRIP:**

Adopt Automotive - grade Glass Seal Strip, 25 - year Warranty  
PA66 Nylon (Hollow heat insulation, flame retardant, wear - resistant, heat insulation and thermal insulation, better sound and heat insulation)

**SAFETY DESIGN:**

Window Sash Corner Protection Process, Prevent Accidental Scratches

**CONFIGURATION:**

Optional 304 Stainless Steel Mesh / High - Transparency Mesh

**BASIC PARAMETERS:**

Thermal insulation coefficient:  
**UW 1.5-2.0 W/(M²·K)**



Wind pressure resistance:  
**4500-6000Pa**



Air tightness:  
**LEVEL7**



Water tightness:  
**700-900Pa**



Sound insulation  
performance:  
**38-42dB**



## PRODUCT DETAILS







# 120 SERIES FULL SEAMLESS WELDING WINDOW

## ITEM NO:

WA-120 Full Seamless Welding

## PROFILE SURFACE:

2.0mm Thickness 6063 - T5 Aluminum Profile

## FILLING PROCESS AND PERFORMANCE:

Adopt polyurethane filling process, with sound insulation, heat insulation, thermal insulation and other performances

## GLASS SPECIFICATION :

5 + 25A + 5mm, Double Glazing

## SASH FEATURES:

Seamless welding of window sash, more sealed and beautiful

## SEALING STRIP:

Adopt Automotive - grade Glass sealant Strip, 25 - year Warranty  
PA66 Nylon (Hollow heat insulation, flame retardant, wear - resistant, heat insulation and thermal insulation, better sound and heat insulation)

## SAFETY DESIGN:

Window Sash Corner Protection Process, Prevent Accidental Scratches

## CONFIGURATION:

Optional 304 Stainless steel Mesh / High - Transparency Mesh

## BASIC PARAMETERS:



Thermal insulation coefficient:  
**UW 0.8-1.8 W/(M²·K)**



Wind pressure resistance:  
**4500-6000Pa**



Air tightness:  
**LEVEL7**

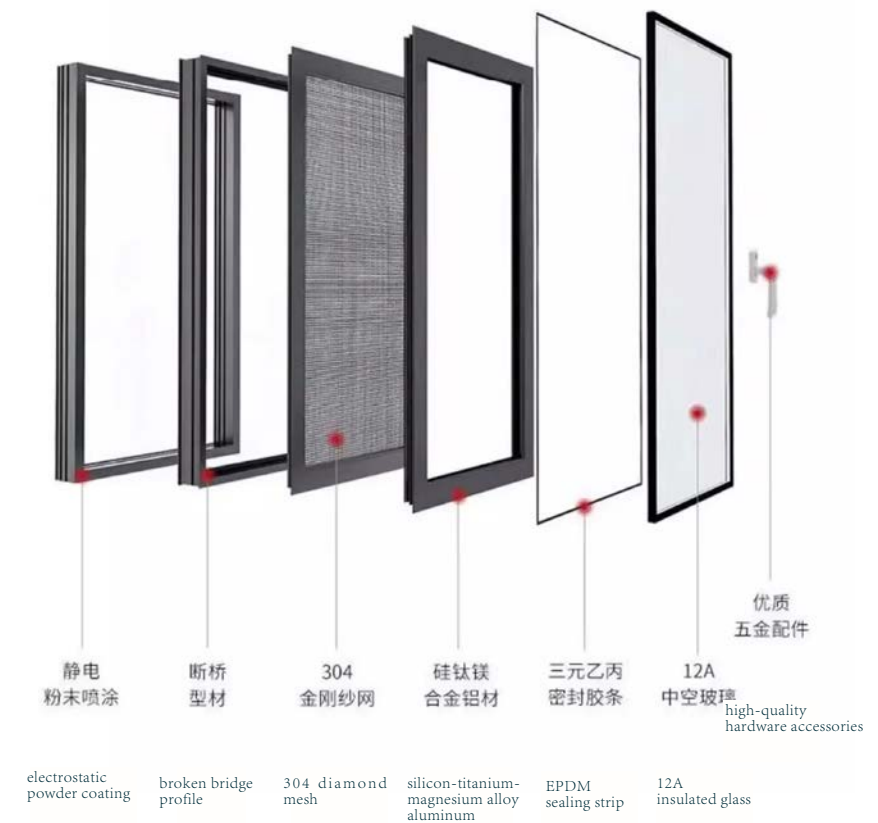


Water tightness:  
**700-900Pa**



Sound insulation  
performance:  
**700-900Pa**

# FULL SEAMLESS WELDING WINDOW





SIMPLE HOME LIFE

A clean and stylish aesthetic, achieved through textured materials and refined craftsmanship, fulfills the pursuit of high-quality living. The palette is elegant, fresh, and vibrant, blending leisure and luxury to create a bold sense of design.



SOUNDPROOFING SYSTEM

Crafting tranquil living spaces for undisturbed, restorative sleep night after night.

Super sound insulation up to  
**50dB**







# 126 SERIES MINIMALIST SILENT DOORS AND WINDOWS

**ITEM NO:**  
WA-126 Minimalist Silent Doors and Windows

**PROFILE SURFACE:**  
6063 - T5 Primary Aluminum Profile, Powder coating/PVDF

**FILLING PROCESS AND PERFORMANCE:**  
Adopt polyurethane filling process, with sound insulation, heat insulation, thermal insulation and other performances

**GLASS SPECIFICATION :**  
5 + 25A + 5mm

**SASH FEATURES:**  
Screen Window Uses 304 Material High - Elasticity and High - Transparency Mesh (Clear View, Better Ventilation Effect)

**SEALING STRIP:**  
Adopts Frame - Sash Flush Design, Indoor and Outdoor Adopt Glue - Free Process, Not Easy to Shift During Resonance, Adopts Floor Drain - Type Side Drainage Design to Use Water Pressure for Drainage, Smooth Drainage and Good Appearance

**SAFETY DESIGN:**  
Window Sash Corner Protection Process, Prevent Accidental Scratches

**CONFIGURATION:**  
Product Configuration: 2.0mm/4.0mm, Visible Screen Surface: 47mm

## BASIC PARAMETERS:



Thermal insulation coefficient:  
**UW 0.5-1.5 W/(M²·K)**



Wind pressure resistance:  
**5000-7000Pa**



Air tightness:  
**LEVEL 8**



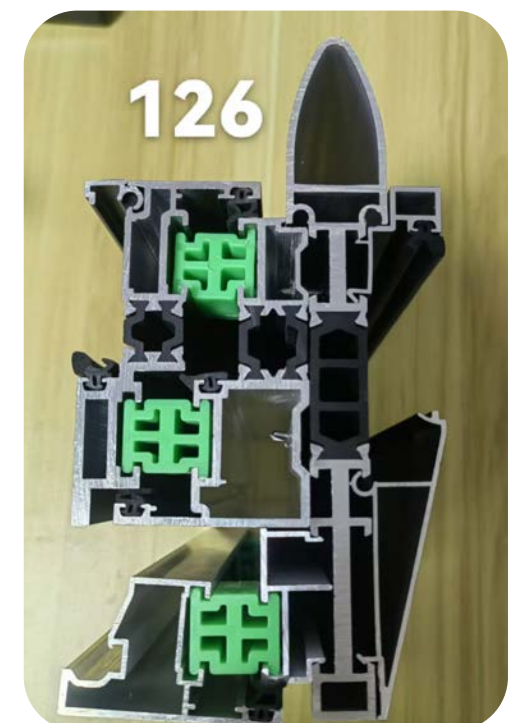
Water tightness:  
**800-1000Pa**



Sound insulation performance:  
**RW 42-48dB**



# 126 SERIES MINIMALIST SILENT DOORS AND WINDOWS





# 150 SERIES

## PANORAMIC FULL - HIDDEN DOOR

### ITEM NO:

WA-150 Panoramic Full - Hidden Door

### PRODUCT FEATURES:

The profile surface is 6063 - T5 primary aluminum profile  
Upper anti - swing wheel, lower stainless steel track, train wheel double - sliding design

### PROFILE WALL THICKNESS:

10.0mm

### GLASS SPECIFICATION :

5mm + 27A + 5mm

### WALL - OCCUPYING WIDTH:

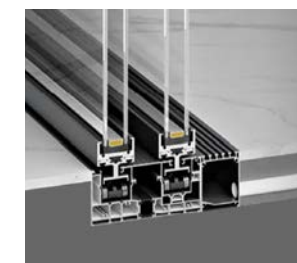
Upper rail 150mm / Light sash 50mm

### VISIBLE SURFACE WIDTH:

Upper rail 70mm / Light sash 25mm / Hook sash 25mm



## PRODUCT DETAILS



### ITEM NO:

WA-150 Panoramic Full - Hidden Door

### PRODUCT FEATURES:

The profile surface is 6063 - T5 aluminum profile  
-Upper anti - swing wheel, lower stainless steel track, train wheel double - sliding design

### PROFILE WALL THICKNESS:

10.0mm

### GLASS SPECIFICATION :

5mm + 27A + 5mm

### WALL - OCCUPYING WIDTH:

Upper rail 150mm / Light sash 50mm

### VISIBLE SURFACE WIDTH:

Upper rail 70mm / Light sash 48mm / Hook sash 25mm



### ITEM NO:

WA-150 Panoramic Door - With Lock and Handle

### PRODUCT FEATURES:

The profile surface is 6063 - T5 aluminum profile  
Upper anti - swing wheel, lower stainless steel track, train wheel double - sliding design

### PROFILE WALL THICKNESS:

10.0mm

### GLASS SPECIFICATION :

5mm + 27A + 5mm

### WALL - OCCUPYING WIDTH:

Upper rail 150mm / Light sash 50mm





ITEM NO:  
WA-16-01

SERIES:  
16 mm

SURFACE FINISH:  
Powder coating

GLASS SPECIFICATION :  
8mm single glass/ 5+6A+5mm / 5+6A / 9A+5mm insulated tempered glass/  
4+0.76pvb+4mm laminated glass

ALU THICKNESS:  
2.0mm

HARDWARE:  
China top brand

## BASIC PARAMETERS:



Thermal insulation coefficient:  
**UW 3.0~5.0 W/(M²·K)**



Wind pressure resistance:  
**1500-2000Pa**



Air tightness:  
**LEVEL3~4**



Water tightness:  
 **$250 \leq \Delta P < 350$  Pa**

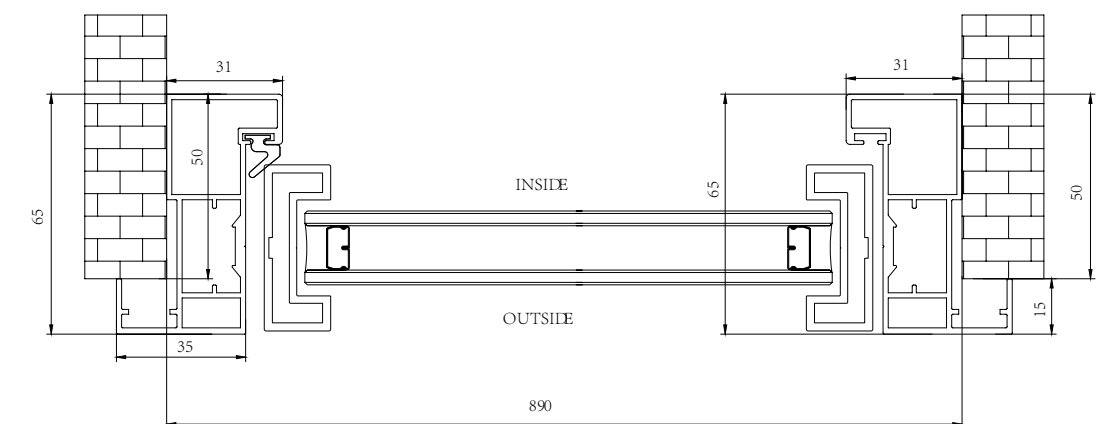
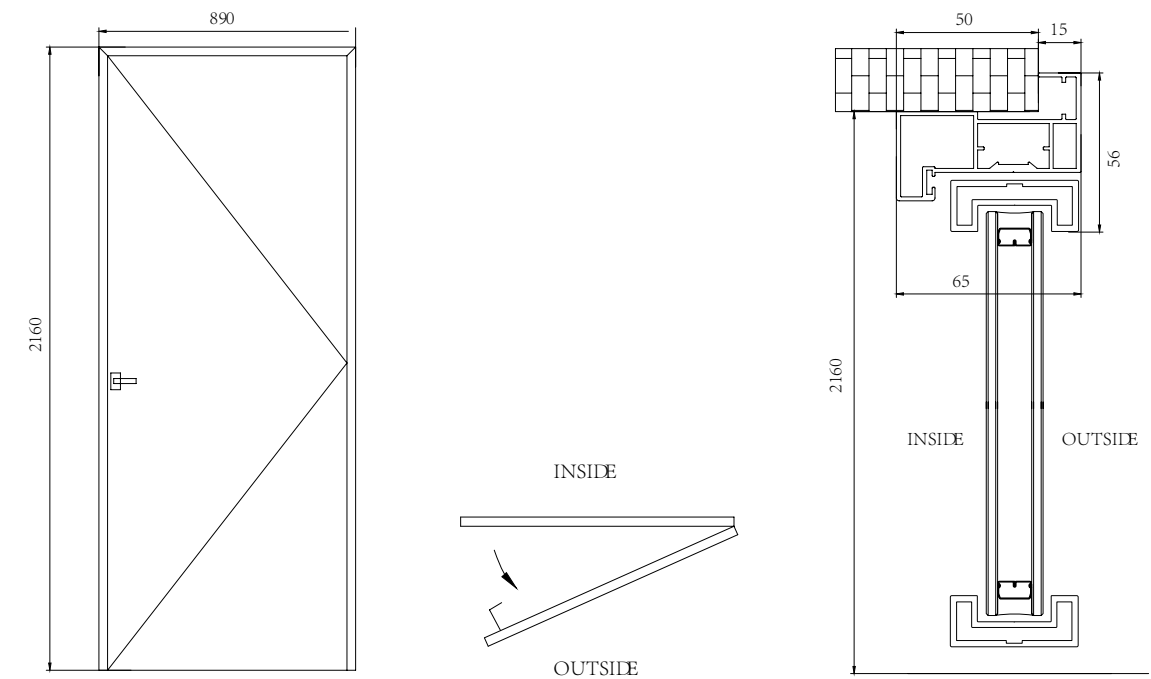


Sound insulation  
performance:  
**30~33dB**

## EXAMPLE PICTURE:



# 16 SERIES SLIM SLIDING DOOR







## 16 SERIES SLIM CASEMENT DOOR

ITEM NO:  
WA-16-05

**SERIES:**  
16 mm

**SURFACE FINISH:**  
Powder coating

**GLASS SPECIFICATION :**

8mm single glass/ 5+6A+5mm / 5+6A / 9A+5mm insulated tempered glass/  
4+0.76pvb+4mm laminated glass

**ALU THICKNESS:**  
2.0mm

**HARDWARE:**  
China top brand

### BASIC PARAMETERS:



Thermal insulation coefficient:  
**UW 3.0~5.0 W/(M<sup>2</sup>·K)**



Wind pressure resistance:  
**1800~2500Pa**



Air tightness:  
**LEVEL4**

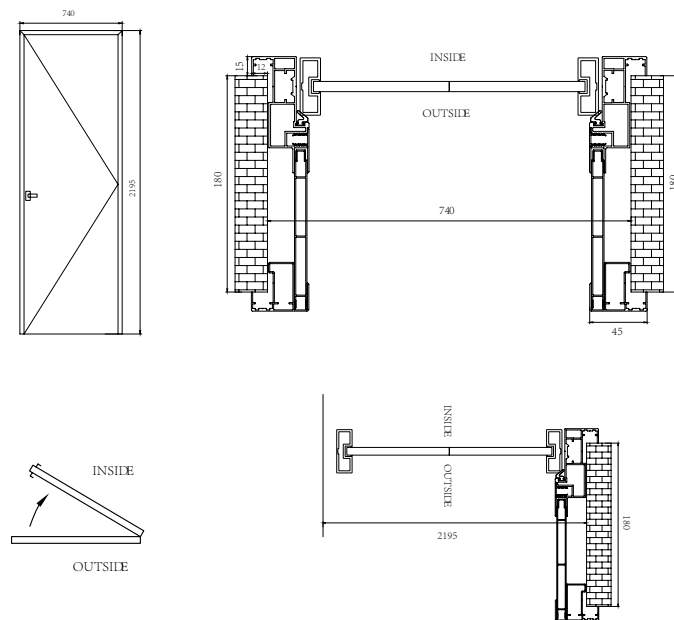


Water tightness:  
 **$250 \leq \Delta P < 350 \text{ Pa}$**



Sound insulation performance:  
**30~33dB**

**EXAMPLE PICTURE:**



# 16

## SLIM CASEMENT DOOR







# 18 SERIES SLIM FRAME ALUMINUM CASEMENT DOOR

ITEM NO:  
WA-16-01

SERIES:  
16 mm

SURFACE FINISH:  
Powder coating

GLASS SPECIFICATION :  
8mm single glass/ 5+6A+5mm / 5+6A / 9A+5mm insulated tempered glass/  
4+0.76pvb+4mm laminated glass

ALU THICKNESS:  
2.0mm

HARDWARE:  
China top brand

## BASIC PARAMETERS:



Thermal insulation coefficient:  
UW 3.0~5.0 W/(M²·K)



Wind pressure resistance:  
2000~2500Pa



Air tightness:  
LEVEL4~5

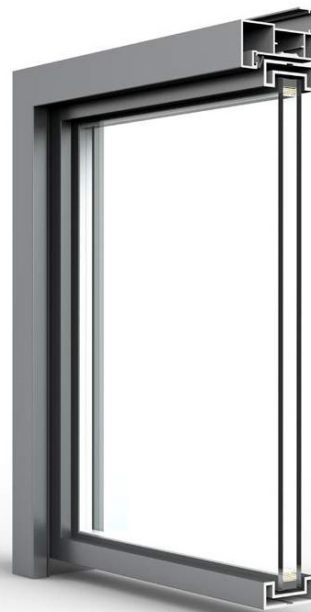


Water tightness:  
 $250 \leq \Delta P < 350$  Pa

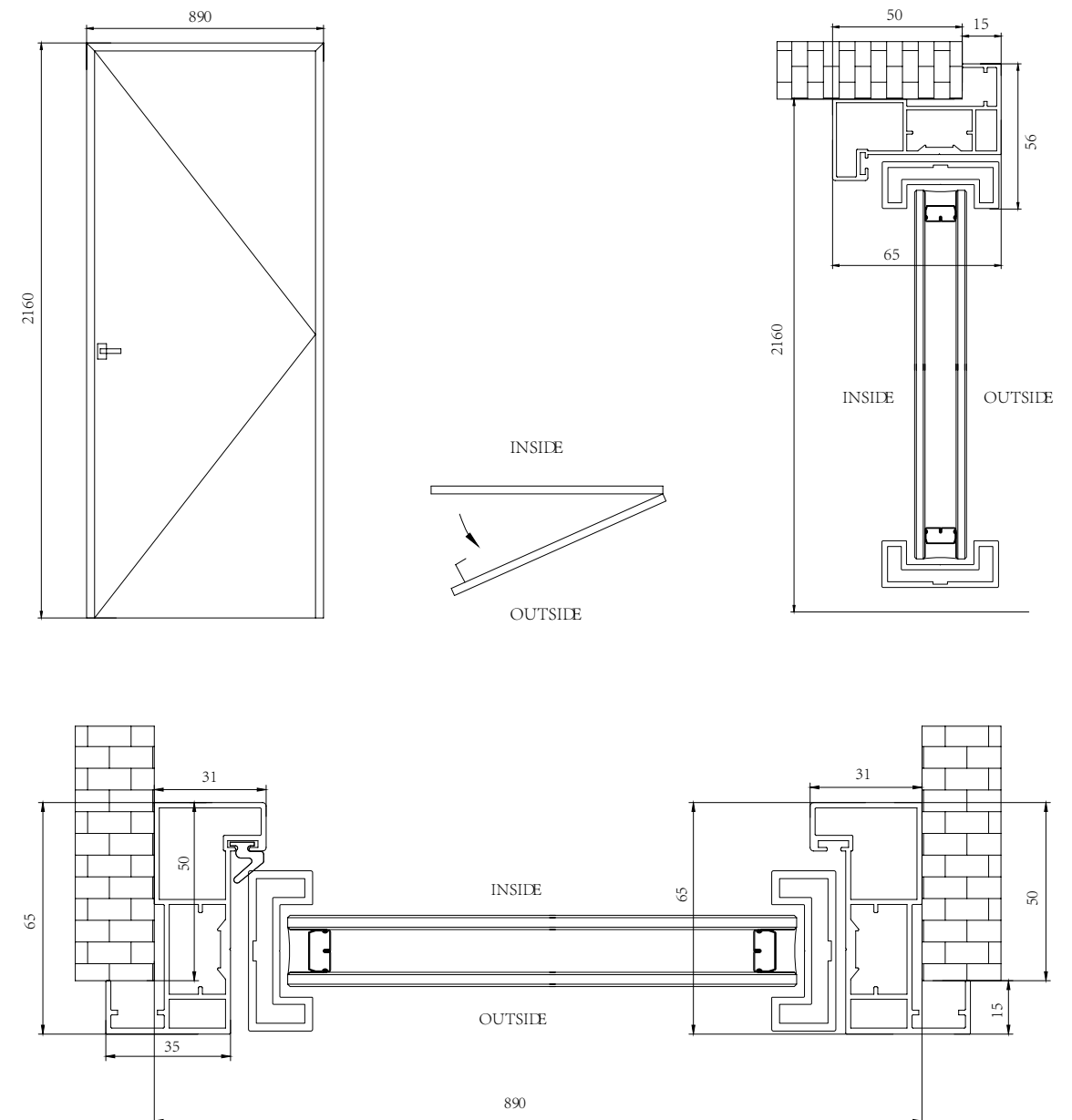


Sound insulation  
performance:  
30~33dB

## EXAMPLE PICTURE:



# 18 SERIES SLIM FRAME ALUMINUM CASEMENT DOOR





ITEM NO:  
WA-16-05

SERIES:  
16 mm

SURFACE FINISH:  
Powder coating

GLASS SPECIFICATION :  
8mm single glass/ 5+6A+5mm / 5+6A / 9A+5mm insulated tempered glass/  
4+0.76pvb+4mm laminated glass

ALU THICKNESS:  
2.0mm

HARDWARE:  
China top brand

#### BASIC PARAMETERS:



Thermal insulation coefficient:  
**UW 3.0~5.0 W/(M²·K)**



Wind pressure resistance:  
**2000~2500Pa**



Air tightness:  
**LEVEL4**

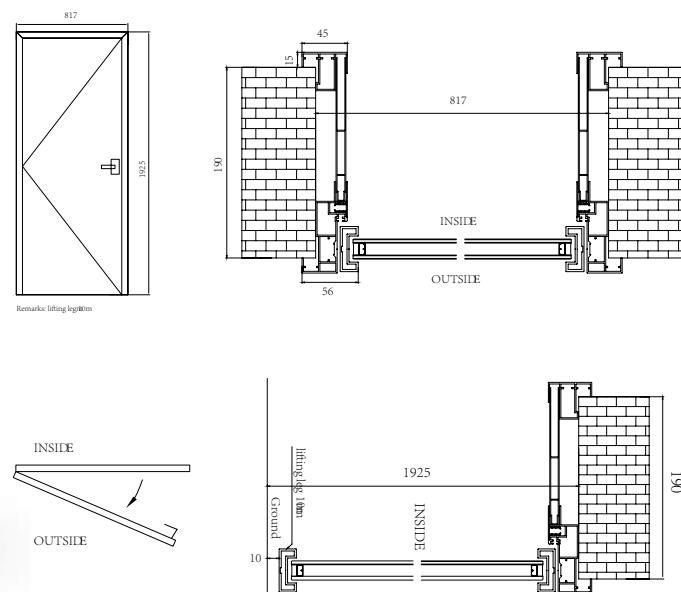


Water tightness:  
 **$250 \leq \Delta P < 350$  Pa**



Sound insulation  
performance:  
**30~33dB**

#### EXAMPLE PICTURE:







ULTRAL SLIM ALUMINUM PIVOT DOOR

ITEM NO:  
WA-UTS1628PV

PROFILE SURFACE:  
6063 - T5 Primary Aluminum Profile, Powder coating/PVDF

PROFILE THICKNESS:  
2.0mm, 3.0mm


GLASS SPECIFICATION :  
5+9A+5mm,5+12A+5mm


FILLING PROCESS AND PERFORMANCE:  
Adopt polyurethane filling process, with sound insulation, heat insulation

SEALING STRIP:  
Adopts Frame - Sash Flush Design, Indoor and Outdoor Adopt Glue


MAX SIZE:  
Max width=1200mm, Max high=2600mm


BASIC PARAMETERS:

 Thermal insulation coefficient:  
UW 3.7~5.5 W/(M²·K)

 Wind pressure resistance:  
≤1500Pa

 Air tightness:  
LEVEL3

 Water tightness:  
300Pa

 Sound insulation  
performance:  
25-30dB

EXAMPLE PICTURE:



ULTRAL SLIM ALUMINUM PIVOT DOOR



HIGH HARDNESS

SHOCK RESISTANCE

CORROSION RESISTANCE

STRONG WATERPROOF





# ULTRA SLIM GLASS BI-FOLD DOOR

ITEM NO:  
WA-UTS1628BF

PROFILE SURFACE:  
6063 - T5 Primary Aluminum Profile, Powder coating/PVDF

PROFILE THICKNESS:  
2.0mm, 3.0mm, 10 mm

GLASS SPECIFICATION :  
5+9A+5mm,5+12A+5mm

FILLING PROCESS AND PERFORMANCE:  
Adopt polyurethane filling process, with sound insulation, heat insulation

SEALING STRIP:  
Adopts Frame - Sash Flush Design, Indoor and Outdoor Adopt Glue

MAX SIZE:  
Max width=1200mm, Max high=2600mm

BASIC PARAMETERS:



Thermal insulation coefficient:  
UW 3.5~5.5 W/(M²·K)



Wind pressure resistance:  
1500PA-3500Pa



Air tightness:  
LEVEL3

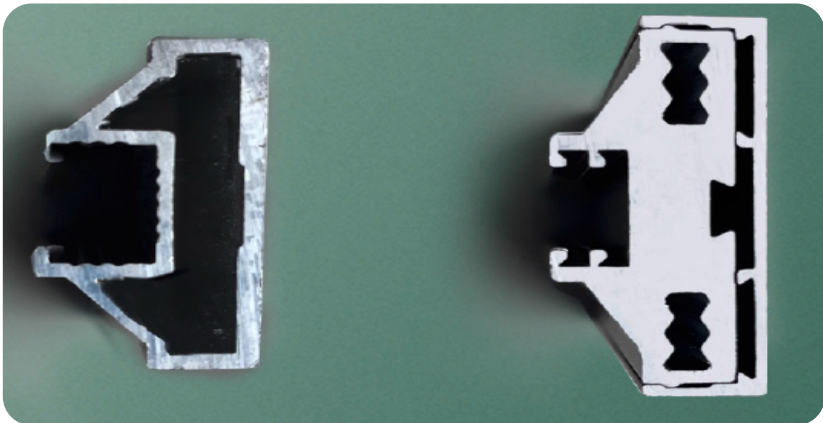


Water tightness:  
300Pa



Sound insulation performance:  
25-30dB

PRODUCT DETAILS:



ULTRA SLIM  
GLASS BI-  
FOLD DOOR







# ULTRA SLIM ALUMINUM SLIDING DOOR/BARN DOOR

ITEM NO:  
WA-UTS1628SD

PROFILE SURFACE:  
6063 - T5 Primary Aluminum Profile, Powder coating/PVDF

PROFILE THICKNESS:  
2.0mm, 3.0mm, 10 mm


GLASS SPECIFICATION :  
5+9A+5mm,5+12A+5mm

FILLING PROCESS AND PERFORMANCE:  
Adopt polyurethane filling process, with sound insulation, heat insulation


SEALING STRIP:  
Adopts Frame - Sash Flush Design, Indoor and Outdoor Adopt Glue

MAX SIZE:  
Max width=1200mm, Max high=2600mm


BASIC PARAMETERS:




Thermal insulation coefficient:  
**UW 3.5~5.5 W/(M²·K)**




Wind pressure resistance:  
**1500PA-3500Pa**



Air tightness:  
**LEVEL3**

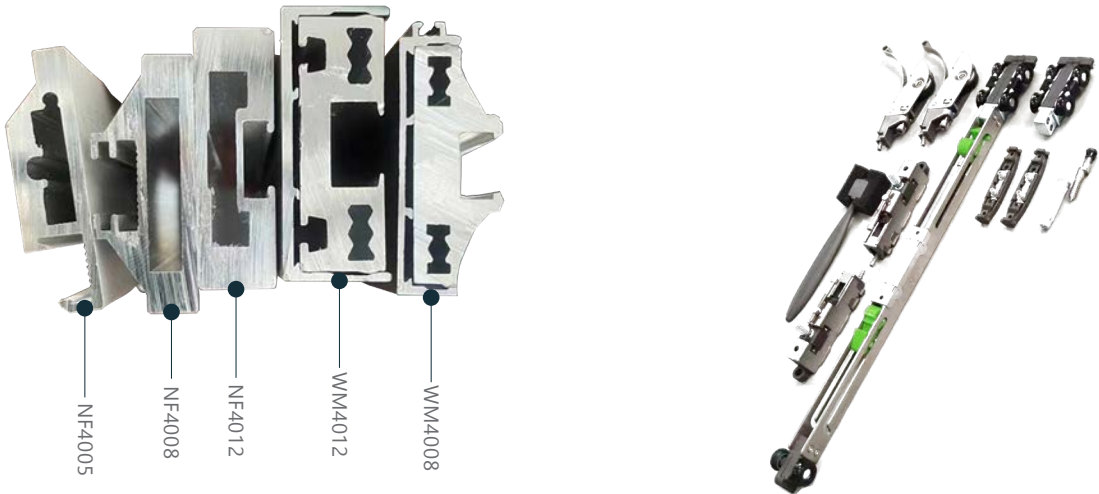


Water tightness:  
**300Pa**



Sound insulation performance:  
**25-30dB**

PRODUCT DETAILS:



ULTRA SLIM  
ALUMINUM  
SLIDING DOOR  
BARN DOOR





ITEM NO:  
WA-FL65

PROFILE SURFACE:  
6063 - T5 Primary Aluminum Profile, Powder coating/PVDF

PROFILE THICKNESS:  
110 / 36 / 20mm

GLASS SPECIFICATION :  
12mm, 5+1.14+5mm, tempered safty glass

TYPE:  
Frameless

OPEN:  
Bi-fold

MAX SIZE:  
Max width=1200mm, Max high=2600mm

## BASIC PARAMETERS:



Thermal insulation coefficient:  
UW 3.5~4.5 W/(M²·K)



Wind pressure resistance:  
1500Pa



Air tightness:  
LEVEL2

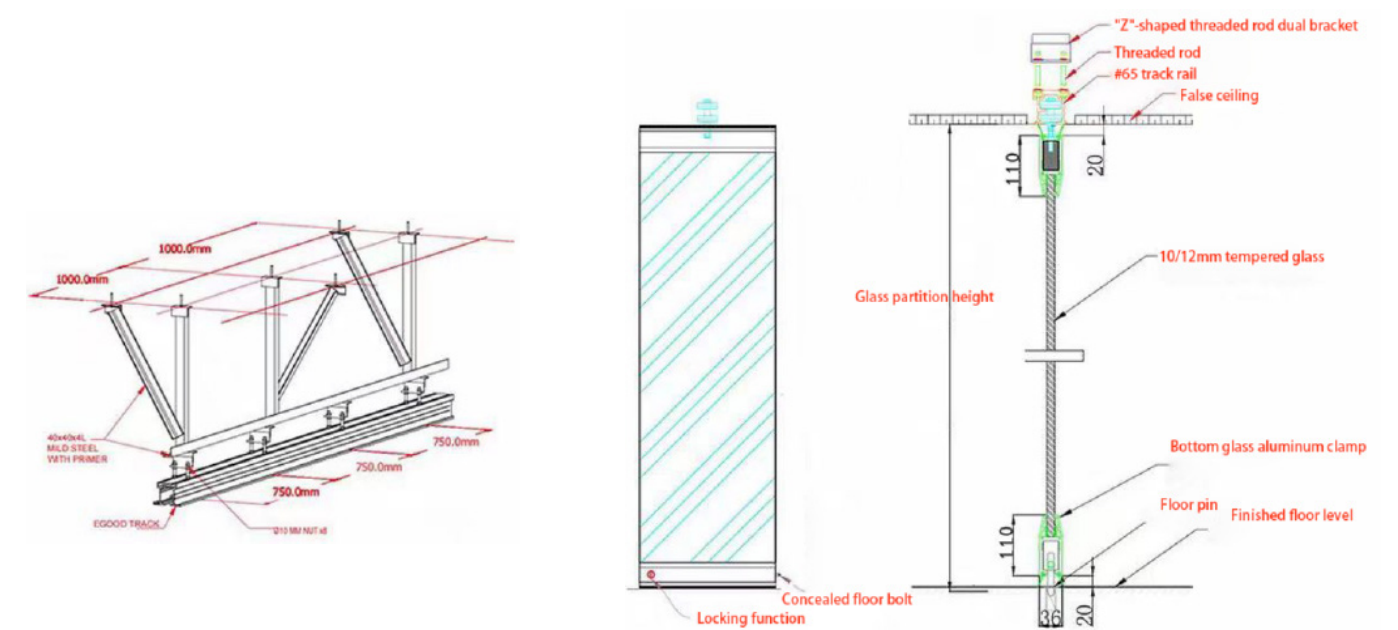
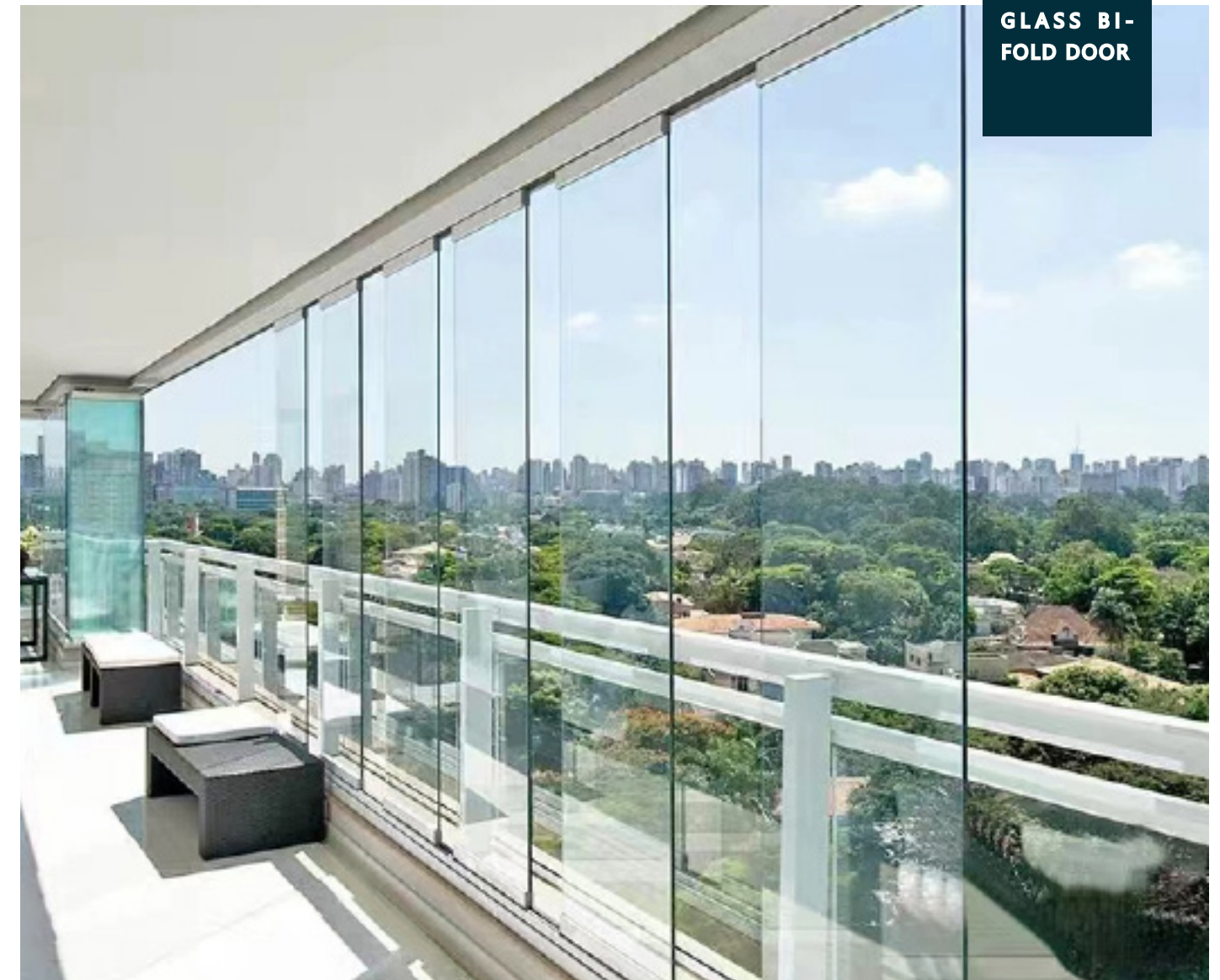


Water tightness:  
150Pa



Sound insulation  
performance:  
25-30dB

## EXAMPLE PICTURE:





## ITEM NO:

WA-ACW

## SURFACE FINISH:

Powder coating/ PVDF coating

## GLASS SPECIFICATION :

Customized glass thickness

## ALU THICKNESS:

Customized

## APPLICATION:

Commercial Buildings

## BASIC PARAMETERS:



Thermal insulation coefficient:  
**UW 1.8~2.5 W/(M²·K)**



Wind pressure resistance:  
**6000-8000Pa**



Air tightness:  
**LEVEL5**

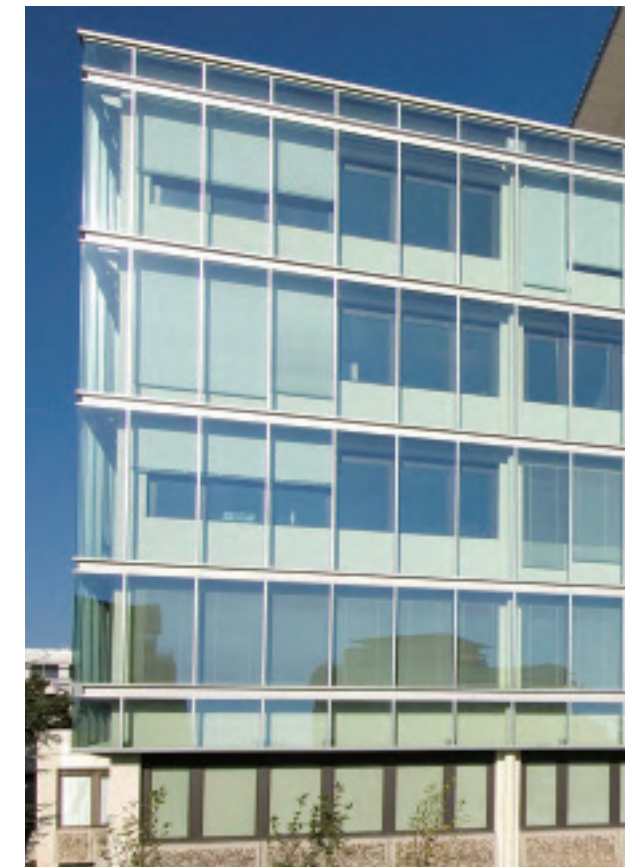
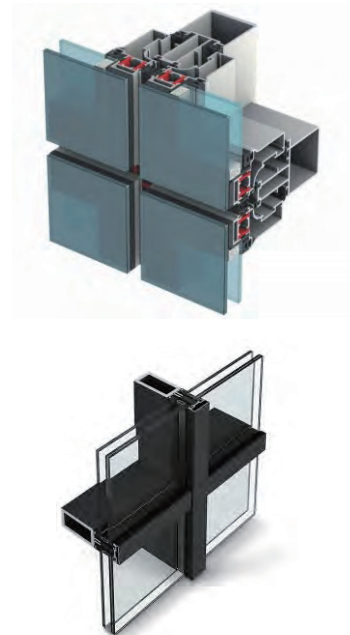


Water tightness:  
**900-1200Pa**



Sound insulation  
performance:  
**35-40dB**

## EXAMPLE PICTURE:





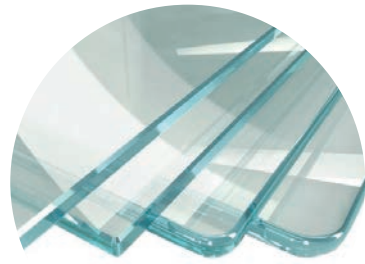
All glasses for window and door are tempered safety glass.

Single glass is suitable for interior and areas where temperature difference is small, it's widely used with affordable price

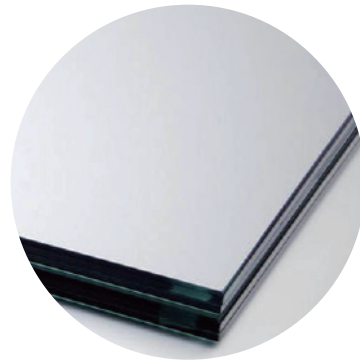
Insulated glass has better heat and sound insulation effect.

Laminated glass is the safest safe glass among all glass types.

Our professional sales manager will suggest the suitable glass type according to your situation.



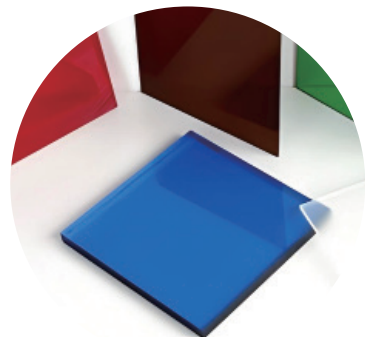
TEMPERED GLASS



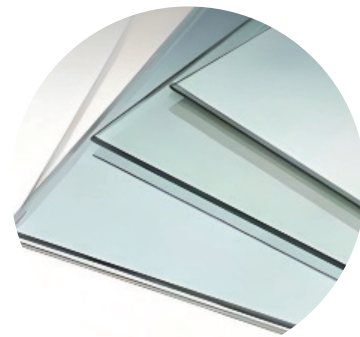
SINGLE GLASS



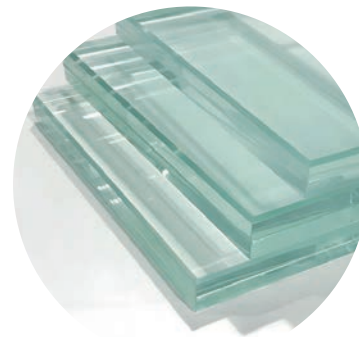
DOUBLE GLASS



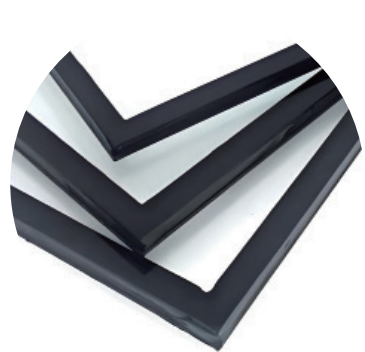
TINTED GLASS



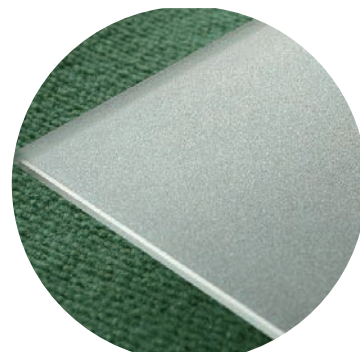
REFLECTIVE GLASS



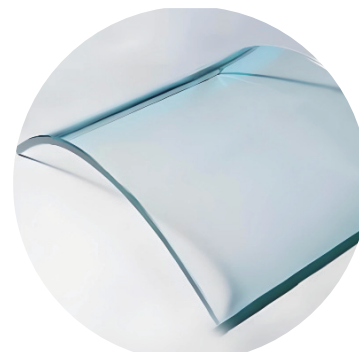
LAMINATED GLASS



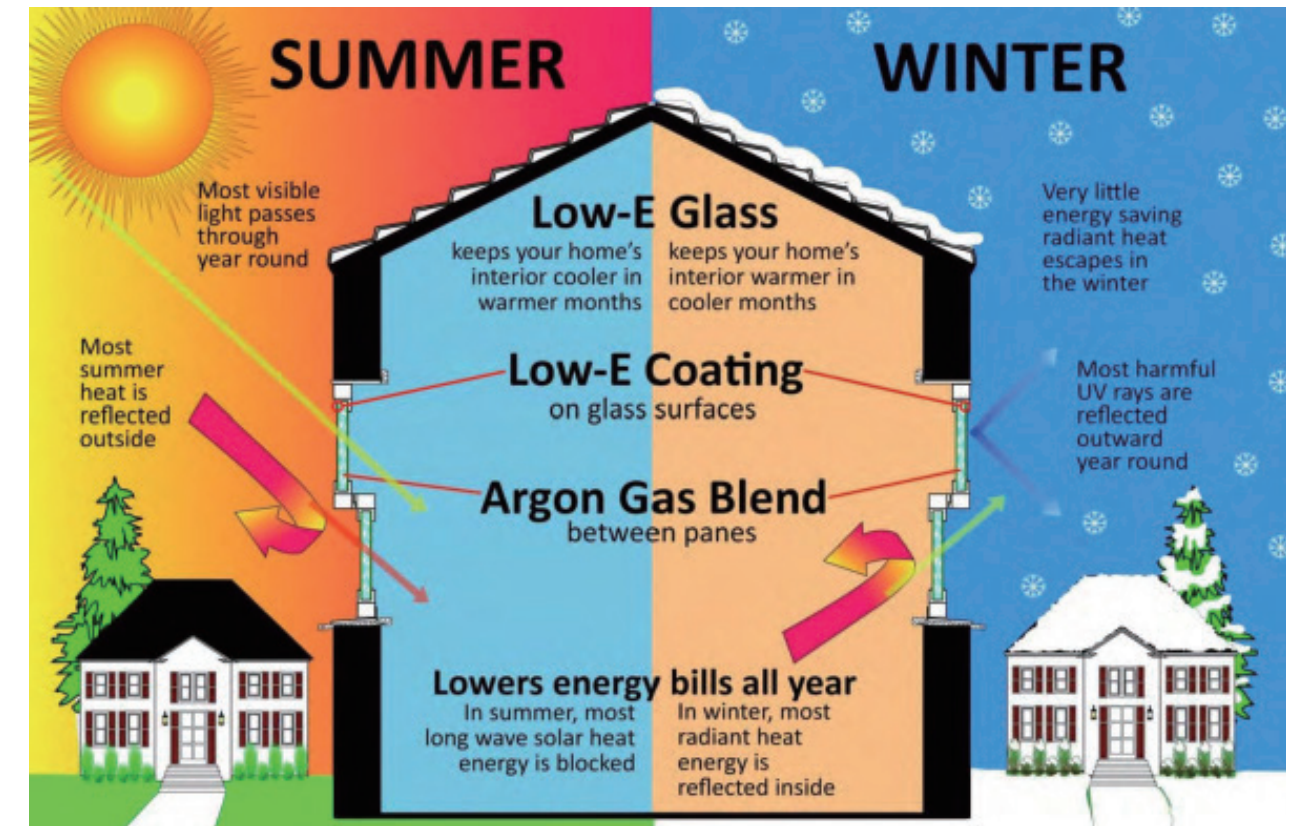
LOW-E GLASS



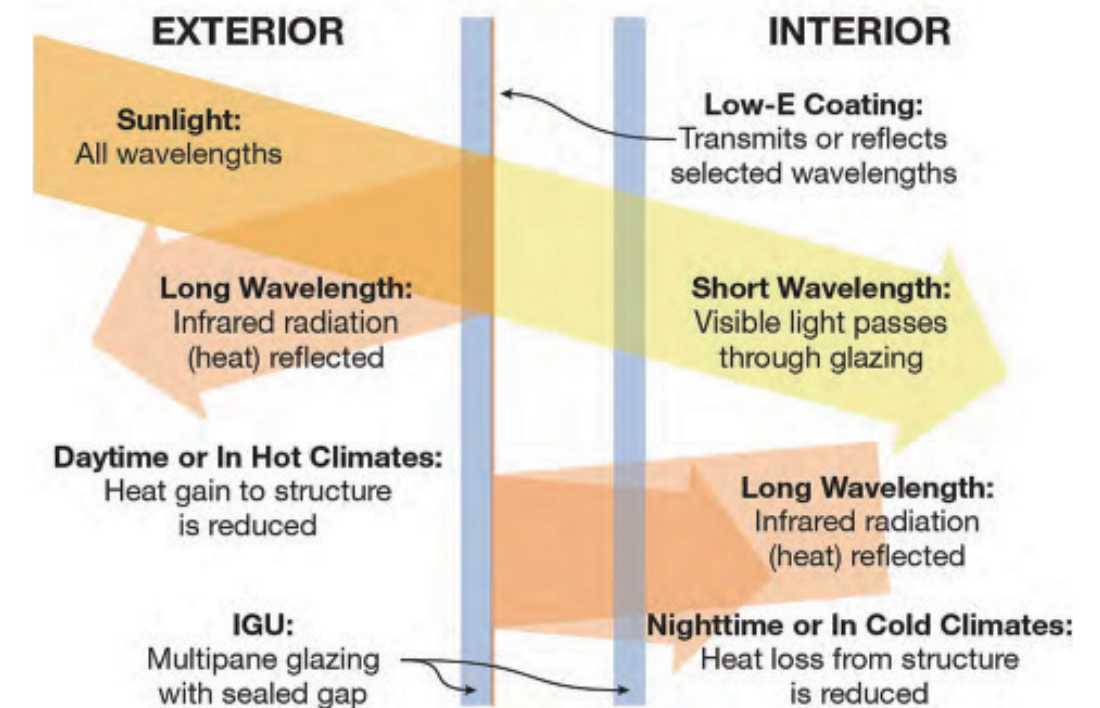
FROSTED GLASS



ARC GLASS



## Low-E Coating Performance







QUADRUPLE  
TRIPLE  
DOUBLE



FOR SPECIAL PROFILE



FOR NORMAL PROFILE



THERMAL BREAK PROFILE



NON-THERMAL BREAK PROFILE



WOODEN PROFILE

GLASS PERFORMANCE DATA

Model	Glass type	Visible light (%)			USA ASHRAE				
		Transmittance	Reflectivity		U-value (winter) (w/m2.k)	U-value (winter) (w/m2.k)	Shading factor	G	G-value relative heating (w/m2.k)
			Inside	Outside					
XETN180	5XETN180#2+6A+5C	73	10	11	2.50	2.54	0.67	0.59	445
	6XETN180#2+9A+6C	72	10	11	2.04	2.11	0.65	0.57	427
	6XETN180#2+12A+6C	72	10	11	1.85	1.85	0.65	0.56	424
	8XETN180#2+12A+8C	71	10	11	1.83	1.84	0.64	0.55	416
	10XETN180#2+12A+10C	69	10	11	1.82	1.83	0.61	0.53	399
XETS140	5XETS140#2+6A+5C	36	29	9	2.47	2.50	0.37	0.32	249
	6XETS140#2+9A+6C	36	29	9	2.00	2.06	0.35	0.30	235
	6XETS140#2+12A+6C	36	29	9	1.80	1.80	0.34	0.30	229
	8XETS140#2+12A+8C	35	29	9	1.78	1.78	0.34	0.29	226
	10XETS140#2+12A+10C	34	28	9	1.77	1.77	0.33	0.28	220
XETS150	5XETS150#2+6A+5C	45	29	12	2.44	2.47	0.41	0.36	280
	6XETS150#2+9A+6C	44	29	12	1.97	2.02	0.40	0.34	266
	6XETS150#2+12A+6C	44	29	12	1.76	1.75	0.39	0.34	260
	8XETS150#2+12A+8C	44	28	12	1.75	1.74	0.39	0.33	256
	10XETS150#2+12A+10C	43	28	12	1.74	1.72	0.37	0.32	249
XETS160	5XETS160#2+6A+5C	54	22	10	2.47	2.50	0.47	0.41	318
	6XETS160#2+9A+6C	53	22	10	2.00	2.06	0.45	0.39	303
	6XETS160#2+12A+6C	53	22	10	1.80	1.80	0.45	0.39	298
	8XETS160#2+12A+8C	52	22	10	1.79	1.78	0.44	0.38	293
	10XETS160#2+12A+10C	51	21	10	1.77	1.77	0.43	0.37	284
XETG150	5XETG150#2+6A+5C	45	22	9	2.48	2.51	0.43	0.38	293
	6XETG150#2+9A+6C	44	22	8	2.02	2.08	0.41	0.36	277
<b>Illustration:</b> 1. The data in the sheet are calculated by Windows 5.2 provided by LNBL laboratory according to the international standard ISO9050-2003 and the domestic industry standard JGJ/T 151-2008 external conditions. The solar spectrum range: 300~2500nm;Visible light range: 380-780nm;Winter night: outdoor temperature -20°C, indoor temperature 20°C;Daytime in summer: the outdoor temperature is 30°C, and the indoor temperature is 25°C;Wind speed 2.8m/s;The solar density is 500w/m². 2. The above data are calculated values measured on samples.									





TEAK WOOD GRIAN YH-MYT-14151



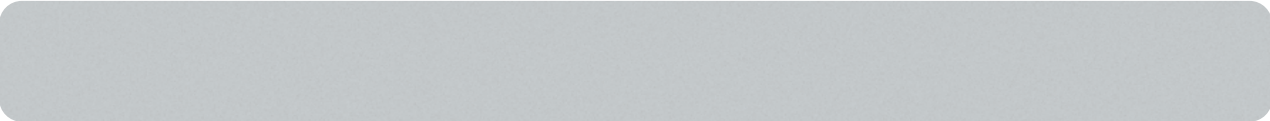
TEAK WOOD GRIAN YH-MYT-14151



TEAK WOOD GRIAN YH-MYT-14151



TEAK WOOD GRIAN YH-MYT-14151



TEAK WOOD GRIAN YH-MYT-14151



TEAK WOOD GRIAN YH-MYT-14151



TEAK WOOD GRIAN YH-MYT-14151



SMOOTH WHITE YH-MYT-14516



SMOOTH WHITE YH-MYT-14516



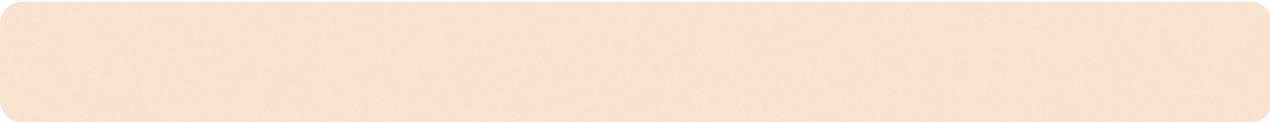
SMOOTH WHITE YH-MYT-14516



SMOOTH WHITE YH-MYT-14516



SMOOTH WHITE YH-MYT-14516



SMOOTH WHITE YH-MYT-14516



SMOOTH WHITE YH-MYT-14516





Casement window  
& Owing window  
& Turn and tilt  
window handle



Casement window  
hinges



Turn and tilt  
window hinges  
accessories



Sliding window  
lock



Sliding window  
pulley



Transmission box



Sliding door  
heavy duty pulley



Sliding door  
handle



Sliding door  
lock



Sliding door  
pulley



Bi-fold door hinge  
with handle



Bi-fold door  
hinge



Bi-fold door  
pulley



Bi-fold door  
handle



Casemnet door  
lock cylinder



Casement door  
hinge



Casement door  
handle



Casement door  
lock



Casement door  
electronic lock

SCILIA



Handle



Lock



Casement door  
accessories



Casement door  
handle

NOTO



Hinge



Turn and tilt window  
accessories



Handle



Transmission  
box



Casement door  
accessories

GERMAN HOBOHOPO



Handle



Casement door  
handle



